

# Significant Part Number Matrix Rev.00

ST = Stackable Tote  
 LP = Low Profile  
 WO = Water Only  
 IB = Inductor Blow Mold  
 PM = PCO w/ Sump  
 PC = PCO w/o Sump  
 CM = Crop Care Box Sump  
 CC = Crop Care Std. Sump  
 HE=Elliptical  
 SB=Spot Spray blow mold  
 SF=Spot Spray no sump foam  
 SD=Spot Spray no sump dual  
 FM=Free Stand  
 SM=Spot Spray w/Sump  
 CW=Cut Away w/Sump  
 GV=Gusset  
 IS=Inductor - Side mount  
 IN=Inductor  
 OP=Open Top  
 FS=Free Stand no sump  
 SS=Spot Spray no sump  
 SP=Specialty  
 PU=Pickup  
 CB=Cone Bot.  
 HZ=Horizontal  
 VT= Vertical

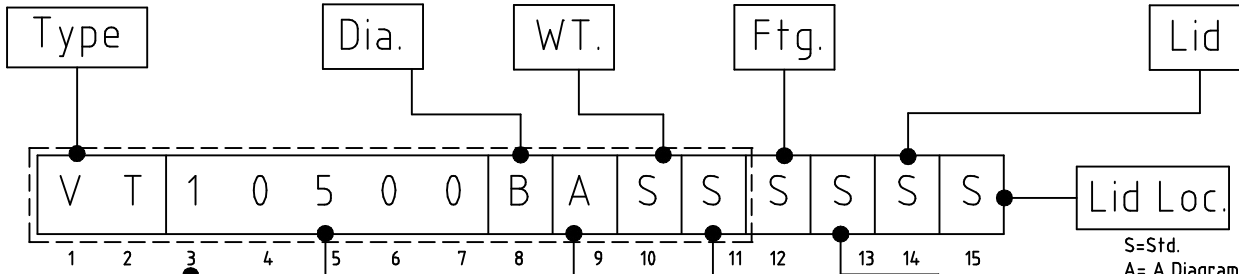
HZ150-30  
 HZ150-32  
 HZ200-32  
 HZ200-38  
 CB1000-64  
 CB1000-90  
 CB2600-85  
 CB2600-90  
 CB3000-90  
 CB3000-96  
 VT0300-35  
 VT0300-42  
 VT1500-64  
 VT1500-85  
 VT2000-64  
 VT2000-90  
 VT10500-2500  
 VT10500-2800

O = Off Center Sump  
 C = Center Sump  
 S= Standard  
 B= Largest  
 A=Smallest  
 X=Special request

T=20% HVY W/ CODE 5  
 R=10% HVY W/ CODE 5  
 Q=STD. WGT W/ CODE 5  
 H=50% HEAVY  
 U="UT"  
 P="FU"  
 O="CL"  
 N="LC"  
 M="VM"  
 L="RT"  
 K="OM"  
 F="MM"  
 E="AS"  
 D=Light (1.5 S.G.)  
 C=30% Hvy. (2.0 S.G.)  
 B=20% Hvy. (1.9 S.G.)  
 A=10% Hvy. (1.8 S.G.)  
 S=Std. (1.7 S.G.)

5= 3" BOLT IN BANJO W/ EPDM GASKET (10910)  
 3= 3" BOLT IN FLANGED BANJO (10915)  
 Z= 3" SS BOLT IN RHINO (10011)  
 Y= 2" SS BOLT IN (10203)  
 P= 2" Bulkhead w/ Anti-Vortex (12516)  
 W=1/2" SPINWELD (10442)  
 X=See Print  
 V=1" Spinweld (10443)  
 U=1-1/2" Spinweld (10242)  
 T=1-1/4" Spinweld (10085)  
 R=3/4" Spinweld (10239)  
 Q=1/2" Ace Bulkhead (10058(item 10442(spinweld) 3gal specialty))  
 O=3" Ftg. w/ Long Syphon Tube (12528 & 10489)  
 N=No fitting  
 M=2" Ftg. w/ Long Syphon Tube (10508 & 10488)  
 L=2" Ftg. w/ Syphon Tube (10508 & 10511)  
 K=3" S.S. Bulkhead (10487)  
 J=3" ACE Bulkhead. (12528)  
 I=2" S.S. Bulkhead (10490 or 10486)  
 H=2" H.D. Bulkhead (10912)  
 G=2" Ace Bulkhead (10508)  
 F=1-1/2" Ace Bulkhead (10507)  
 E=1-1/4" Ace Bulkhead (10918)  
 D=1" Ace Bulkhead (10485)  
 C=1" Poly Bulkhead (10503)  
 B=3/4" Ace Bulkhead (10484)  
 A=3/4" Poly Bulkhead (10501)  
 S=Std.

Z= 7" STEP VENT (12427)  
 Y= 5" STEP VENT (12110)  
 X=See Print  
 V= 5" Non-vented (10523)w/ EPDM Gasket (11042)  
 T=Tether  
 S=Std.  
 R=Standard 16" Precision Lid (19096)  
 U=7" Non-vented (12415)  
 Q=16" Hinged HYTEK(10516)  
 P=Summers 16" Precision Lid (19074)  
 O=7" Vented (12414)  
 N=No lid  
 M=8" Ring only (10520)  
 L=16" Non-vented (10751)  
 K=8" Non-vented (19166)  
 J=Banjo 16" Lid (vented 10750)  
 I=Banjo 10" Lid (vented 10021, non-vented 10080)  
 H=12" Non-Vented (10526)  
 G=5" Non-Vented (10523)  
 F=22" Vented (10530)  
 E=16" Vented (10528)  
 D=12" Vented (10527)  
 C=8" Vented (10525)  
 B=5" Vented (10522)  
 A=2" Vented (10631)



SUMP HZ / HE

F = FLAT  
 S = STANDARD  
 D = DEEP

10500  
 00025  
 Etc.

X=FDA Dark Green  
 W=White  
 Y=Yellow  
 C=JD Green  
 D= Ritchie Blue  
 E= Light Blue  
 F= BlackXLPE  
 G= ICM Dark Green  
 H= FDA Black  
 I= Dark Blue  
 J= Black / White inside  
 K= FDA Blue  
 L= FDA Snyder Green  
 M= White / Black inside  
 N= NOL/Dark Green  
 R= Spruce Green  
 T= Desert Tan  
 Q= Hagie Grey  
 P= Natural XLPE  
 U= KCI Green  
 V= Case Gray  
 O= Opaque White  
 A= Silver Metallic Grey  
 B= Black Re grind  
 Z= Covert Green

S=Std.  
 A= A Diagram  
 B= B Diagram  
 C= C Diagram  
 D= D Diagram  
 E= E Diagram  
 L=Ship Loose  
 N=No Ftg.  
 M= Multiple - see print  
 X=See Print

S=Std.  
 B=Viton  
 A=EPDM  
 N=No gasket  
 X=See Print

S=Std.  
 A= A Diagram  
 B= B Diagram  
 N= No lid  
 C= As centered as possible  
 M=Multiple Lids  
 X=See Print