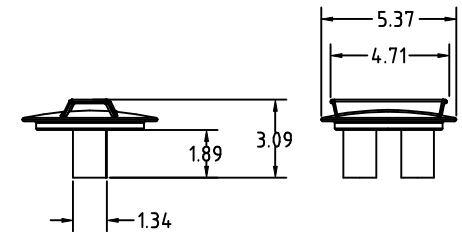
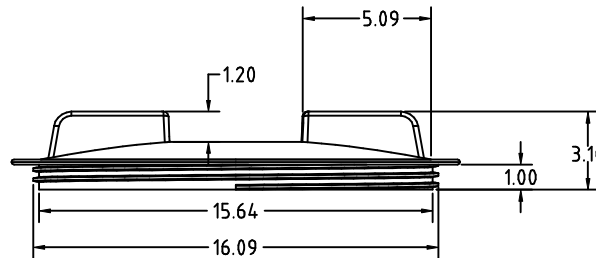
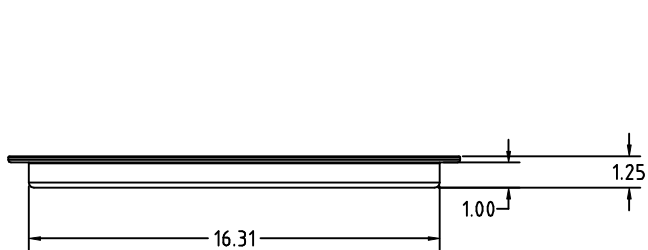
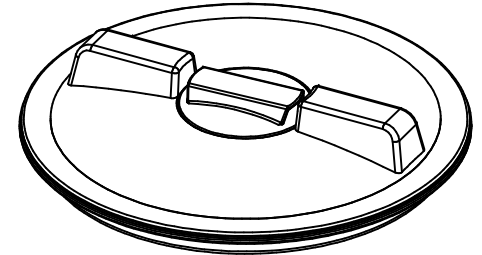
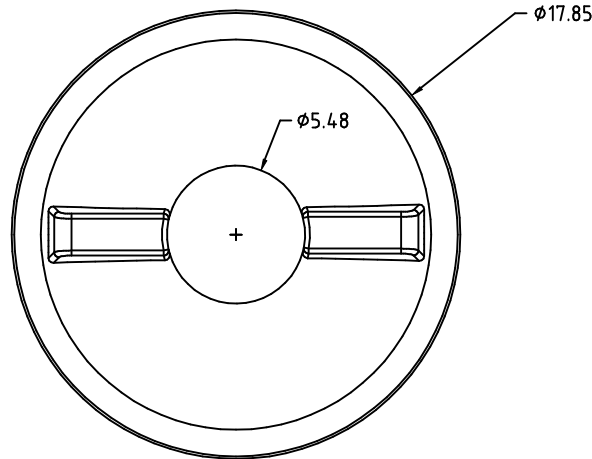
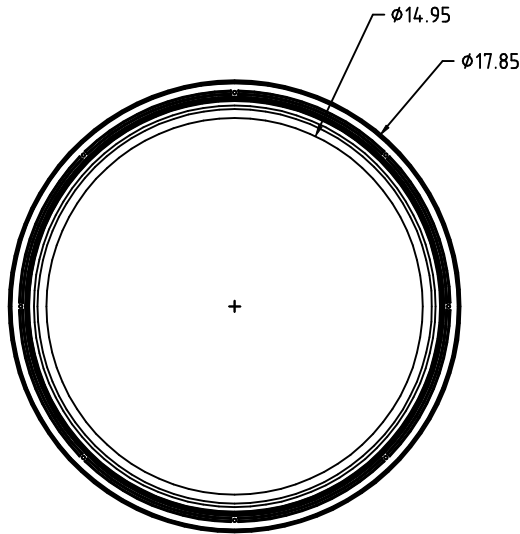


PROPRIETARY DATA

PROPERTY OF ACE ROTO-MOLD MFG., INC. INFORMATION FURNISHED HEREIN IS THE PROPERTY OF ACE ROTO-MOLD MFG., INC. AND SHALL NOT BE USED, DISCLOSED TO OTHERS, OR COPIED WITHOUT THE EXPRESSED WRITTEN CONSENT OF ACE ROTO-MOLD MFG., INC. ALL RIGHTS RESERVED.

10528


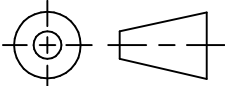
A



RING

LID

AIR BREATHER

				DRAWN / DATE NVE 6/22/05		MATERIAL		 INJECTION MOLDING A DIVISION OF DEN HARTOG INDUSTRIES, INC. 4010 HOSPERS DRIVE S., BOX 425, HOSPERS, IOWA 51238-0425	
				APPRD. / DATE DHJ 12/9/05		POLYPROPYLENE REFERENCE MATERIAL DATA SHEET FOR SPECIFIC PROPERTIES.			
A	UPDATE LOGO AND TOL. CCN 1296	4/20/07	GWC					CLIENT / DESCRIPTION	
REV	DESCRIPTION	DATE	APPRD					16 INCH LID WITH RING AND AIR BREATHER	
ALL DIMENSIONS ARE IN DECIMAL INCHES TOLERANCES UNLESS OTHERWISE SPECIFIED .XXX +/- .016 .XX +/- .032 .X +/- .062				THIRD ANGLE PROJECTION ANSI 14.5M 		NOTES: 1. NOM. WALL @ xxxxx 2. BLACK COLOR 3. SHOT WEIGHT 3.5 LBS.		SCALE N.S.	
								PART NO. 10528	