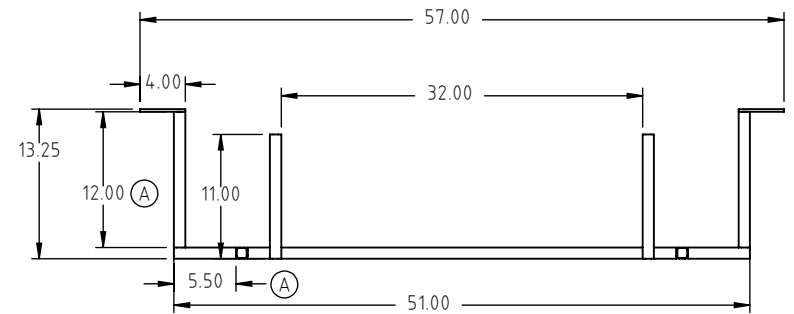
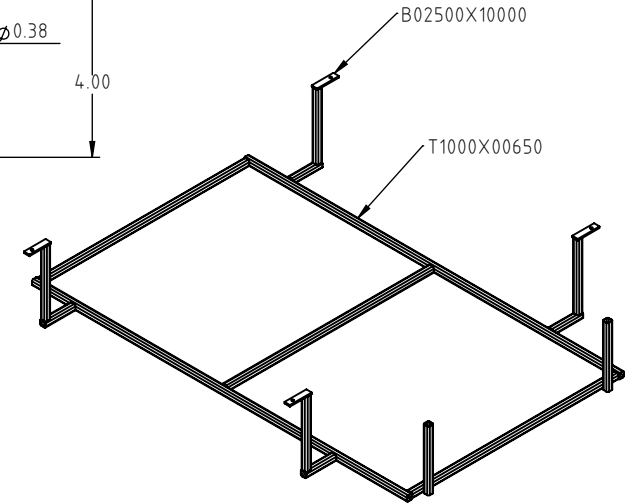
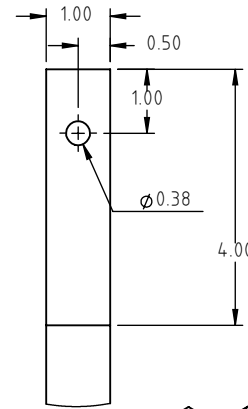


DETAIL A  
SCALE 1:3



				DRAWN / DATE ADH 2/11/09	MATERIAL MILD STEEL
A	12.00" WAS 13.00, 5.50" WAS 4.50"	ADH 2/14/11	2171	APPRD. / DATE KGJ 2/24/09	
REV	DESCRIPTION	BY / DATE	CCN		
ALL DIMENSIONS ARE IN DECIMAL INCHES TOLERANCES UNLESS OTHERWISE SPECIFIED		THIRD ANGLE PROJECTION ANSI 14.5M		SHOT WEIGHT:	NOTES: 1.) ALL ANGLES ARE 90° UNLESS OTHERWISE SPECIFIED
POLYETHYLENE ±1% @ 68°F		METAL DECIMAL ± .125" FRACTION ± 1/4" ANGLE ± 1°		SHIPPING WEIGHT:	
		FINISH: POWDER COATING, BLACK TILE, 40012			



**Den Hartog**  
INDUSTRIES, INC.

Ace Roto-Mold Injection Molding Blow Molding Sowjoy

4010 HOSPERS DRIVE S. BOX 425, HOSPERS, IOWA 51238-0421

DESCRIPTION CREEP MAT RACK	
SCALE N.S.	PART NO. 12652