

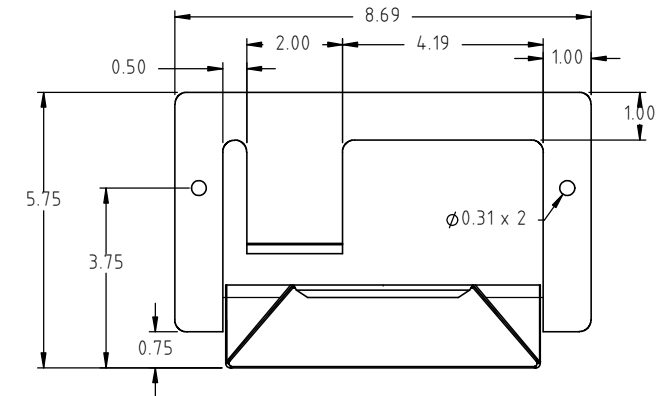
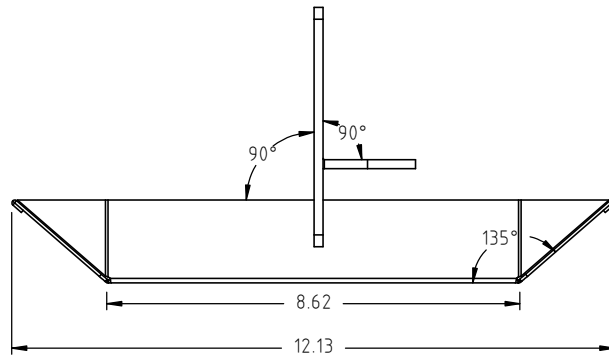
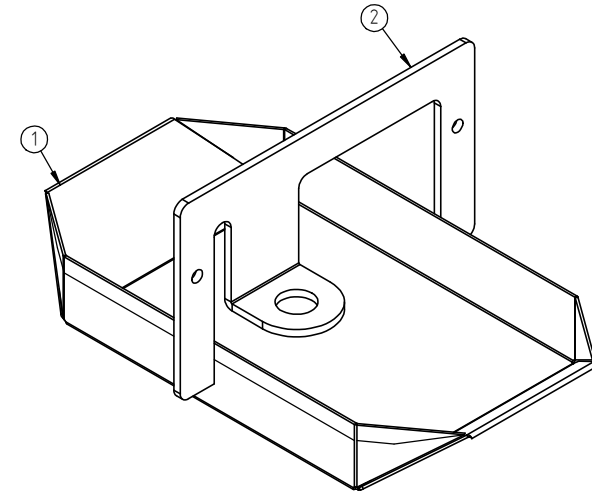
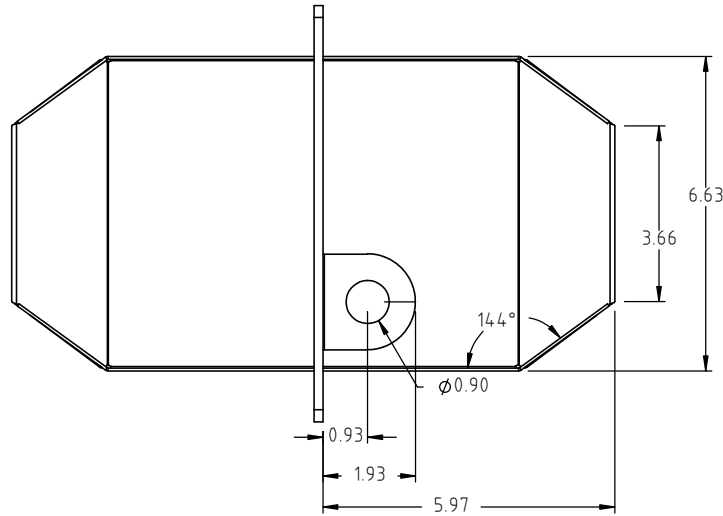
© DEN HARTOG INDUSTRIES, INC.

Copyright. All information furnished within this document, electronic file or design correspondence is the property of Den Hartog industries, Inc. and shall not be used, disclosed to others or copied without the expressed written consent of Den Hartog Industries, Inc.

KEY	PART NUMBER	DESCRIPTION	QTY.
1	12667-1	WATERER CUP-NURSERY-PAN	1
2	12665-1	WATERER CUP SUPPORT BRACKET	1

(A) 12667

A



				DRAWN / DATE ADH 2/12/09	MATERIAL
A	12667 WAS 12665, DESCRIPTION, DRAWING TEMPLATE, TABLE UPDATED/ADDED	ADH 4/13/12	2407	APPRD. / DATE KGJ 2/24/09	
REV	DESCRIPTION	BY / DATE	CCN		
ALL DIMENSIONS ARE IN DECIMAL INCHES TOLERANCES UNLESS OTHERWISE SPECIFIED		THIRD ANGLE PROJECTION ANSI 14.5M		SHOT WEIGHT:	NOTES:
POLYETHYLENE		METAL DECIMAL ± .125" FRACTION ± 1/4" ANGLE ± 1°		SHIPPING WEIGHT: 3.00 LBS	
±1% @ 68° F				FINISH:	



Den Hartog
INDUSTRIES, INC.

Acro Roto-Mold Injection Molding Blow Molding Sowjey

4010 HOSPERS DRIVE S. BOX 425, HOSPERS, IOWA 51238-0425

DESCRIPTION WATERER, NURSERY CUP	
SCALE N.S.	PART NO. 12667