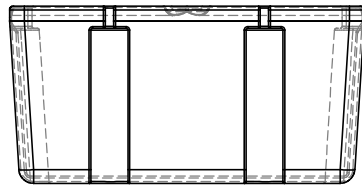
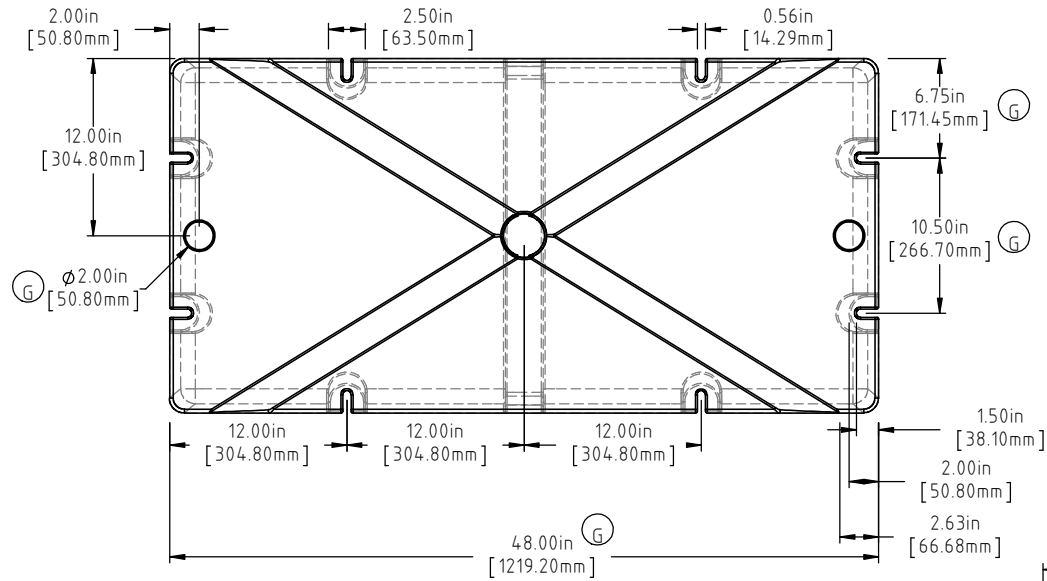
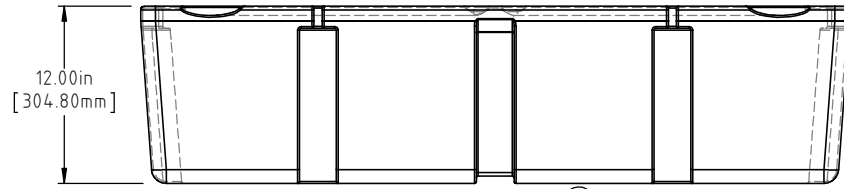


Copyright. All information furnished within this document, electronic file or design correspondence is the property of Den Hartog Industries, Inc. and shall not be used, disclosed to others or copied without the expressed written consent of Den Hartog Industries, Inc.



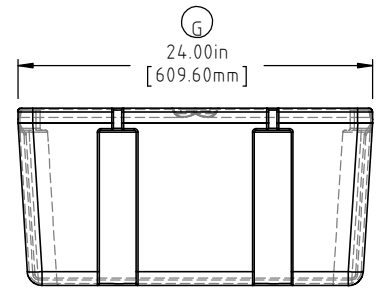
E



12.00in [304.80mm]

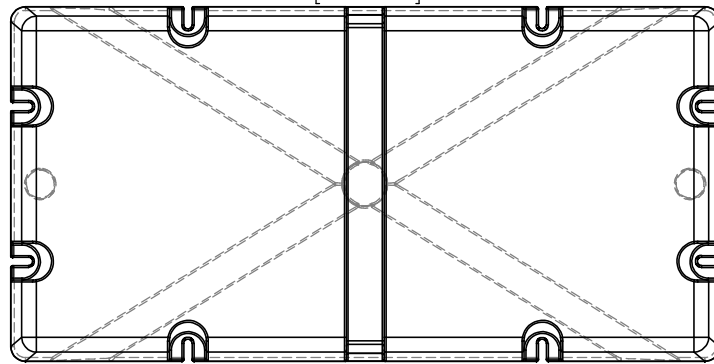
46.38in [1177.93mm]

1.50in [38.10mm]



24.00in [609.60mm]

22.63in [574.68mm]



F

NOTE: BUOYANCY IS 433 LBS.(196.41 KG)

G	48.00" WAS 47.75", 24.00" WAS 23.75", CORRESPONDING DIMENSIONS UPDATED. SPINWELD DETAILS ADDED.	ADH 11/17/15	3159
F	BOTTOM AND SIDE VIEWS ADDED TO PRINT	ADH 12/4/14	2971
E	33 LBS WAS 31 LBS	ADH 6/20/12	2420
D	METRIC DIMENSIONS ADDED	ADH 6/25/08	1685
C	ADD BUOYANCY NOTE	GWC 1/8/07	
C	CHANGE WEIGHTS AF WAS 22 FF WAS 36	GWC 1/8/07	
B	CHANGED NOM. WALL	12-20-98	
A	CHANGE WEIGHTS	11/16/94	
REV	DESCRIPTION	BY / DATE	CCN

DRAWN / DATE	MATERIAL
DEAN 2/24/94	POLYETHYLENE
APPRD. / DATE	
ADH 11/5/07	

SHOT WEIGHT:	NOTES: (B)(C)(E)
23 LBS. (10.43 KG.)	1.) AF 23 LBS. (10.43 KG.)
SHIPPING WEIGHT:	2.) FF 33 LBS. (14.97 KG.)
SEE NOTES	3.) 0.150 IN (3.81 mm) NOM. WALL
FINISH:	

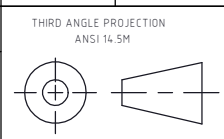


**Den Hartog**  
INDUSTRIES, INC.

Ace Roto-Mold Injection Molding Blow Molding Sowjoy

4010 HOSPERS DRIVE S. BOX 425, HOSPERS, IOWA 51238-0425

ALL DIMENSIONS ARE IN DECIMAL INCHES TOLERANCES UNLESS OTHERWISE SPECIFIED	
POLYETHYLENE	METAL DECIMAL ± .125" FRACTION ± 1/4" ANGLE ± 1°
±1% @ 68°F	



DESCRIPTION	24 X 48 X 12 FLOAT
SCALE	N.S.
PART NO.	2448-12