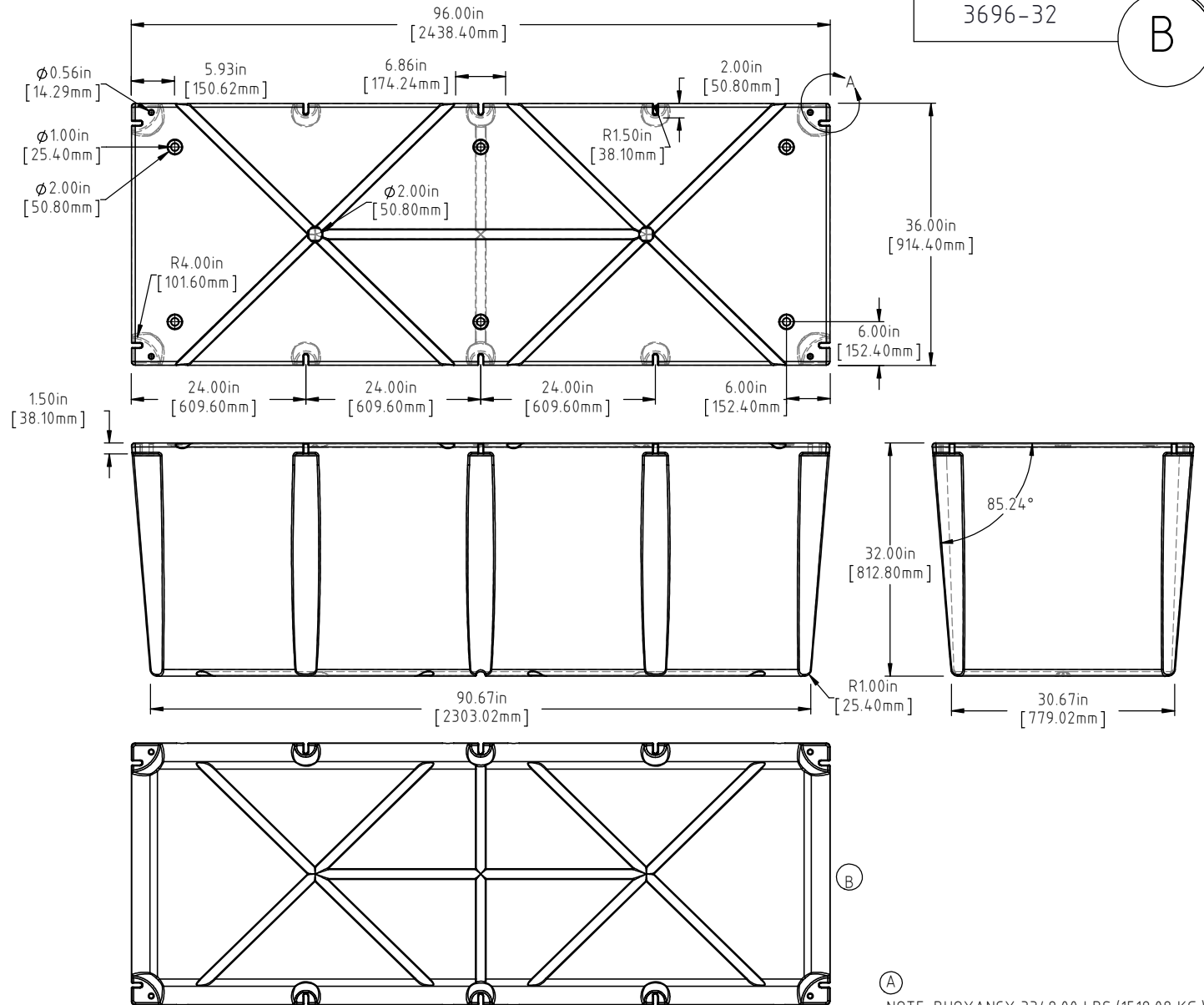
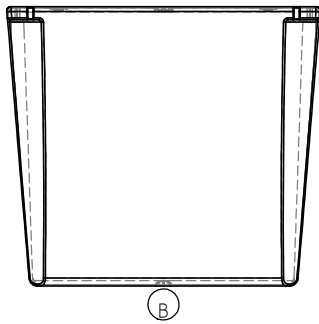
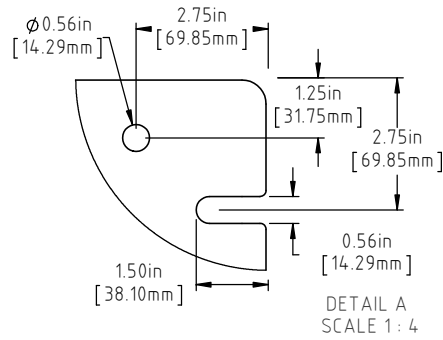


Copyright. All information furnished within this document, electronic file or design correspondence is the property of Den Hartog Industries, Inc. and shall not be used, disclosed to others or copied without the expressed written consent of Den Hartog Industries, Inc.



NOTE: BUOYANCY 3349.00 LBS.(1519.08 KG.)

| | | | |
|---|--|--------------------------------------|------|
| B | BOTTOM AND SIDE VIEWS ADDED TO PRINT | ADH 12/4/14 | 2971 |
| A | 149 LBS WAS 152 LBS, BUOYANCY NOTE ADDED | ADH 6/22/12 | 2420 |
| REV | DESCRIPTION | BY / DATE | CCN |
| ALL DIMENSIONS ARE IN DECIMAL INCHES TOLERANCES UNLESS OTHERWISE SPECIFIED | | THIRD ANGLE PROJECTION ANSI 14.5M | |
| POLYETHYLENE | | | |
| ±1% @ 68°F | | | |
| METAL DECIMAL ± .125" FRACTION ± 1/4" ANGLE ± 1° | | | |

| | |
|------------------------------------|----------------------------------|
| DRAWN / DATE DHJ 4/10/07 | MATERIAL POLYETHYLENE |
| APPRD. / DATE ADH 11/5/07 | |
| SHOT WEIGHT: 90 LBS.(40.82 KG.) | NOTES: (A) |
| SHIPPING WEIGHT: SEE NOTES | 1.) AF 90 LBS.(40.82 KG.) |
| FINISH: | 2.) FF 149 LBS.(67.59 KG.) |
| | 3.) WALL = .125 MIN. / .180 AVE. |

Den Hartog
INDUSTRIES, INC.

Ace Roto-Mold Injection Molding Blow Molding Sowjoy

4010 HOSPERS DRIVE S. BOX 425, HOSPERS, IOWA 51238-0425

| | | |
|-------------|--------------------|------------------|
| DESCRIPTION | 36 X 96 X 32 FLOAT | |
| SCALE | N.S. | PART NO. 3696-32 |