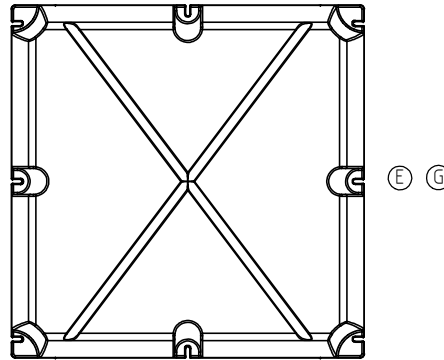
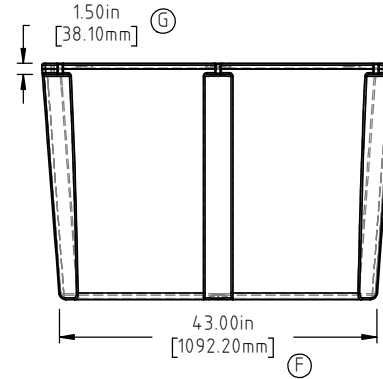
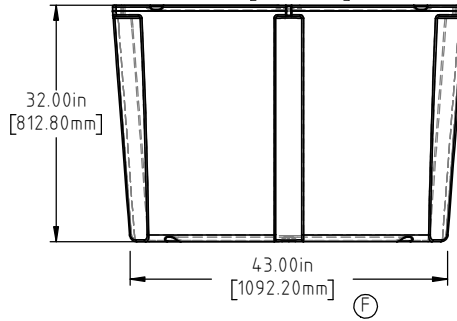
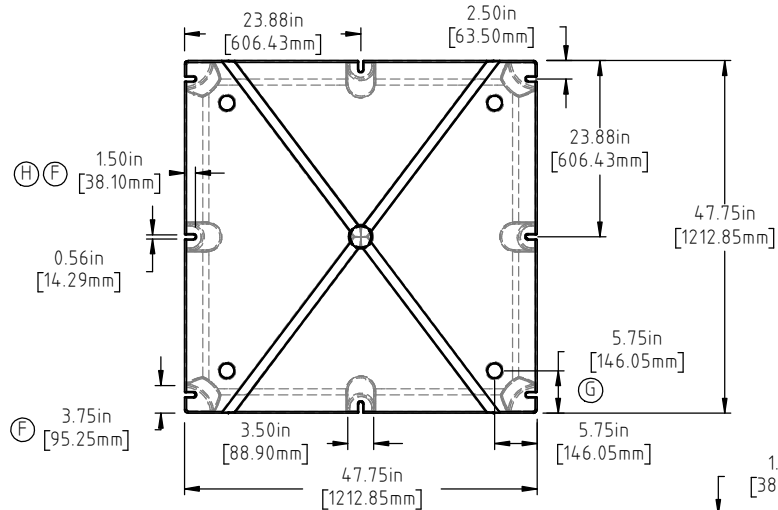
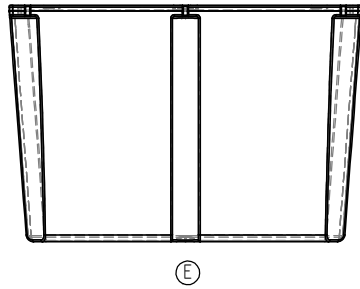


Copyright. All information furnished within this document, electronic file or design correspondence is the property of Den Hartog Industries, Inc. and shall not be used, disclosed to others or copied without the expressed written consent of Den Hartog Industries, Inc.




(B)(D)  
NOTE: BUOYANCY IS 2231 LBS.(1011.96 KG)

H	SLOT DEPTH DISCREPANCY REVERTED BACK CORRECT 1.50" DIMENSION.	ADH 6/2/17	3393
G	DRAFT ON COLUMNS AND SPINWELD FLATS SHOWN ON PRINT. 150 WAS 163	ADH 5/19/15	3072
F	43.00" WAS 44.00", 3.75" WAS 4.50", 2.00" WAS 1.50"	ADH 2/16/15	3013
E	BOTTOM/SIDE VIEWS ADDED TO PRINT.	ADH 12/4/14	2971
D	108 LBS WAS 106 LBS, 2231 LBS WAS 2191 LBS	ADH 6/25/12	2420
C	METRIC DIMENSIONS ADDED	ADH 6/20/08	1685
B	ADD BUOYANCY NOTE	GWC 1/10/07	
A	CORRECT HEIGHT DIM	10/27/04	
REV	DESCRIPTION	BY / DATE	CCN

DRAWN / DATE DHJ 8/29/03	MATERIAL POLYETHYLENE
APPRD. / DATE ADH 11/5/07	

SHOT WEIGHT: 68 LBS. (30.84 KG.)	NOTES: (A)(D) 1.) AF 68 LBS. (30.84 KG.) 2.) FF 108 LBS. (48.99 KG.) 3.) 0.150 IN (3.81 mm) NOM. WALL
SHIPPING WEIGHT: SEE NOTES	
FINISH:	



**Den Hartog**  
INDUSTRIES, INC.

*Acra Roto-Mold Injection Molding Blow Molding Sowjoy*

4010 HOSPERS DRIVE S. BOX 425, HOSPERS, IOWA 51238-0425

DESCRIPTION	48 X 48 X 32 FLOAT	
SCALE	N.S.	PART NO. 4848-32

ALL DIMENSIONS ARE IN DECIMAL INCHES TOLERANCES UNLESS OTHERWISE SPECIFIED	
POLYETHYLENE ±1% @ 68°F	METAL DECIMAL ± .125" FRACTION ± 1/4" ANGLE ± 1°

