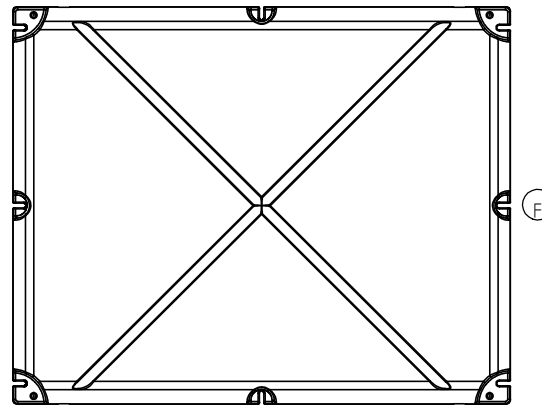
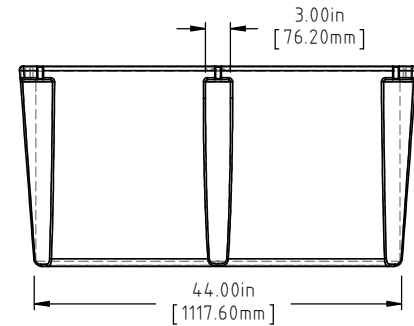
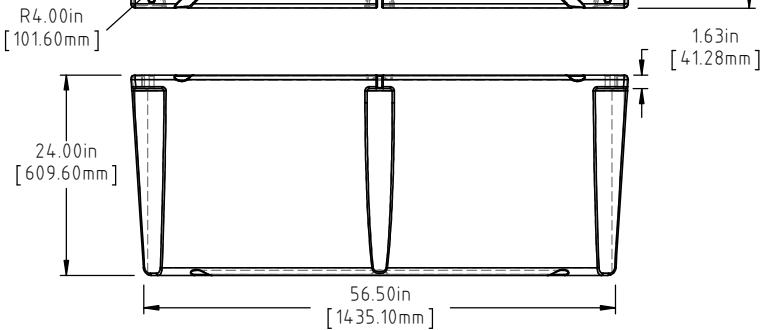
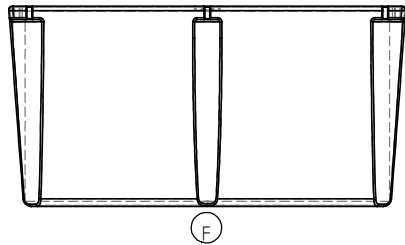
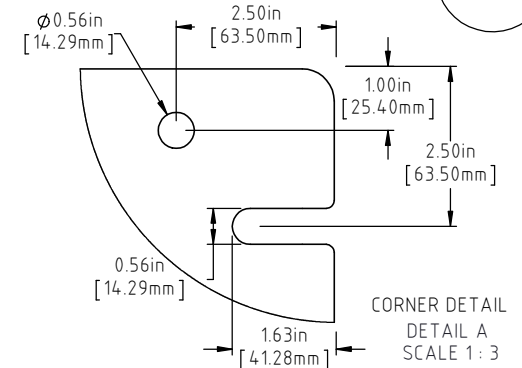
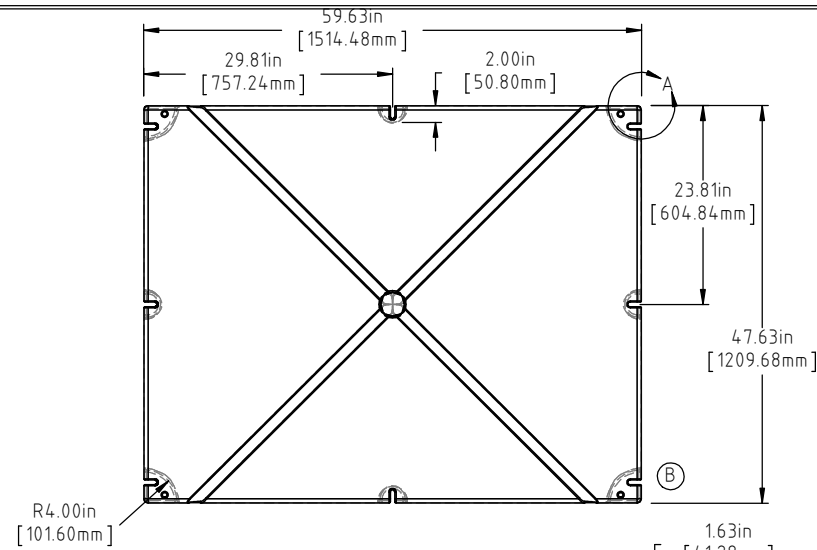


© DEN HARTOG INDUSTRIES, INC.

Copyright. All information furnished within this document, electronic file or design correspondence is the property of Den Hartog Industries, Inc. and shall not be used, disclosed to others or copied without the expressed written consent of Den Hartog Industries, Inc.

4860-24

F



NOTE: BUOYANCY IS 2199 LBS.(997.45 KG)

F	BOTTOM/SIDE VIEWS ADDED TO PRINT.	ADH 12/4/14	2971
E	106 LBS WAS 103 LBS, 2199 LBS WAS 2174 LBS	ADH 6/25/12	2420
D	METRIC DIMENSIONS ADDED	ADH 7/1/08	1685
C	ADD BUOYANCY NOTE	GWC 1/11/07	
B	CHANGE CORNER SLOT ORIENTATION	12/27/05	
A	CHANGE FF WEIGHT WAS 114	12/27/05	
REV	DESCRIPTION	BY / DATE	CCN

DRAWN / DATE	MATERIAL
REH 9/9/98	POLYETHYLENE
APPRD. / DATE	
ADH 11/5/07	

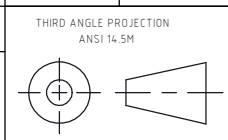


Den Hartog
INDUSTRIES, INC.

Ace Roto-Mold Injection Molding Blow Molding Sowjoy

4010 HOSPERS DRIVE S. BOX 425, HOSPERS, IOWA 51238-0425

ALL DIMENSIONS ARE IN DECIMAL INCHES
TOLERANCES UNLESS OTHERWISE SPECIFIED
POLYETHYLENE METAL
DECIMAL ± .125"
FRACTION ± 1/4"
ANGLE ± 1°
±1% @ 68°F



SHOT WEIGHT:
66 LBS. (29.94 KG.)
SHIPPING WEIGHT:
SEE NOTES
FINISH:

NOTES: (A) (E)
1.) AF 66 LBS. (29.94 KG.)
2.) FF 106 LBS. (48.08 KG.)
3.) 0.150 IN (3.81 mm) NOM. WALL

DESCRIPTION	48 X 60 X 24 FLOAT
SCALE	N.S.
PART NO.	4860-24