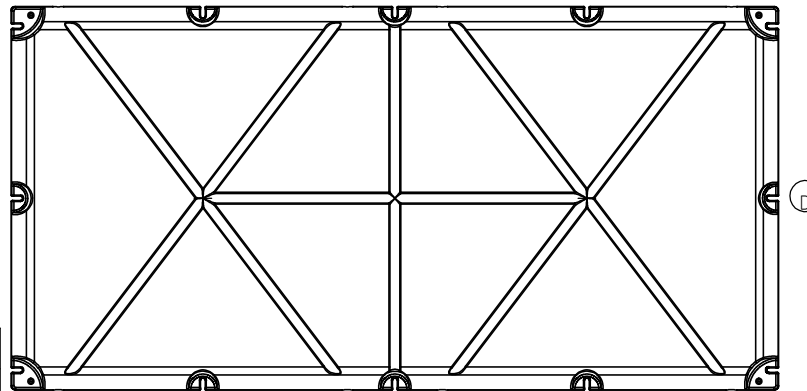
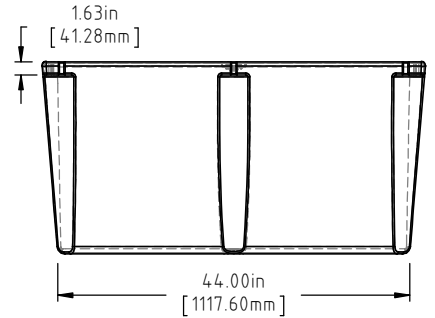
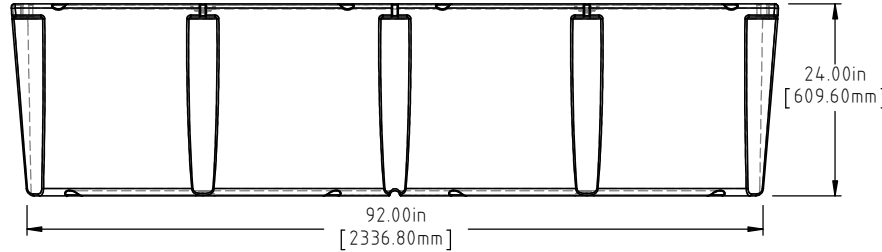
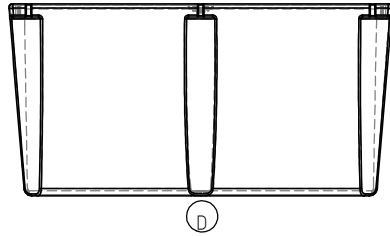
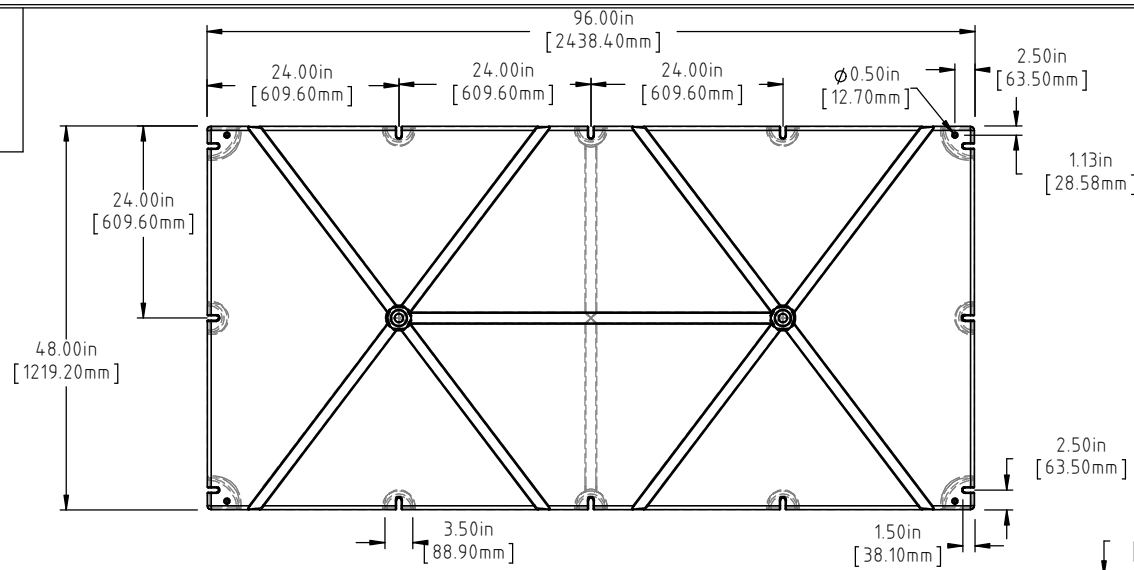


© DEN HARTOG INDUSTRIES, INC.

Copyright. All information furnished within this document, electronic file or design correspondence is the property of Den Hartog Industries, Inc. and shall not be used, disclosed to others or copied without the expressed written consent of Den Hartog Industries, Inc.

4896-24

D



(A) (C)  
NOTE: BUOYANCY 3578.00 LBS.(1622.95 KG.)

D	BOTTOM/SIDE VIEWS ADDED TO PRINT.	ADH 12/4/14	2971
C	163 LBS WAS 157 LBS, 3578 LBS WAS 3414 LBS	ADH 6/28/12	2420
B	METRIC DIMENSIONS ADDED	ADH 6/23/08	1685
A	ADD BUOYANCY NOTE	GWC 1/11/07	
A	CHANGE WEIGHT FF WAS 180	GWC 1/11/07	
REV	DESCRIPTION	BY / DATE	CCN

DRAWN / DATE DHJ 3/10/98	MATERIAL POLYETHYLENE
APPRO. / DATE ADH 11/6/07	

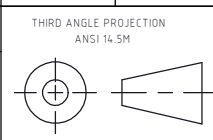


**Den Hartog**  
INDUSTRIES, INC.

Ace Roto-Mold Injection Molding Blow Molding Sowjoy

4010 HOSPERS DRIVE S. BOX 425, HOSPERS, IOWA 51238-0425

ALL DIMENSIONS ARE IN DECIMAL INCHES  
TOLERANCES UNLESS OTHERWISE SPECIFIED  
POLYETHYLENE  
±1% @ 68°F



SHOT WEIGHT:  
98 LBS.(44.45 KG.)  
SHIPPING WEIGHT:  
SEE NOTES  
FINISH:

NOTES: (A) (C)  
1.) AF 98 LBS.(44.45 KG.)  
2.) FF 163 LBS.(73.94 KG.)  
3.) 0.150in(3.81mm) NOM. WALL

DESCRIPTION 48 X 96 X 24 FLOAT	SCALE N.S.	PART NO. 4896-24
-----------------------------------	---------------	---------------------