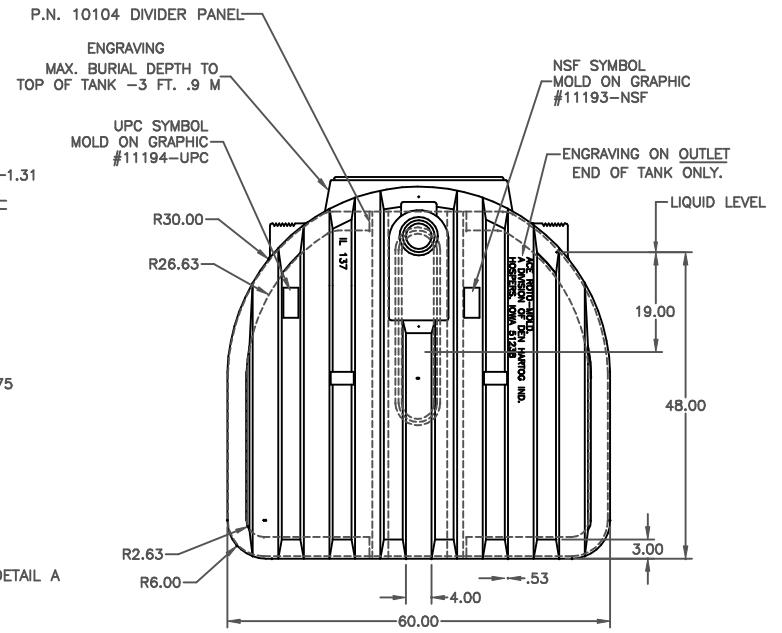
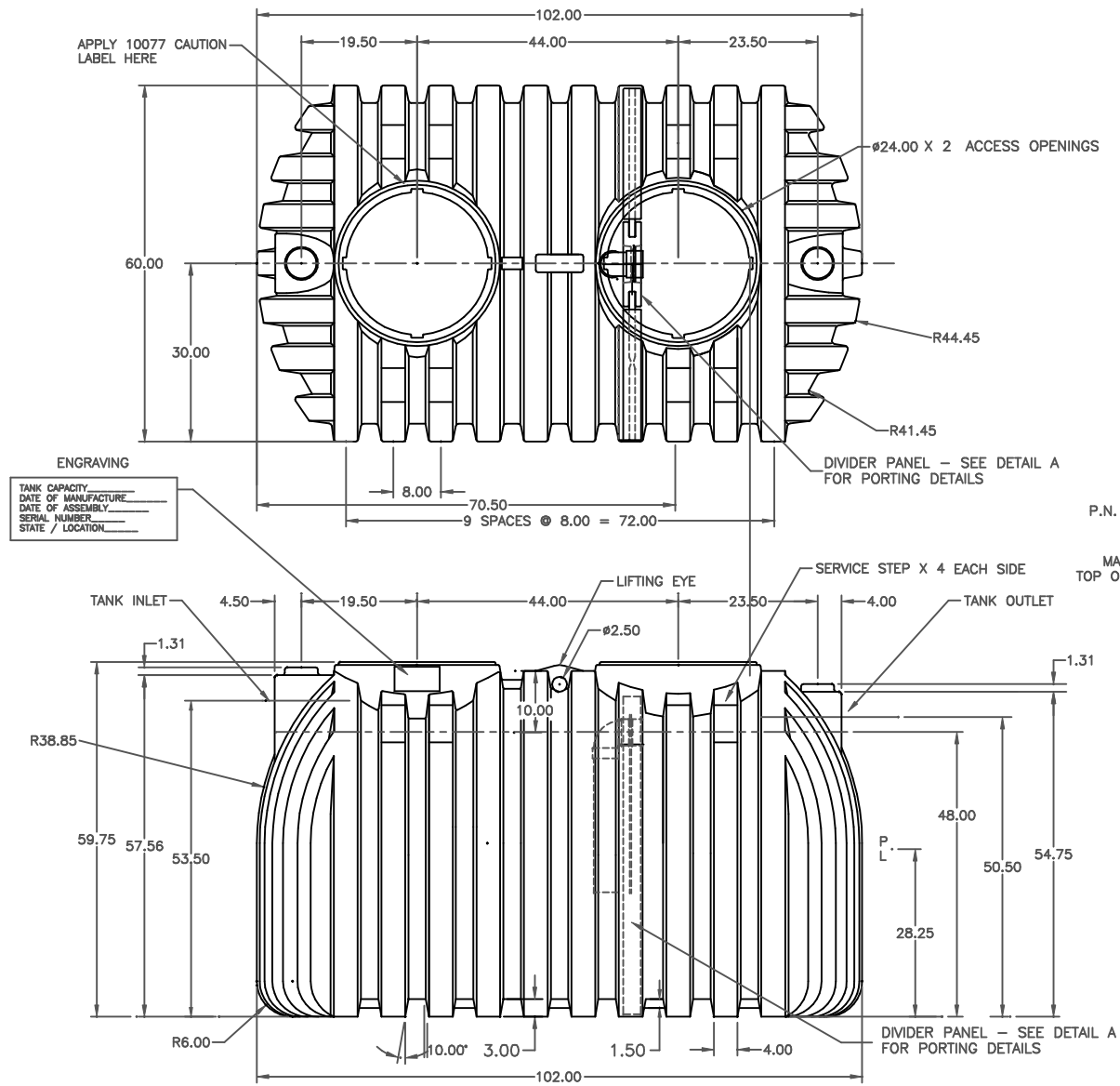


PROPRIETARY DATA

PROPERTY OF ACE ROTO-MOLD MFG., INC. INFORMATION FURNISHED HEREIN IS THE PROPERTY OF ACE ROTO-MOLD MFG., INC. AND SHALL NOT BE USED, DISCLOSED TO OTHERS, OR COPIED WITHOUT THE EXPRESSED WRITTEN CONSENT OF ACE ROTO-MOLD MFG., INC. ALL RIGHTS RESERVED.



Ⓒ REFERENCE PUBLICATION 10039 FOR SEPTIC TANKS OR PUBLICATION 10149 FOR CISTERN TANKS FOR SPECIFIC INSTALLATION GUIDELINES.

D ADDED UPC & NSF GRAPHIC 5/29/07

C	ADDED PUBLICATION REF	9/30/05	DRAWN / DATE	MATERIAL
B	DIVIDER FTG. REVISION	4/26/99	REH / 11/1/97	MOBIL 134 HDPE OR EQUIVALENT REFERENCE MATERIAL DATA SHEET FOR SPECIFIC PROPERTIES.
A	GENERAL REVISION	1/11/99	APPRD. / DATE REH / 11/1/97	
REV	DESCRIPTION	DATE	APPRD	
ALL DIMENSIONS ARE IN DECIMAL INCHES TOLERANCES UNLESS OTHERWISE SPECIFIED ± .5% @ 68° F			THIRD ANGLE PROJECTION ANSI 14.5M	NOTES: 1. NOM. WALL @ .250 2. YELLOW COLOR 3. SHOT WEIGHT 330 LBS.

ACE ROTO-MOLD A DIVISION OF DEN HARTOG INDUSTRIES, INC. 4018 HWY. 60 BLVD., BOX 421, HOSPERS, IOWA 51238	
CLIENT / DESCRIPTION	1000 GAL. TWO COMPARTMENT SEPTIC TANK
SCALE	N.S.
PART NO.	AST-1000-2