

PROPRIETARY DATA

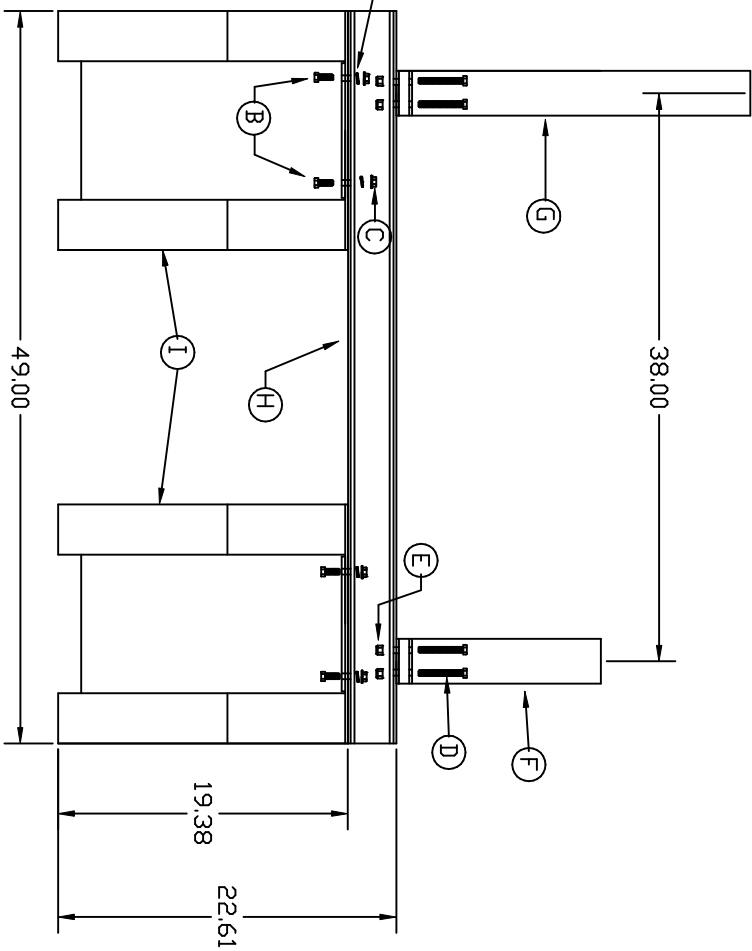
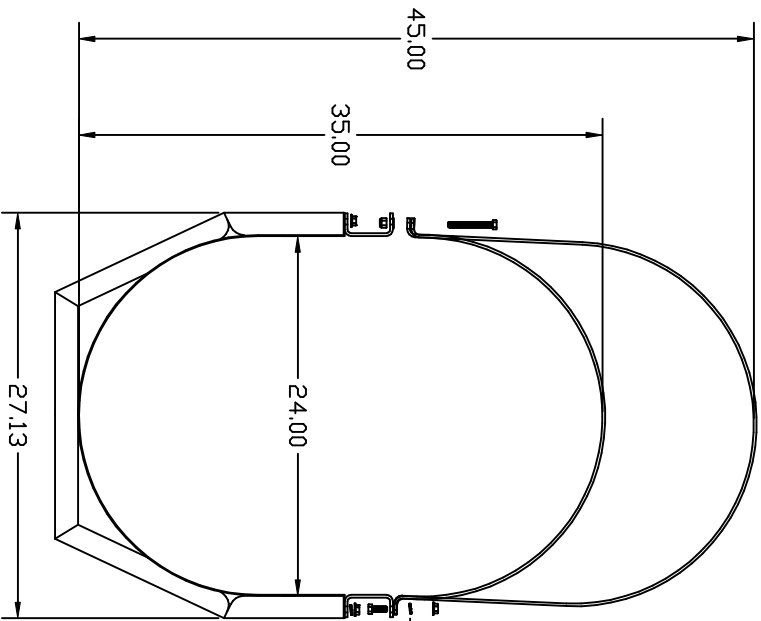
PROPERTY OF ACE ROTO-MOLD MFG., INC. INFORMATION FURNISHED HEREIN IS THE PROPERTY OF ACE ROTO-MOLD MFG., INC. AND SHALL NOT BE USED, DISCLOSED TO OTHERS, OR COPIED WITHOUT THE EXPRESSED WRITTEN CONSENT OF ACE ROTO-MOLD MFG., INC. ALL RIGHTS RESERVED.

MATERIAL/PART SCHEDULE

CAW0200-C

A

KEY	PART/DRAWING #	DESCRIPTION	QTY.
	CAW250-BUNDLE	Parts A-H	1
A	SJ10023	3/8 SPLIT LOCK WASHER	12
B	SJ10089	3/8 X 1 HEX GRADE 5 BOLT	12
C	SJ11093	3/8 - 16 HEX GRADE 5 NUT	12
D	SJ10097	3/8 X 3 HEX BOLT	4
E	SJ10949	3/8 ZINC PLATED NUT	4
F	STRAP	3 X 42.5 14 GA. MILD STEEL	1
G	STRAP	3 X 62 - 14 GA. MILD STEEL	1
H	CROSSBAR	6 X 49 X 3/16 MILD STEEL	2
I	CAW200/250-BASE		2



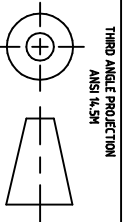
REV	DESCRIPTION	DATE	APPRD
A	TOLERANCE WAS 1% @ 68° F	3/9/07	GWC

DRAWN / DATE  
NVE 1/25/05  
APPRD / DATE  
DHJ 12/9/05

MATERIAL  
BLACK COLOR - POWDER COATED

CLIENT / DESCRIPTION  
CRADLE ASSEMBLY FOR 200 GALLON CUT AWAY APPLICATOR TANK

ALL DIMENSIONS ARE IN DECIMAL INCHES  
TOLERANCES UNLESS OTHERWISE SPECIFIED  
DECIMAL +/- .125"  
FRACTION +/- 1/4"  
ANGLE +/- 1°



SCALE  
N.S.

PART NO.  
CAW0200-C

**ACE ROTO-MOLD**  
A DIVISION OF DEN HARTOG INDUSTRIES, INC.  
4018 HWY. 60 BLVD., BOX 421, HOSPERS, IOWA 51238