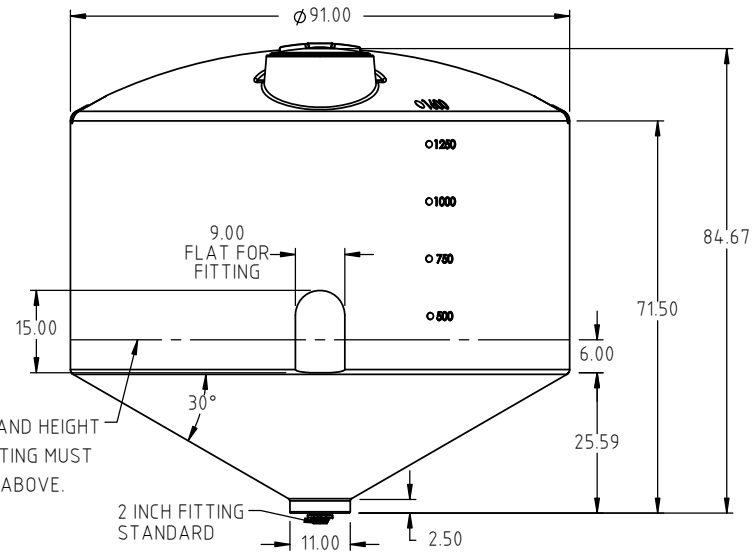
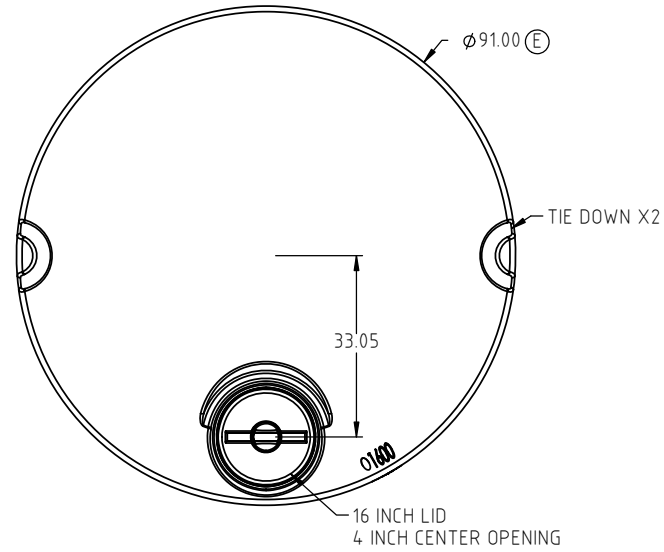


Copyright. All information furnished within this document, electronic file or design correspondence is the property of Den Hartog Industries, Inc. and shall not be used, disclosed to others or copied without the expressed written consent of Den Hartog Industries, Inc.



Ⓢ FITTING MUST BE ABOVE.

F	NOTE ADDED	ADH 11/28/19	3674
E	WAS 90	DHJ 5-11-17	3385
D	ISOLATED STAND AND TANK	NVE 6/6/06	
C	ADDED HEIGHT DIMENSIONS	4/11/06	
B	CHANGE SUMP	3/9/06	
A	CHANGE DIM BASE	4/9/03	
REV	DESCRIPTION	BY / DATE	CCN

DRAWN / DATE	MATERIAL
DHJ 3/10/03	HDPE OR EQUIVALENT REFERENCE MATERIAL DATA SHEET FOR SPECIFIC PROPERTIES.
APPRD. / DATE	
REH 4/18/07	



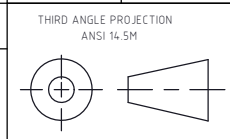
Den Hartog
INDUSTRIES, INC.

Ace Roto-Mold Injection Molding Blow Molding Sowjoy

4010 HOSPERS DRIVE S. BOX 425, HOSPERS, IOWA 51238-0425

ALL DIMENSIONS ARE IN DECIMAL INCHES
TOLERANCES UNLESS OTHERWISE SPECIFIED

POLYETHYLENE	METAL DECIMAL ± .125" FRACTION ± 1/4" ANGLE ± 1°
±1% @ 68°F	



SHOT WEIGHT:	284 LBS.
SHIPPING WEIGHT:	
FINISH:	

NOTES:
1.) 1. NOM. WALL @ .326

DESCRIPTION	1600 GALLON CONE BOTTOM TANK	
SCALE	N.S.	PART NO. CB1600-90