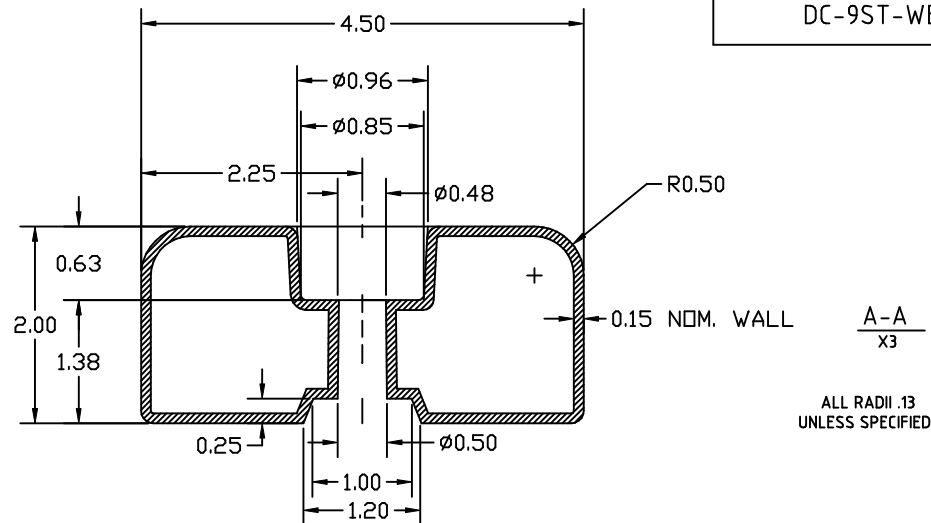


PROPRIETARY DATA

PROPERTY OF ACE ROTO-MOLD MFG., INC. INFORMATION FURNISHED HEREIN IS THE PROPERTY OF ACE ROTO-MOLD MFG., INC. AND SHALL NOT BE USED, DISCLOSED TO OTHERS, OR COPIED WITHOUT THE EXPRESSED WRITTEN CONSENT OF ACE ROTO-MOLD MFG., INC. ALL RIGHTS RESERVED.

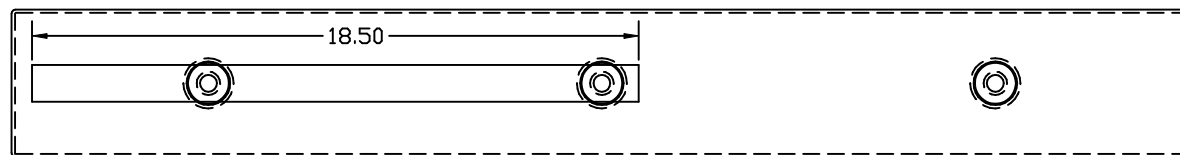
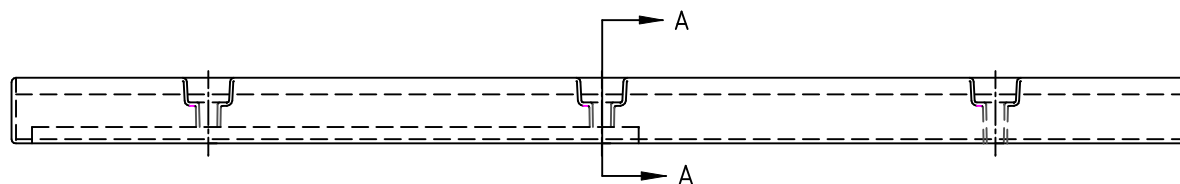
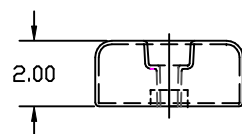
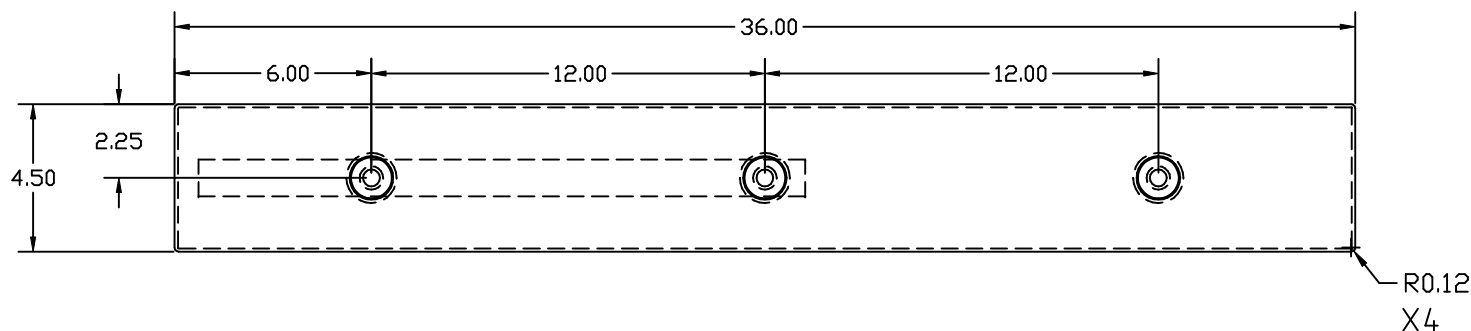
DC-9ST-WE

A



A-A  
X3

ALL RADII .13  
UNLESS SPECIFIED



DRAWN / DATE  
NVE 3/30/06

MATERIAL

FLEX  $\text{\textcircled{A}}$   
MUT36-00 OR EQUAL EVA @ 2.5 LB.

FIRM  $\text{\textcircled{A}}$   
MOBIL 135 OR EQUAL @ 2.5 LB.



ACE ROTO-MOLD

A DIVISION OF DEN HARTOG INDUSTRIES, INC.  
4010 HOSPERS DRIVE S. BOX 425, HOSPERS, IOWA 51238-0421

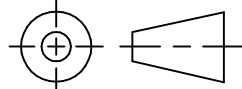
CLIENT / DESCRIPTION

ACE NO. 9 DOCK CUSHION X 3 FT.

ALL DIMENSIONS ARE IN DECIMAL INCHES  
TOLERANCES UNLESS OTHERWISE SPECIFIED

$\pm$  1% @ 68° F

THIRD ANGLE PROJECTION  
ANSI 14.5M



NOTES:

1. NOM. WALL @ .150
2. WHITE OR BLACK COLOR
3. ADD U.V. INHIBITOR TO EVA RESIN MIX

SCALE

N.S.

PART NO.

DC-9ST-WE