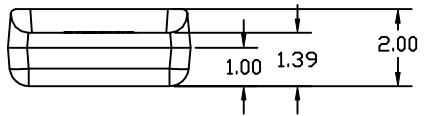
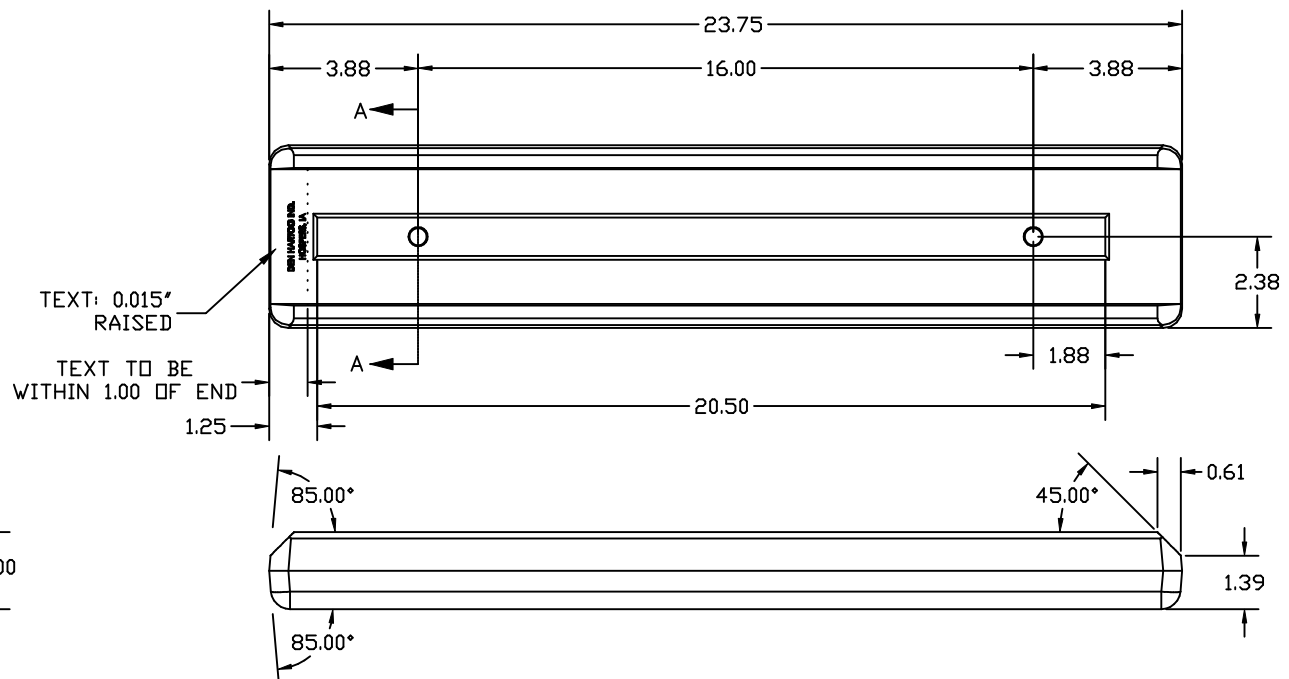
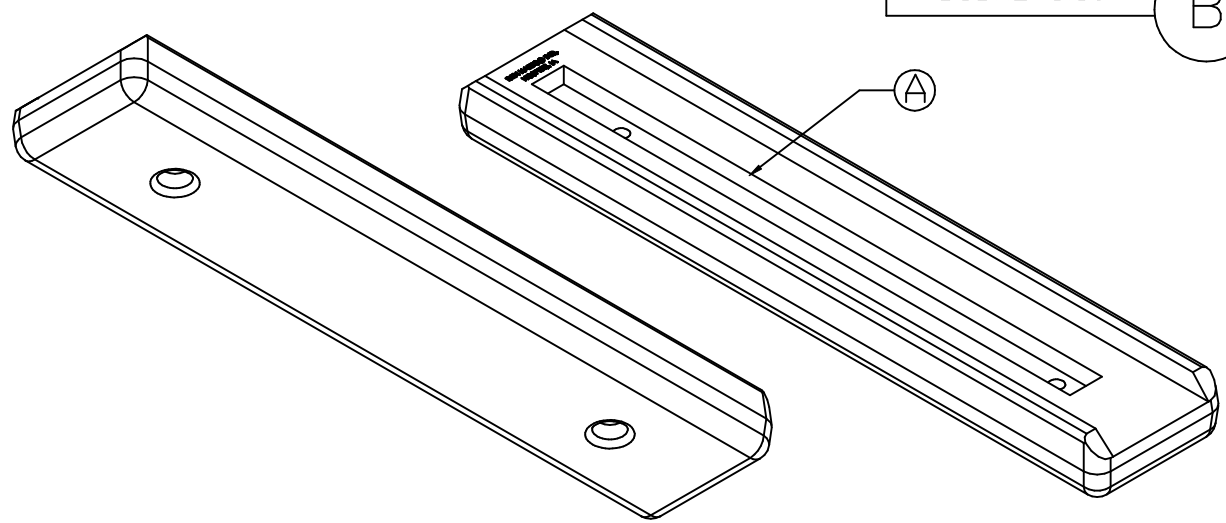
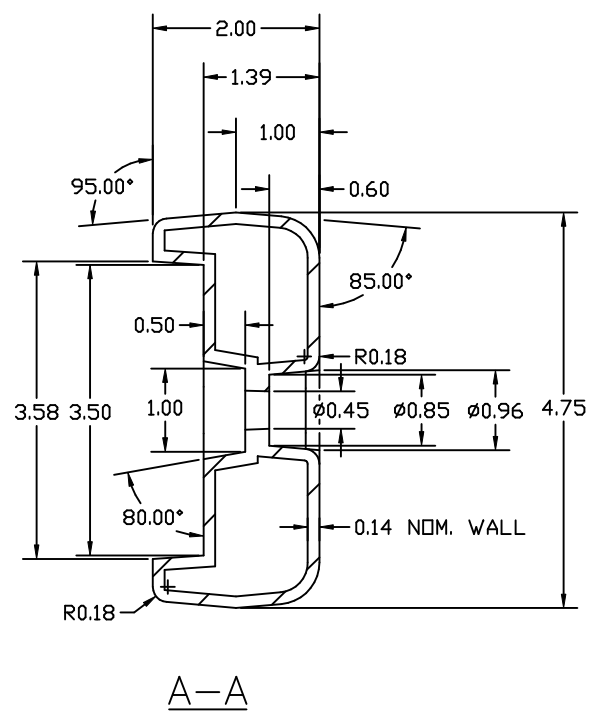
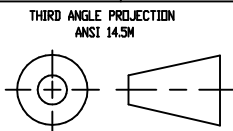


Copyright. All information furnished within this document, electronic file or design correspondence is the property of Den Hartog Industries, Inc. and shall not be used, disclosed to others or copied without the expressed written consent of Den Hartog Industries, Inc.



ALL RADII 0.50 UNLESS SPECIFIED

				DRAWN / DATE NVE 5/25/06	MATERIAL
B	MATERIALS IDENTIFIED, DRAWING TEMPLATE UPDATED	ADH 9/14/09	1931	APPRD. / DATE ADH 11/8/07	⑧ 80007=80% 80001=20%
A	FASTENER RECESS ADDED	NVE 7/19/06			
REV	DESCRIPTION	BY / DATE	CCN	SHOT WEIGHT: 1.67 LBS.	NOTES:
ALL DIMENSIONS ARE IN DECIMAL INCHES TOLERANCES UNLESS OTHERWISE SPECIFIED				SHIPPING WEIGHT:	1.) NOM. WALL @ .140
POLYETHYLENE				FINISH:	2.) COMPOUNDED U.V. INHIBITOR
METAL DECIMAL ± .125" FRACTION ± 1/4" ANGLE ± 1°					3.) BLACK OR WHITE COLOR
±1% @ 68° F					



**Den Hartog**  
INDUSTRIES, INC.

Ace Roto-Mold Injection Molding Blow Molding Sowjoy  
4010 HOSPERS DRIVE S. BOX 425, HOSPERS, IOWA 51238-0425

DESCRIPTION	BLOW-MOLDED 3.5" GROOVE BACK CUSHION - 2 FEET LONG	
SCALE	N.S.	PART NO. DCBM2-3.50