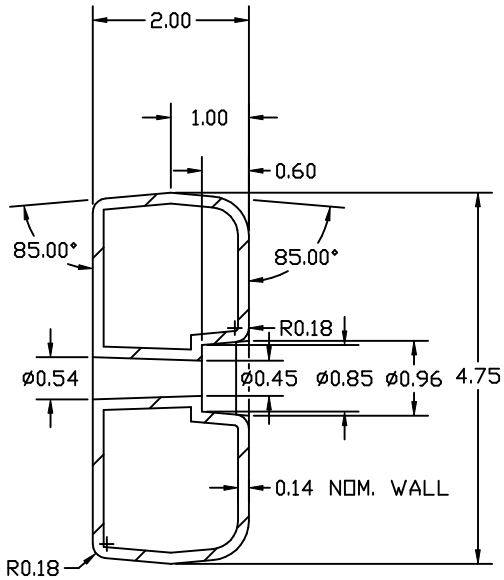


© DEN HARTOG INDUSTRIES, INC.

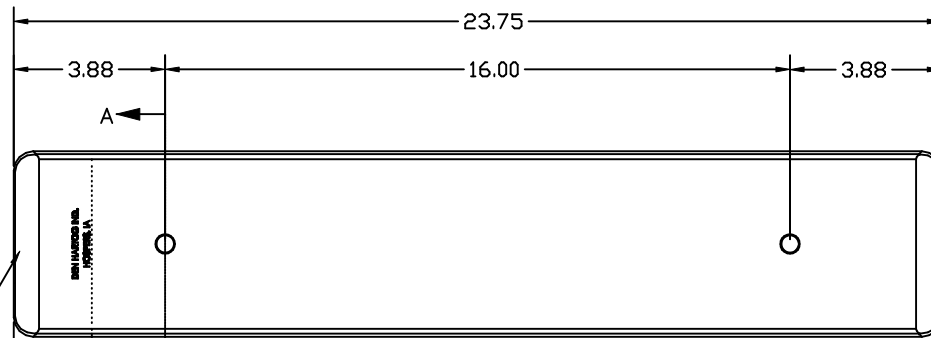
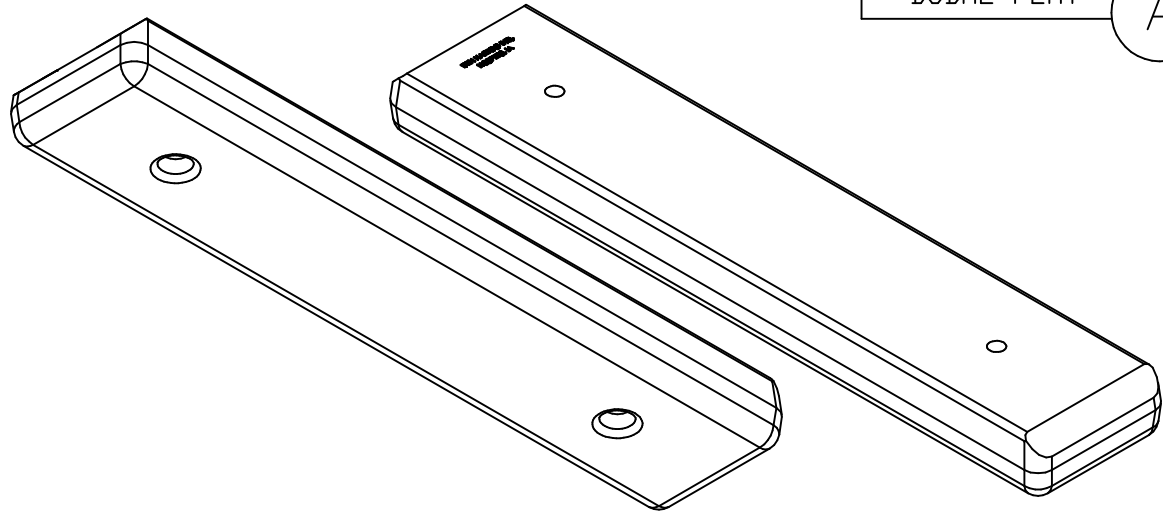
Copyright. All information furnished within this document, electronic file or design correspondence is the property of Den Hartog Industries, Inc. and shall not be used, disclosed to others or copied without the expressed written consent of Den Hartog Industries, Inc.

DCBM2-FLAT

A

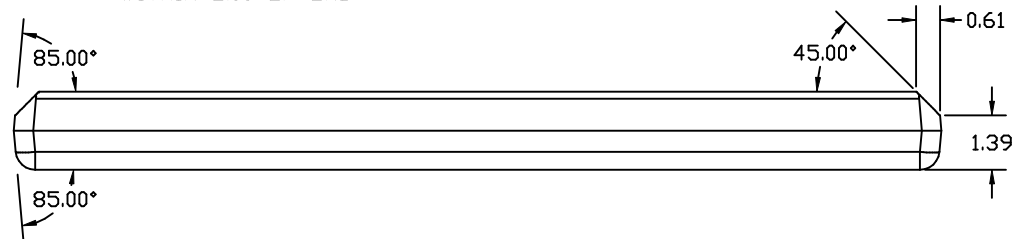
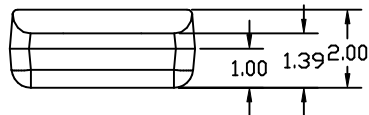


A-A



TEXT: 0.015" RAISED

TEXT TO BE WITHIN 2.00 OF END



ALL RADII 0.50 UNLESS SPECIFIED

		DRAWN / DATE NVE 5/25/06		MATERIAL	
		APPRD. / DATE ADH 11/8/07		④ 80007=80% 80001=20%	
A	MATERIALS IDENTIFIED, DRAWING TEMPLATE UPDATED	ADH 9/14/09	1931		
REV	DESCRIPTION	BY / DATE	CCN		
ALL DIMENSIONS ARE IN DECIMAL INCHES TOLERANCES UNLESS OTHERWISE SPECIFIED		THIRD ANGLE PROJECTION ANSI 14.5M		SHOT WEIGHT: 1.67 LBS.	
POLYETHYLENE		METAL DECIMAL ± .125" FRACTION ± 1/4" ANGLE ± 1°		NOTES: 1.) NOM. WALL @ .140 2.) COMPOUNDED U.V. INHIBITOR 3.) BLACK OR WHITE COLOR	
±1% @ 68° F				FINISH:	
				<b>Den Hartog</b> INDUSTRIES, INC. Ace Roto-Mold Injection Molding Blow Molding Saw-Joy 4010 HOSPERS DRIVE S. BOX 425, HOSPERS, IOWA 51238-0425	
				DESCRIPTION BLOW-MOLDED 2" GROOVE BACK CUSHION - 2 FEET LONG	
				SCALE N.S.	PART NO. DCBM2-FLAT