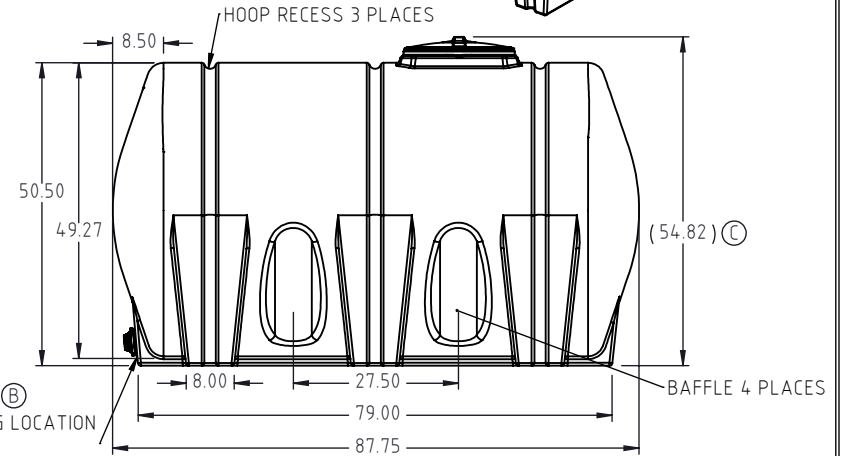
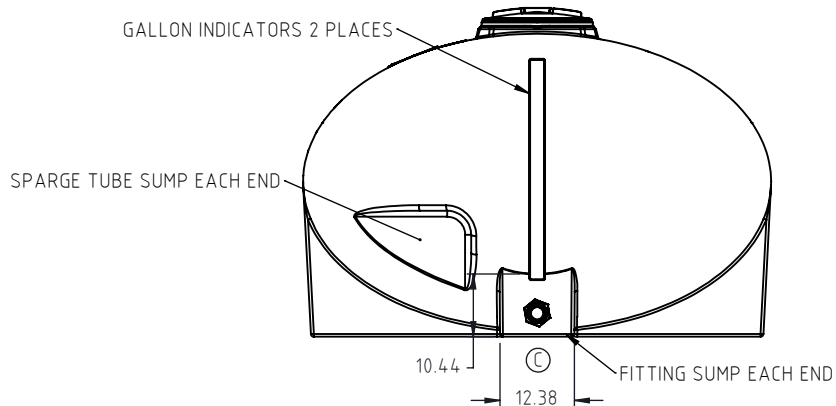
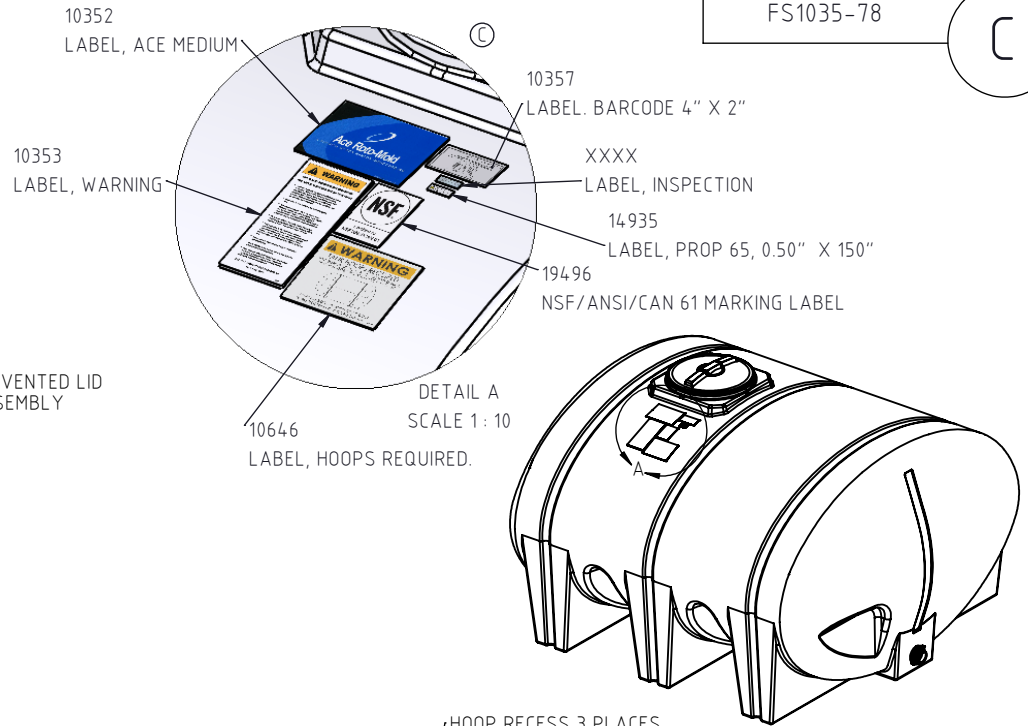
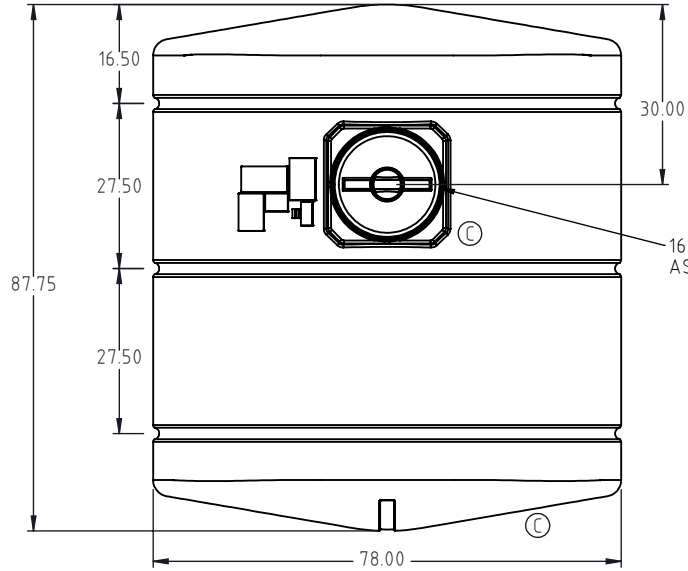


Copyright. All information furnished within this document, electronic file or design correspondence is the property of Den Hartog industries, Inc. and shall not be used, disclosed to others or copied without the expressed written consent of Den Hartog Industries, Inc.



NOTE: 3 HOOPS ARE REQUIRED ON THIS TANK

C	SUMP, END DOME SHAPE, LID AREA SHAPES/SIZES ON PRINT CORRECTED. LABEL DETAIL ADDED.	ADH	3/7/2024	4579	DRAWN / DATE	REH 9/19/2000	MATERIAL:	LLDPE
B	SPECIFIC FITTING NUMBER REMOVED.	ADH	10/11/2017	3445	APPRD. / DATE	REH 9/19/2000		
A	UPDATE WEIGHT WAS 280 LBS. DRAWING TEMPLATE UPDATED	DHJ	2/1/2012	2367				
REV.	DESCRIPTION	BY	DATE	CCN				
ALL DIMENSIONS ARE IN DECIMAL INCHES TOLERANCES UNLESS OTHERWISE SPECIFIED		THIRD ANGLE PROJECTION ANSI 14.5M			SHOT WEIGHT: 290 LBS.		NOTES:	
POLYETHYLENE		METAL			SHIPPING WEIGHT: 292 LBS.		NOMINAL WALL THICKNESS: 0.375"	
±1% @ 68° F		DECIMAL ± .125" FRACTION ± 1/4" ANGLE ± 1°			FINISH:			



Den Hartog INDUSTRIES, INC.

Ace Roto-Mold • Injection Molding • Blow Molding • Sowjoy
4010 HOSPERS DRIVE S. BOX 425, HOSPERS, IOWA 51238-0425

DESCRIPTION		1035 GALLON ELLIPTICAL LEG TANK.	
SCALE	N.S.	PART NO.	FS1035-78
		SHEET	1 OF 1