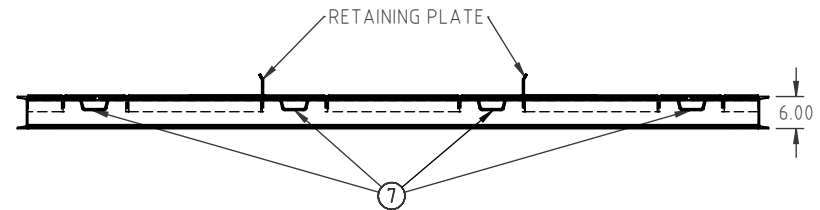
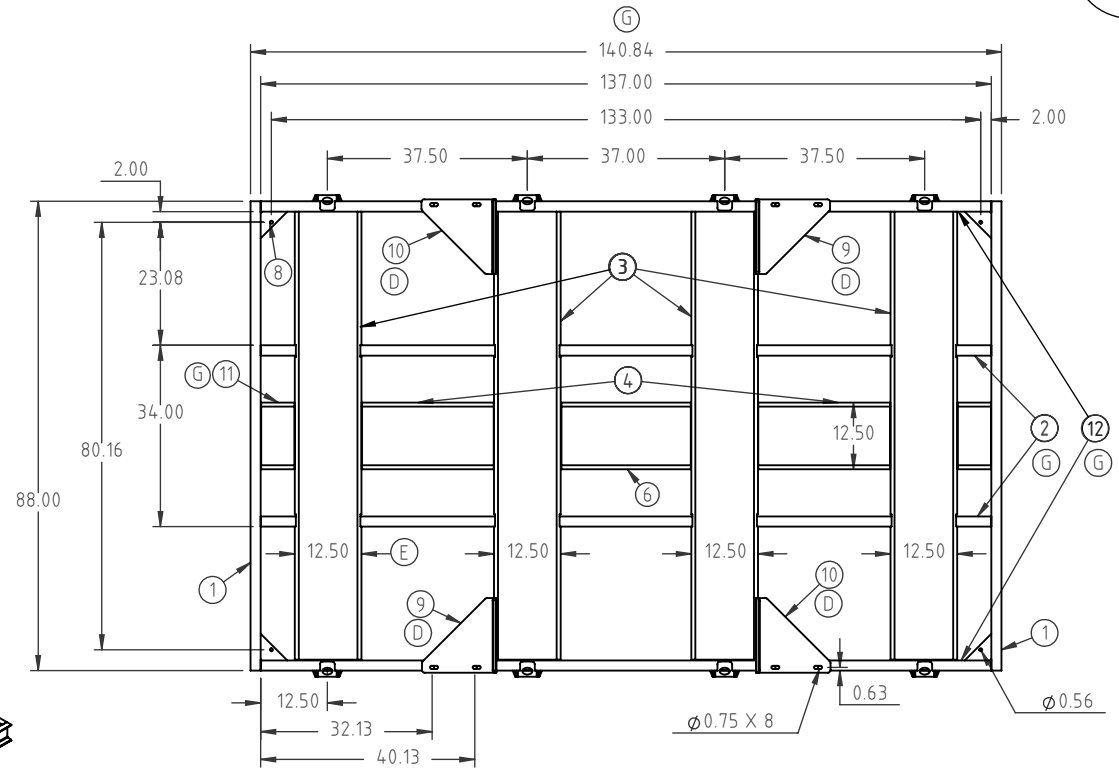
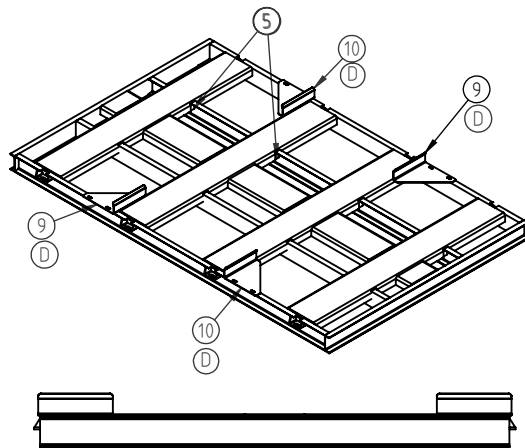


Copyright. All information furnished within this document, electronic file or design correspondence is the property of Den Hartog industries, Inc. and shall not be used, disclosed to others or copied without the expressed written consent of Den Hartog Industries, Inc.

KEY	PART NUMBER	DESCRIPTION	QTY.
1	FS2350/3250-SK-1	END CHANNEL	2
2	FS2350-3250-SK-2	INNER CHANNEL	2
3	FS2350-3250-SK-3	FORMED SUPPORT CHANNEL	4
4	FS2350-3250-SK-4	INNER FORMED CHANNEL	2
5	FS2350/3250-SK-5	FILLER PLATE	16
6	FS2350-3250-SK-6	MIDDLE FORMED CHANNEL	1
7	SJ19121	BRACKET	8
8	12411	5" X 5" GUSSET	4
9	FS10026	RETAINING PLATE-RIGHT	2
10	FS10027	RETAINING PLATE-LEFT	2
11	FS2350-3250-SK-11	END FORMED CHANNEL	2
12	FS2350/3250-SK-12	OUTER CHANNEL	2

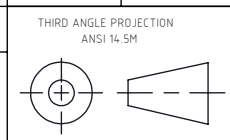


G	SKID SHORTENED BY 5", DRAWING TEMPLATE/COMPONENT TABLE UPDATED	ADH 5/4/10	2028
F	COMPONENT INFORMATION ADDED TO TABLE. DRAWING TEMPLATE UPDATED.	ADH 3/27/09	CCN1828
E	CORRECTED DIMENSION	ADH 11/2/07	CCN1496
D	ADDED # 9 & 10 BOM KEYS	ADH 8/30/07	CCN1449
C	ADD 2750	DHJ 1/8/07	
B	ADD BILL OF MATERIALS	NVE 8/1/06	
A	FINALIZE READY FOR PRODUCTION	2/10/05	
REV	DESCRIPTION	BY / DATE	CCN


DRAWN / DATE	MATERIAL
DHJ 12/21/04	
APPRD. / DATE	
ADH 11/2/07	

ALL DIMENSIONS ARE IN DECIMAL INCHES
TOLERANCES UNLESS OTHERWISE SPECIFIED

POLYETHYLENE
±1% @ 68°F



SHOT WEIGHT:	NOTES:
SHIPPING WEIGHT:	
1078.00 LBS	
FINISH:	
BLACK POWDER COAT	



Den Hartog

INDUSTRIES, INC.

Ace Roto-Mold Injection Molding Blow Molding Sowjoy

4010 HOSPERS DRIVE S. BOX 425, HOSPERS, IOWA 51238-0421

DESCRIPTION	SKID FOR 2350 & 2750 & 3250 LEG TANK	
SCALE	N.S.	PART NO. FS2350/3250-SK