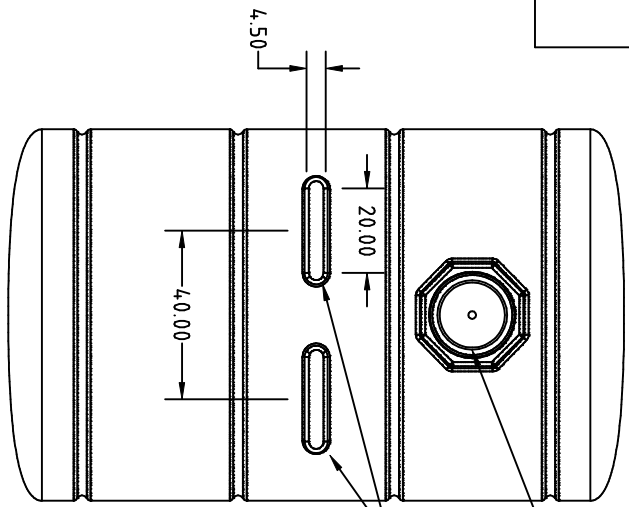


PROPRIETARY DATA
 PROPERTY OF DHJ, INC. INFORMATION FURNISHED HEREIN IS THE PROPERTY OF DHJ, INC. AND SHALL NOT BE USED, DISCLOSED TO OTHERS, OR COPIED WITHOUT THE EXPRESSED WRITTEN CONSENT OF DHJ, INC. ALL RIGHTS RESERVED.

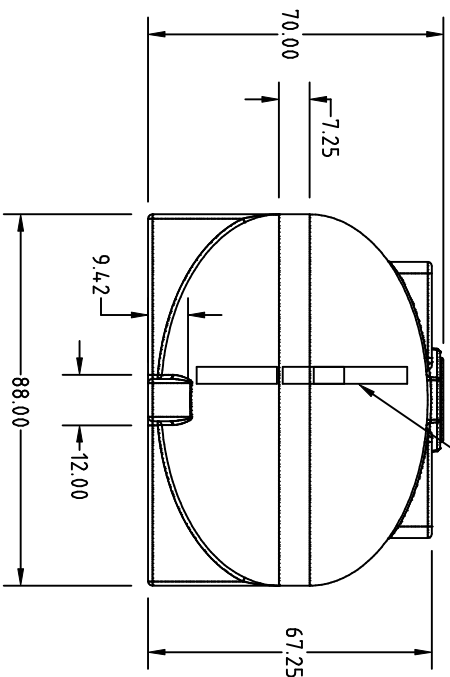
FS2750-88

B

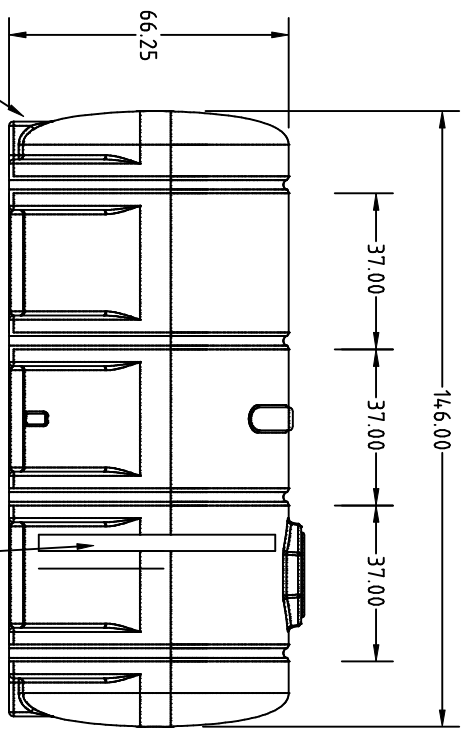


10528 16" LID
 10534 LANYARD

INSTALL 4 EACH FS2750-BAF BAFFLES HERE



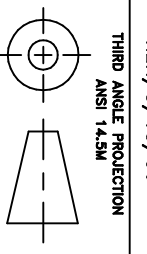
GALLON MARKERS HERE



STANDARD 2" FITTING

GALLON MARKERS HERE

REV		DESCRIPTION	DATE	APPRD	DRAWN / DATE		MATERIAL / SHOT WEIGHT		CLIENT / DESCRIPTION			
B		UPDATED ADDRESS AND TOLERANCE	3/3/09	REH	DHJ/3/13/06		M111	M134	U625	P938	ACE ROTO-MOLD A DIVISION OF DEN HARTOG INDUSTRIES, INC. 4010 HOSPERS DRIVE SOUTH, BOX 425, HOSPERS, IA 51238	
A		CORRECTED PART NO.	1/8/07	DHJ	APPRD. / DATE		1060					
REV		DESCRIPTION	DATE	APPRD	REH/3/13/06						SCALE	PART NO.
											N.S.	FS2750-88



- THIRD ANGLE PROJECTION
 ANSI 14.5M
- NOTES:
 1. .450 NOMINAL WALL
 2. BLUE, BLACK, WHITE
 OR YELLOW COLOR

ALL DIMENSIONS ARE IN DECIMAL INCHES
 TOLERANCES UNLESS OTHERWISE SPECIFIED
 + 1% @ 68° F

ACE 2750 GALLON ELLIPTICAL LEG TANK