

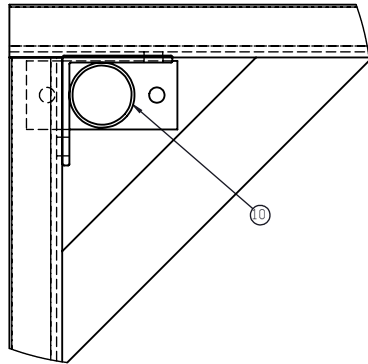
© DEN HARTOG INDUSTRIES, INC.

Copyright. All information furnished within this document, electronic file or design correspondence is the property of Den Hartog Industries, Inc. and shall not be used, disclosed to others or copied without the expressed written consent of Den Hartog Industries, Inc.

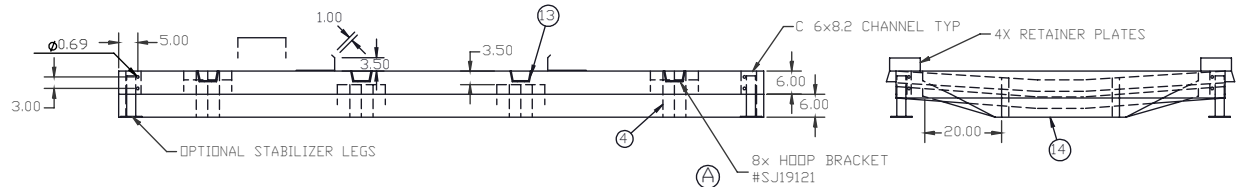
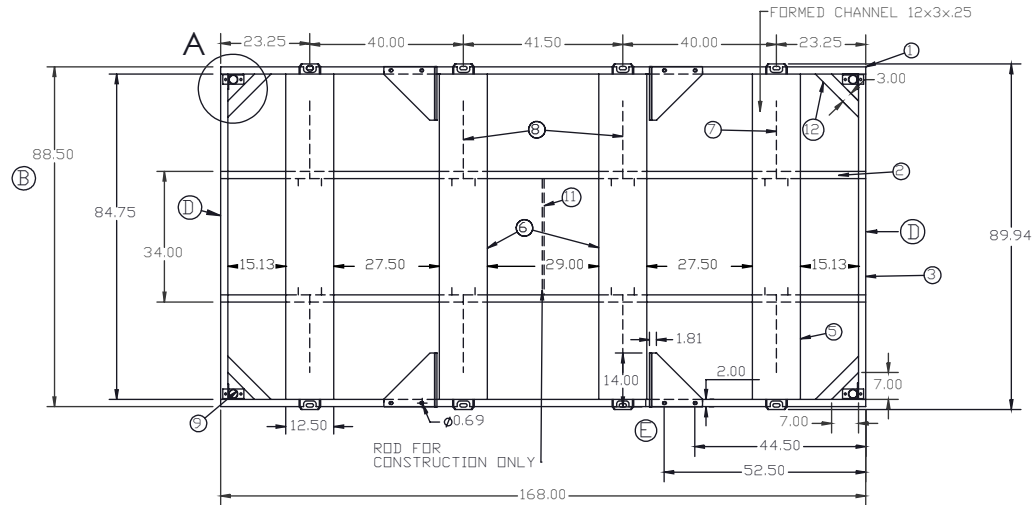
FS3200-SK

F

KEY	PART NUMBER	MATERIAL	DESCRIPTION	QTY.
1	FS3200-SK-1	C06X82	6" CHANNEL	2 @ 168"(336 IN)
2	FS3200-SK-2	C06X82	6" CHANNEL	2 @ 168"(336 IN)
3	FS3200-SK-3	C06X82	6" CHANNEL	2 @ 84.75"(169.5 IN)
4	FS3200-SK-4	C06X82	6" CHANNEL	4 @ 3.87"(31 IN)
5	FS3200-SK-5	S-2500	1/4" SHEET	2 @ 18" X 84.88"(3055.50 SI)
6	FS3200-SK-6	S-2500	1/4" SHEET	2 @ 18" X 84.88"(3055.50 SI)
7	FS3200-SK-7	S-2500	1/4" SHEET	4 @ 9.50" X 20"(760 SI)
8	FS3200-SK-8	S-2500	1/4" SHEET	4 @ 5.50" X 20"(440 SI)
9	12677	12677	LEFT LEG	2
10	12678	12678	RIGHT LEG	2
11	FS3200-SK-12	R05000	ROD, 1/2"	33.63 IN
12	FS3200-SK-13	B02500X30000	FLAT, 1/4"X3"	4 @ 16"(64 IN)
13	SJ19121	S-3750	HOOP BRACKET	8
14	12455	2-2500	CROSSMEMBER	2 @ 8" X 33.62"(560 SI)



DETAIL A  
SCALE 1 : 7



F	TABLE ADDED TO DRAWING. LEGS GIVEN SEPERATE P.N.'S. DRAWING TEMPLATE UPDATED.	ADH 3/27/09	1828
E	RETAINING PLATE/HOLES UPDATED	ADH 4/10/08	
D	12455 ADDED	REH 4/16/07	1295

C	TOLERANCE WAS 1% @ 68°F	GWC 3/19/07		DRAWN / DATE	MATERIAL
B	CHANGE WIDTH	5/5/03		DHJ/1/6/03	
A	ADD HOOP BRACKET	5/5/03		APPRD. / DATE	
REV	DESCRIPTION	BY / DATE	CCN	REH 4/16/07	

ALL DIMENSIONS ARE IN DECIMAL INCHES TOLERANCES UNLESS OTHERWISE SPECIFIED		THIRD ANGLE PROJECTION ANSI 14.5M	SHOT WEIGHT:	NOTES:
POLYETHYLENE ±1% @ 68°F	METAL DECIMAL ± .125" FRACTION ± 1/4" ANGLE ± 1°		SHIPPING WEIGHT:	
			FINISH:	



**Den Hartog**  
INDUSTRIES, INC.

Ace Roto-Mold Injection Molding Blow Molding Sowjoy  
4010 HOSPERS DRIVE S. BOX 425, HOSPERS, IOWA 51238-0421

DESCRIPTION	3200 GALLON TANK SKID
SCALE	N.S.
PART NO.	FS3200-SK