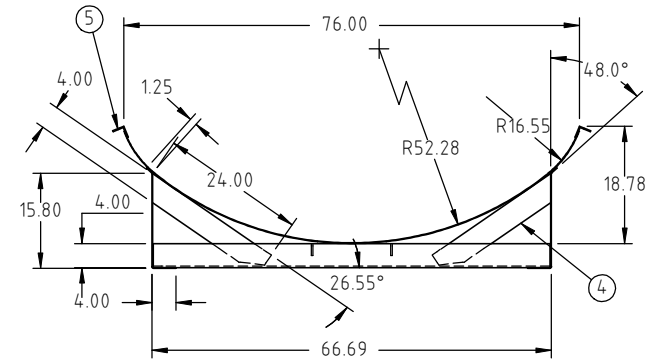
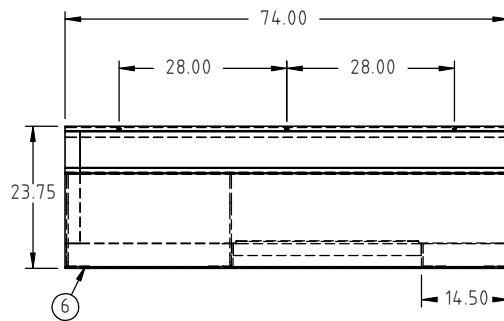
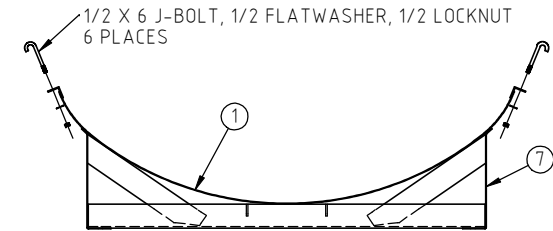
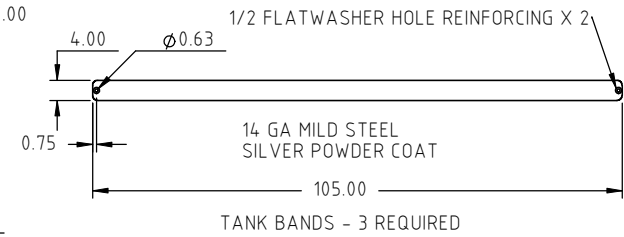
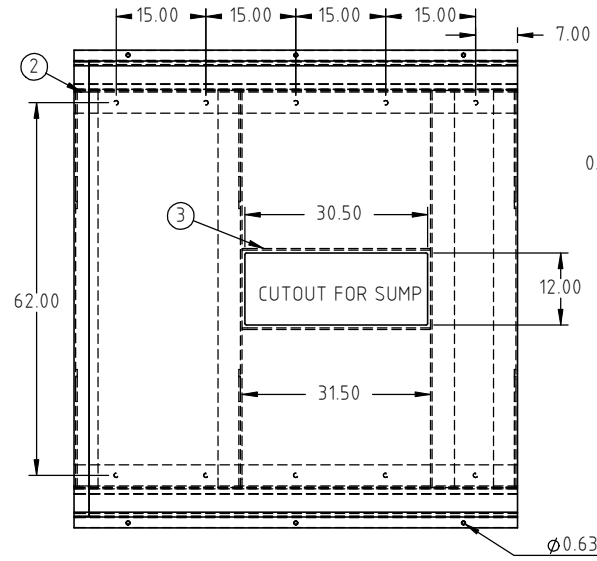


Copyright. All information furnished within this document, electronic file or design correspondence is the property of Den Hartog industries, Inc. and shall not be used, disclosed to others or copied without the expressed written consent of Den Hartog Industries, Inc.

KEY	PART NUMBER	DESCRIPTION	QTY.
1	HE1000-C-1	PAN	1
2	HE1000-C-2	PAN STRIP	1
3	HE1000-C-3	BASE STRAP	2
4	HE1000-C-4	PAN SUPPORT STRAP	6
5	HE1000-C-5	ANGLE STEEL	2
6	HE1000-C-6	BASE ANGLE STEEL	4
7	SJ17011	SIDE PANEL	2



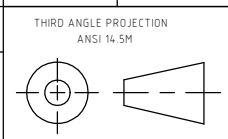
G	DRAWING TABLE LAYOUT/TEMPLATE UPDATED WEIGHT AND FINISH ADDED.	ADH 7/13/10	2056
F	TOLERANCE WAS .5% @ 68°F	GWC 3/8/07	
E	CHANGE BAND TO MILD	8/9/06	
D	VERIFY DIMENSIONS	1/5/06	
C	ENLARGE SUMP CUTOUT 1X1	9/15/05	
B	LENGTHEN BY 2 IN	5/25/05	
A	ENLARGE SUMP CUTOUT	5/23/05	
REV	DESCRIPTION	BY / DATE	CCN

DRAWN / DATE	MATERIAL
ADH 7/24/07	
APPRD. / DATE	
REH 10/5/07	

ALL DIMENSIONS ARE IN DECIMAL INCHES TOLERANCES UNLESS OTHERWISE SPECIFIED

POLYETHYLENE METAL DECIMAL ± .125" FRACTION ± 1/4" ANGLE ± 1°

±1% @ 68°F



SHOT WEIGHT:	NOTES:
SHIPPING WEIGHT: 515.00 LBS	
FINISH: POWDER COATING, BLACK TILE, 40012	



Den Hartog
INDUSTRIES, INC.

Ace Roto-Mold Injection Molding Blow Molding Sowjoy

4010 HOSPERS DRIVE S. BOX 425, HOSPERS, IOWA 51238-0425

DESCRIPTION	ACE 1000 GALLON ELLIPTICAL CRADLE	
SCALE	N.S.	PART NO. HE1000-C