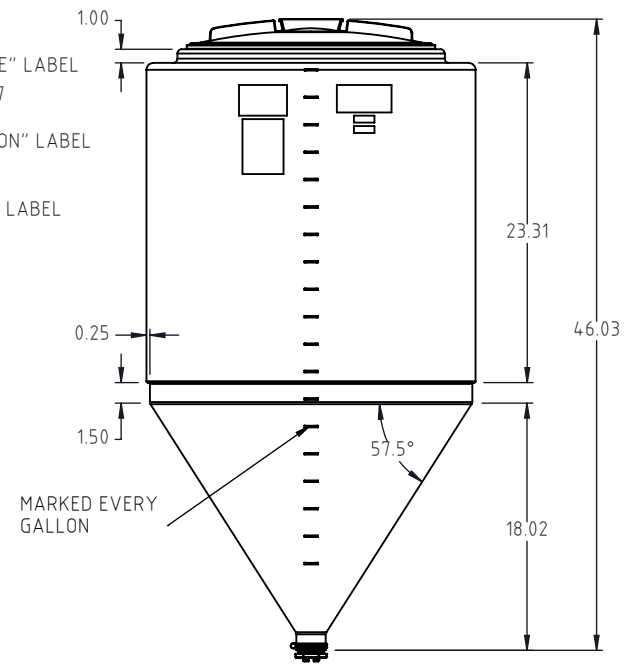
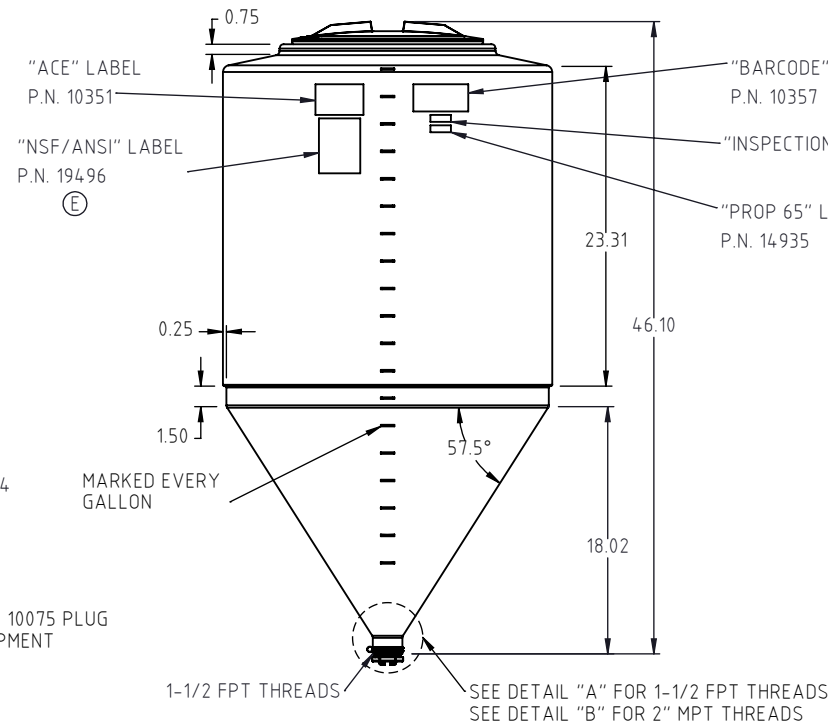
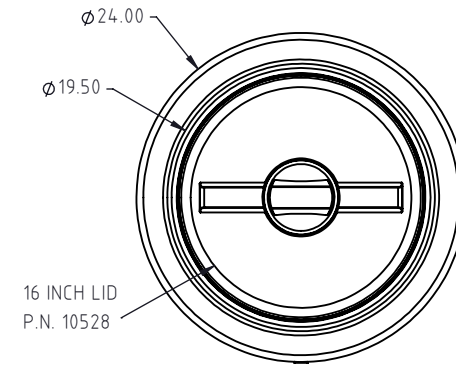
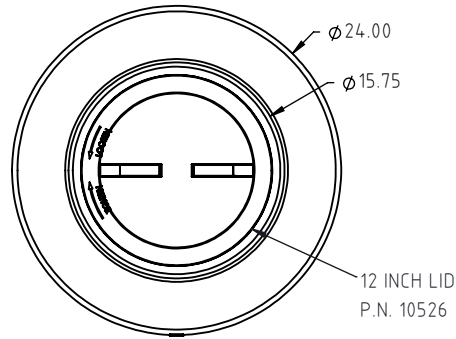
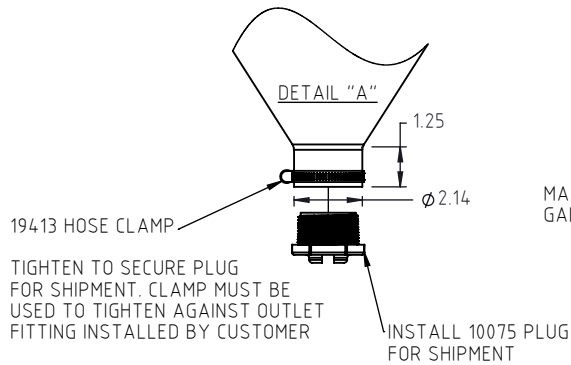
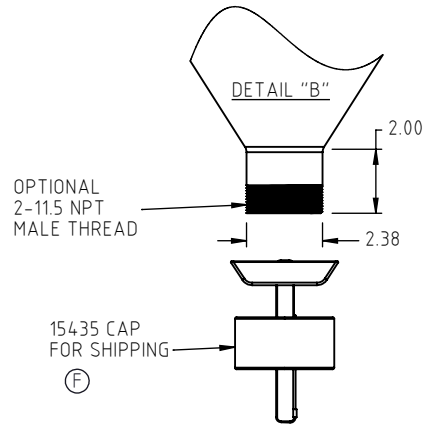

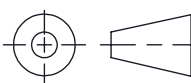


Copyright. All information furnished within this document, electronic file or design correspondence is the property of Den Hartog Industries, Inc. and shall not be used, disclosed to others or copied without the expressed written consent of Den Hartog Industries, Inc.



F	15435 WAS SC2.00RD-4 CAP.	BES	10/14/2024	4653	DRAWN / DATE	MATERIAL :
E	UPDATED SHEET FORMAT, ADD 16IN LID OPTION & ADDED LABELS.	SRA	8/23/24	4542	DHJ 4/10/2005	LLDPE
D	55 WAS 60	ADH	12/11/2013	2755	APPRD. / DATE	(E)  Den Hartog INDUSTRIES, INC. Ace Roto-Mold • Injection Molding • Blow Molding • Sowjoy 4010 HOSPERS DRIVE S. BOX 425, HOSPERS, IOWA 51238-0425
REV.	DESCRIPTION	BY	DATE	CCN	ADH 3/14/2006	
ALL DIMENSIONS ARE IN DECIMAL INCHES TOLERANCES UNLESS OTHERWISE SPECIFIED		THIRD ANGLE PROJECTION ANSI 14.5M		SHOT WEIGHT: 22.0 LBS	NOTES:	
POLYETHYLENE	METAL DECIMAL ± .125" FRACTION ± 1/4" ANGLE ± 1°			SHIPPING WEIGHT: 24.0 LBS	1.) 0.22" NOM. WALL	
±1% @ 68°F				FINISH:		

DESCRIPTION		
55 GALLON FULL DRAIN INDUCTOR TANK		
SCALE	PART NO.	SHEET
N.S.	INFD55-24	1 OF 1