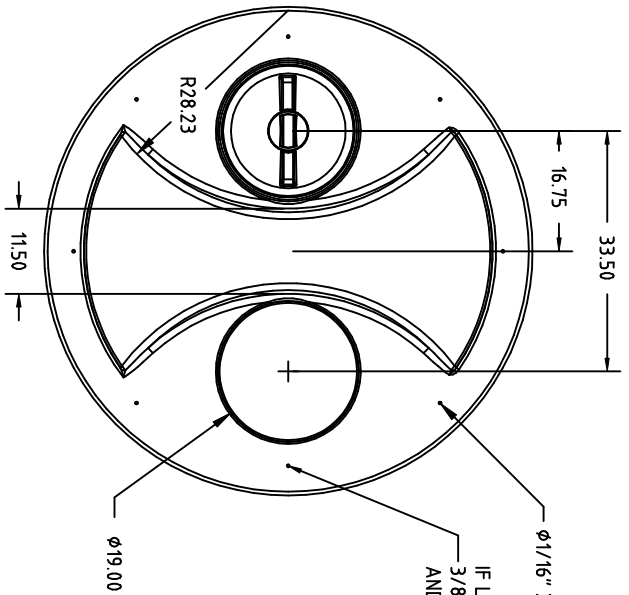
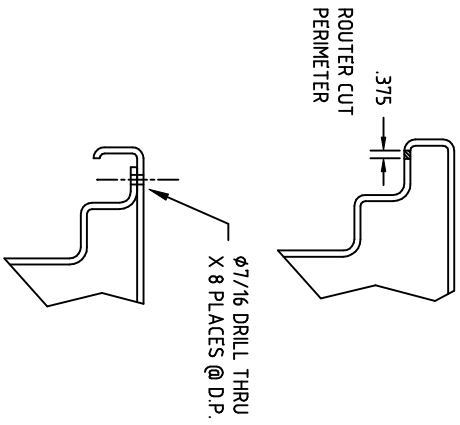


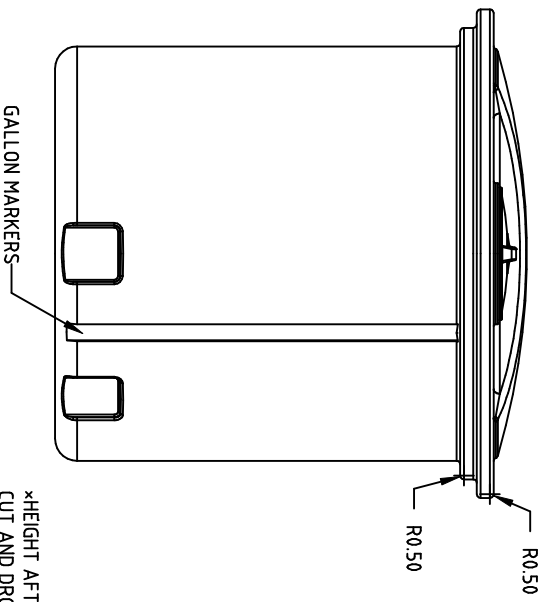
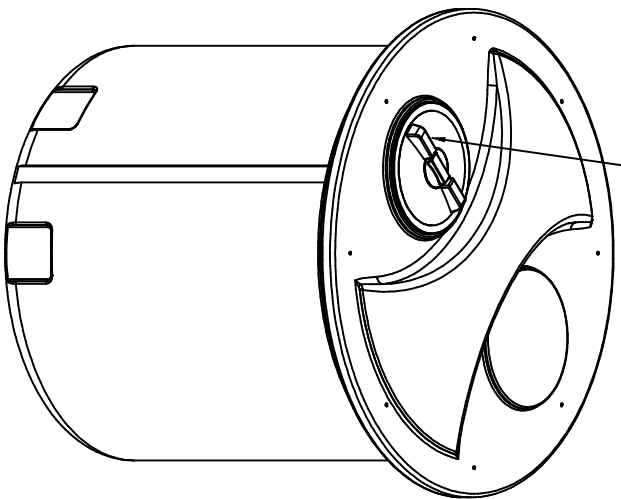
Copyright: All information furnished within this document, electronic file or design correspondence is the property of Den Hartog Industries, Inc. and shall not be used, disclosed to others or copied without the expressed written consent of Den Hartog Industries, Inc.

LID CUT AND DROP DETAIL

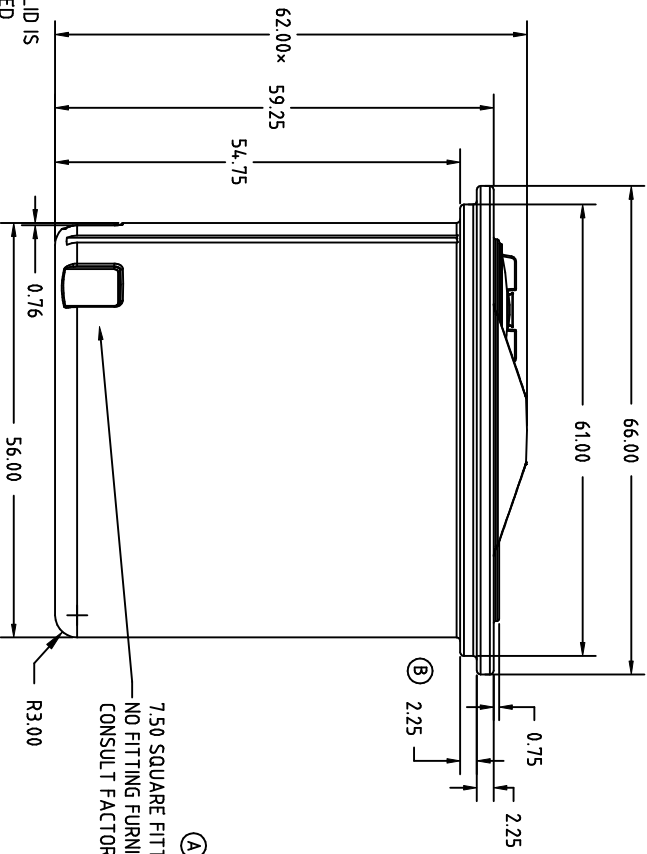


IF LID IS TO BE RE-ATTACHED, USE 3/8-16 X 1-1/4 HEX BOLT, 2 FLATWASHERS, AND HEX NUT AT EACH OF 8 HOLES

16" VENTED LID ASSEMBLY



*HEIGHT AFTER LID IS CUT AND DROPPED



7.50 SQUARE FITTING SUMP 2 PLACES
NO FITTING FURNISHED WITH STANDARD TANK.
CONSULT FACTORY REGARDING FITTING OPTIONS.

| REV | DESCRIPTION | DATE | APPRO | REH | DATE |
|-----|-------------------------|---------|-------|-----|------|
| C | 150 WAS 14.5 CCN 1795 | 2/6/09 | | REH | |
| B | MODIFIED RIM DESIGN | 5/12/06 | | NVE | |
| A | FITTING REMOVED AS STD. | 3/20/01 | | | |

DRAWN / DATE

REH/9/18/00

MATERIAL

HOPE OR EQUIVALENT
REFERENCE MATERIAL DATA SHEET
FOR SPECIFIC PROPERTIES.

CLIENT / DESCRIPTION

ACE 500 GALLON OPEN TOP TANK



ACE ROTO-MOLD
A DIVISION OF DEN HARTOG INDUSTRIES, INC.
4010 HOSPERS DRIVE S. BOX 425, HOSPERS, IOWA 51238

SCALE

N.S.

PART NO.

OP0500-56

ALL DIMENSIONS ARE IN DECIMAL INCHES
TOLERANCES UNLESS OTHERWISE SPECIFIED

+ 1% @ 68° F

THIRD ANGLE PROJECTION
ANSI 14.5M

