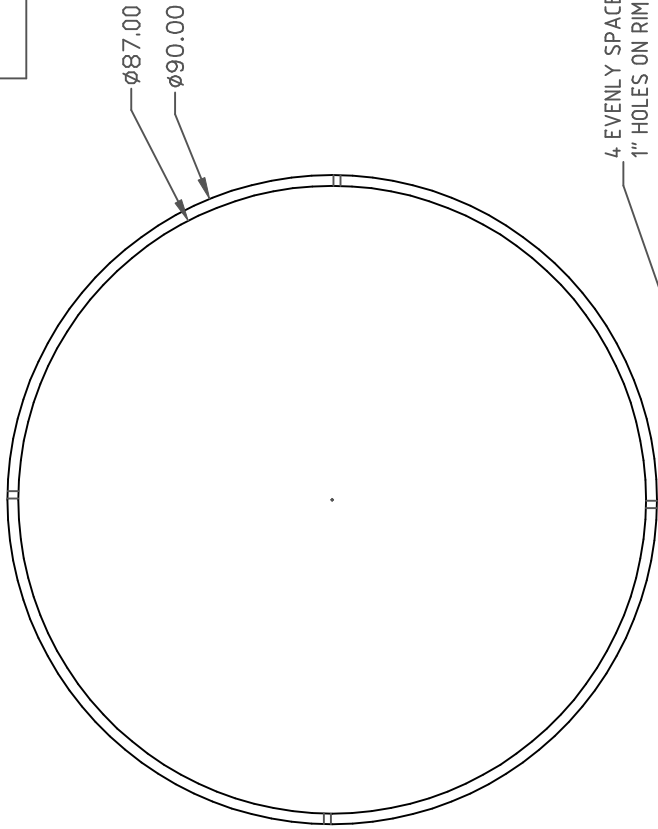


PROPRIETARY DATA

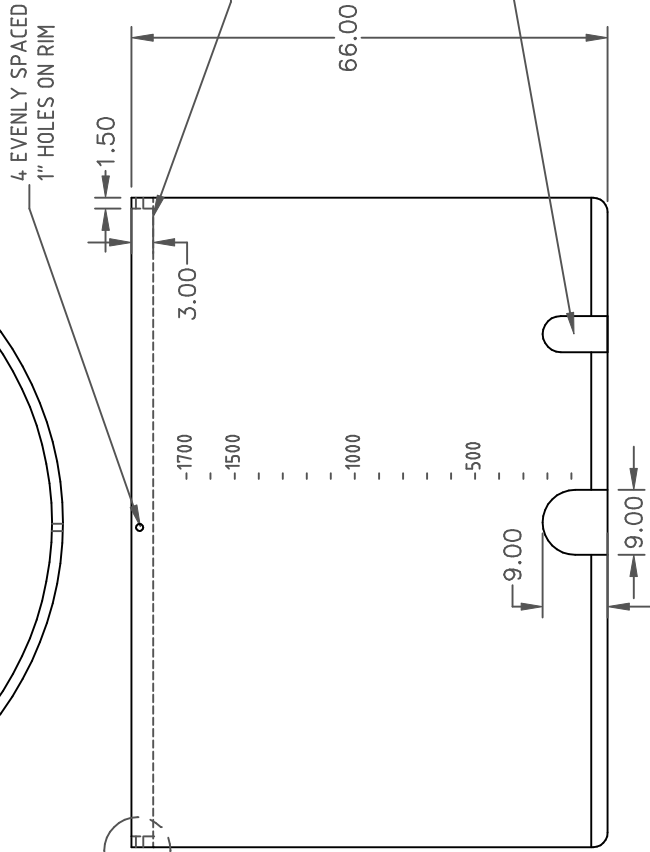
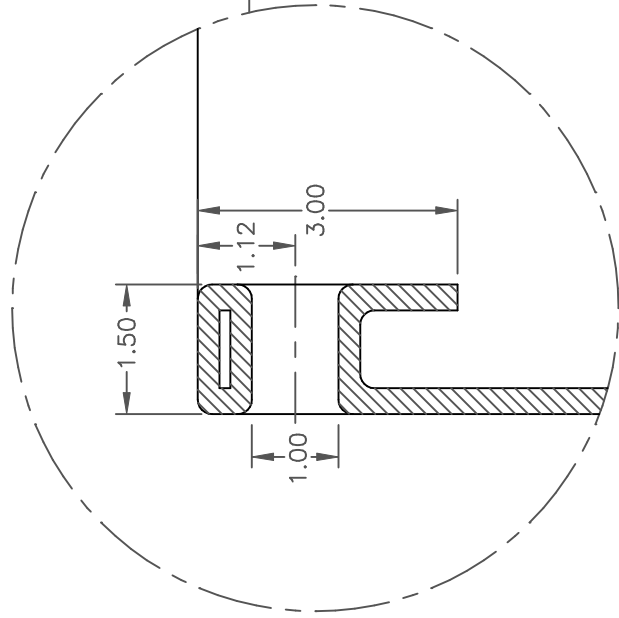
PROPERTY OF ACE ROTO-MOLD MFG. INC. INFORMATION FURNISHED HEREIN IS THE PROPERTY OF ACE ROTO-MOLD MFG. INC. AND SHALL NOT BE USED, DISCLOSED TO OTHERS, OR COPIED WITHOUT THE EXPRESSED WRITTEN CONSENT OF ACE ROTO-MOLD MFG. INC. ALL RIGHTS RESERVED.

OP1700-90

A

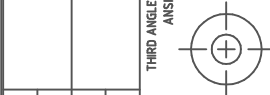


DETAIL OF RIM (A)



MATERIAL
HDPE OR EQUIVALENT
REFERENCE MATERIAL DATA SHEET
FOR SPECIFIC PROPERTIES.

NOTES:
1. .490 THICK AT FITTING
2. WHITE OR COLOR
3. SHOT WEIGHT 317 LBS.
4. SHIP WEIGHT 317 LBS.



THIRD ANGLE PROJECTION
ANSI 14.3M

REV	DESCRIPTION	DATE	APPRD	CCN
A	CLARIFY THROUGH HOLE	4/8/08	DHJ	164.3

ALL DIMENSIONS ARE IN DECIMAL INCHES
TOLERANCES UNLESS OTHERWISE SPECIFIED
± 1% @ 68° F

DRAWN / DATE	NVE 6/13/05
APPRD. / DATE	DHJ 6/22/05

CLIENT / DESCRIPTION
1700 GALLON OPEN TOP TANK

SCALE N.S.
PART NO. OP1700-90

