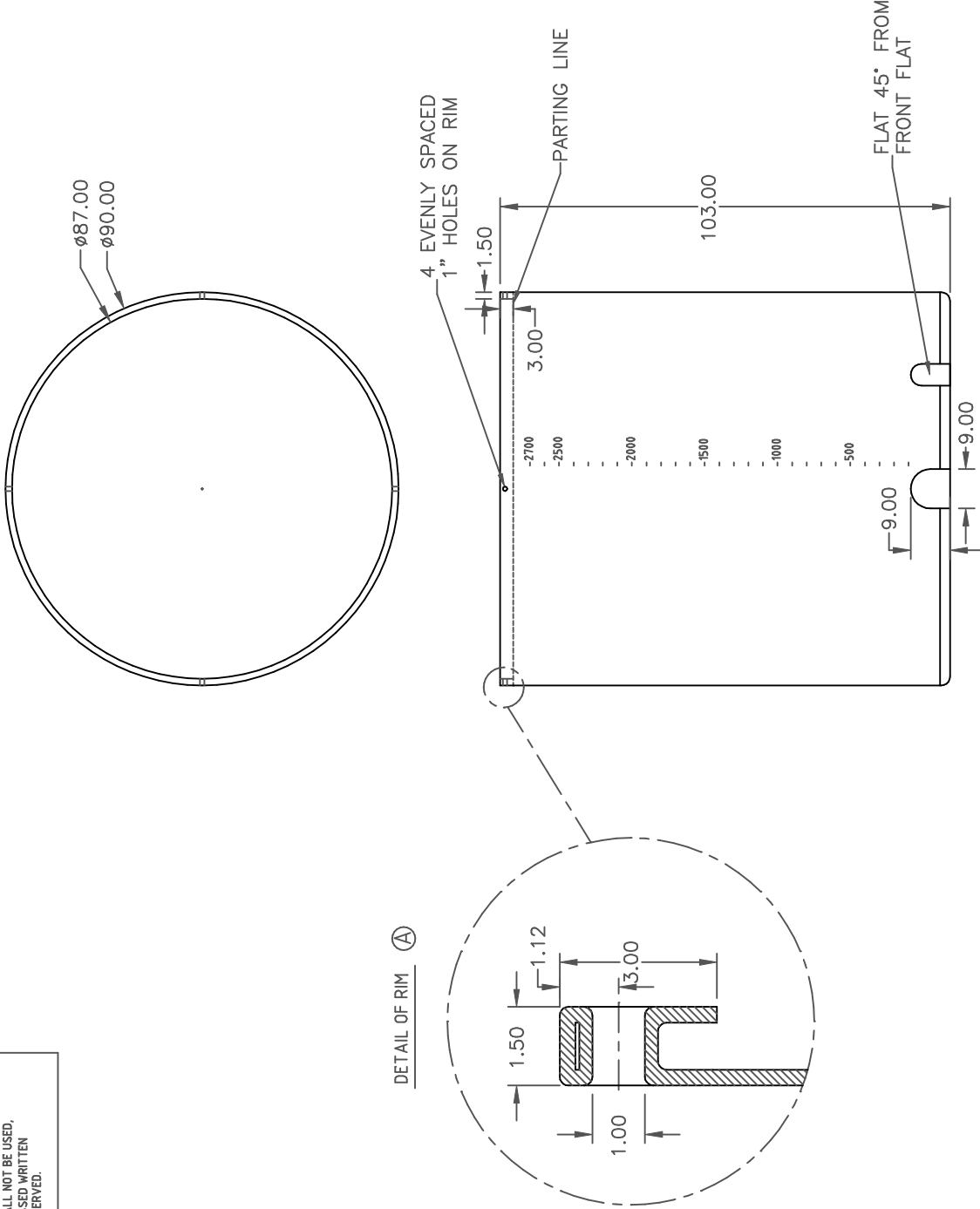


PROPRIETARY DATA

PROPERTY OF ACE ROTO-MOLD MFG. INC. INFORMATION FURNISHED HEREIN IS THE PROPERTY OF ACE ROTO-MOLD MFG. INC. AND SHALL NOT BE USED, DISCLOSED TO OTHERS, OR COPIED WITHOUT THE EXPRESSED WRITTEN CONSENT OF ACE ROTO-MOLD MFG. INC. ALL RIGHTS RESERVED.

OP2700-90

A



ACE ROTO-MOLD
A DIVISION OF DEN HARTOG INDUSTRIES, INC.
4018 HOSPERS DRIVE SOUTH, BOX 421, HOSPERS, IOWA 51238

CLIENT / DESCRIPTION
2700 GALLON OPEN TOP TANK

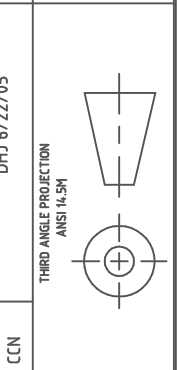
MATERIAL
HDPE OR EQUIVALENT
REFERENCE MATERIAL DATA SHEET
FOR SPECIFIC PROPERTIES.

DRAWN / DATE
NVE 6/13/05
APPRD. / DATE
DHJ 6/22/05

REV DESCRIPTION DATE APPRD CCN
A CLARIFY THROUGH HOLE 4/8/08 DHJ 1643
DESCRIPTION DATE APPRD CCN

SCALE N.S. PART NO. OP2700-90

NOTES:
1. .490 WALL THICKNES AT FLAT
2. WHITE OR COLOR
3. SHOT WEIGHT 480 LBS.
4. SHIP WEIGHT 480 LBS.



ALL DIMENSIONS ARE IN DECIMAL INCHES
TOLERANCES UNLESS OTHERWISE SPECIFIED
+ 1% @ 68° F
-