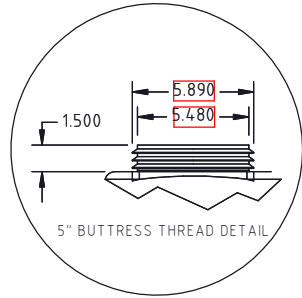


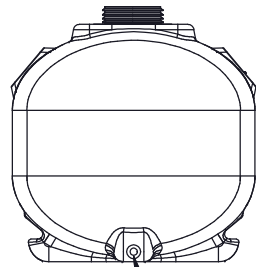
© DEN HARTOG INDUSTRIES, INC.

Copyright. All information furnished within this document, electronic file or design correspondence is the property of Den Hartog Industries, Inc. and shall not be used, disclosed to others or copied without the expressed written consent of Den Hartog Industries, Inc.

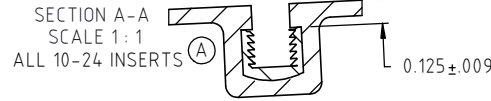
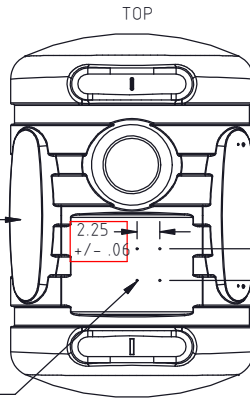
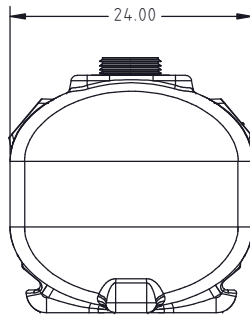


LOGO APPLICATION AREA EACH SIDE

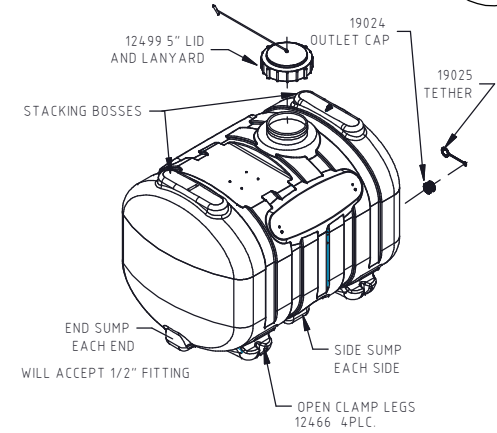
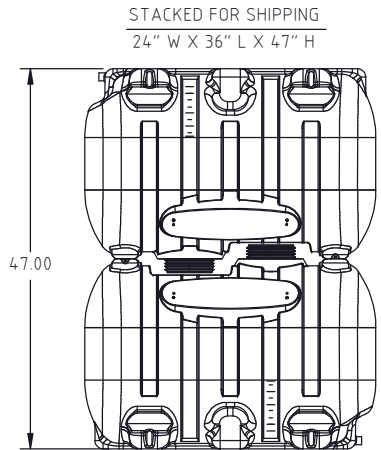
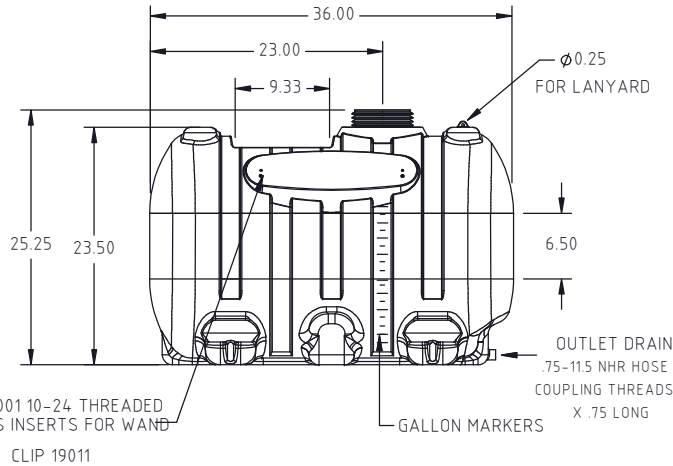
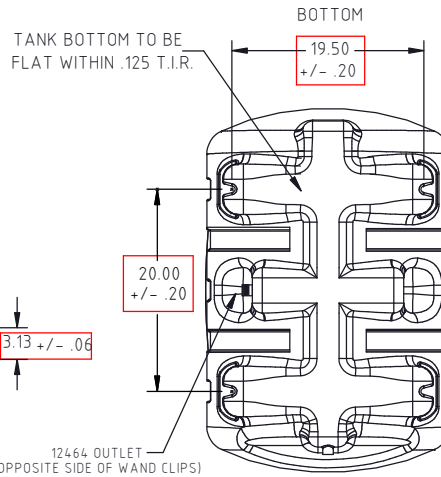
4 X 19001 10-24 THREADED BRASS INSERTS FOR PUMP



.500 / .530 BORE THRU THREADED OUTLET



EXCEPT AS NOTED TOLERANCES ARE +/- 2% OF DIMENSION NOTED



NOTE: CONTACT DHI REGARDING PRICING FOR LOOSE COMPONENTS SHOWN ABOVE.

				DRAWN / DATE REH/3/22/07	MATERIAL EQUISTAR 5704
A	INSERT DETAIL ADDED, DRAWING TEMPLATE UPDATED	ADH 4/23/13	2605	APPRO. / DATE REH/3/22/07	
REV	DESCRIPTION	BY / DATE	CCN		
ALL DIMENSIONS ARE IN DECIMAL INCHES TOLERANCES UNLESS OTHERWISE SPECIFIED		THIRD ANGLE PROJECTION ANSI 14.5M		SHOT WEIGHT: 19.00 LBS.	NOTES: 1.) WHITE OR YELLOW COLOR 2.) MIN. WALL = .095
POLYETHYLENE ±1% @ 68°F				SHIPPING WEIGHT: 21.00 LBS	FINISH:



Den Hartog INDUSTRIES, INC.

Ace Roto-Mold Injection Molding Blow Molding Sowjoy

4010 HOSPERS DRIVE S. BOX 425, HOSPERS, IOWA 51238-0425

DESCRIPTION	60 GALLON B/M APPLICATOR TANK	
SCALE	N.S.	PART NO. TANK ONLY - WHITE SB00060SW TANK ONLY - YELLOW SB00060SY