

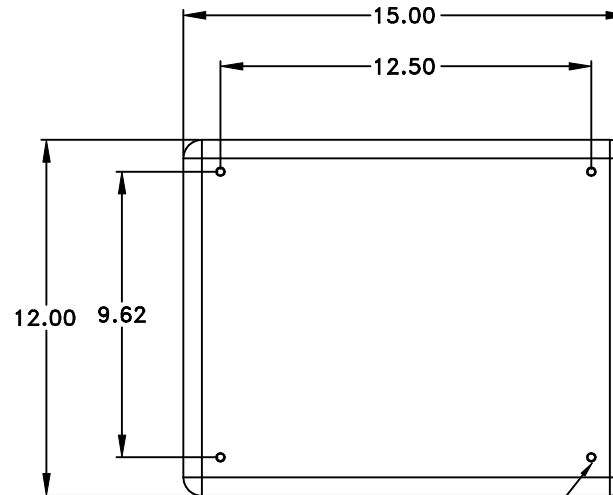
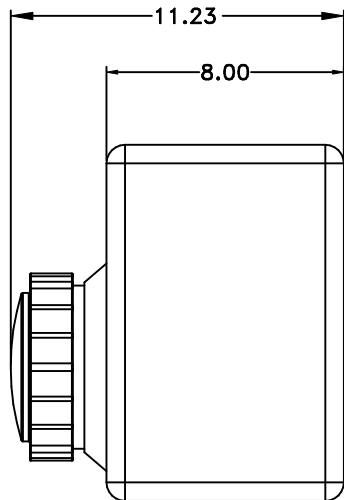
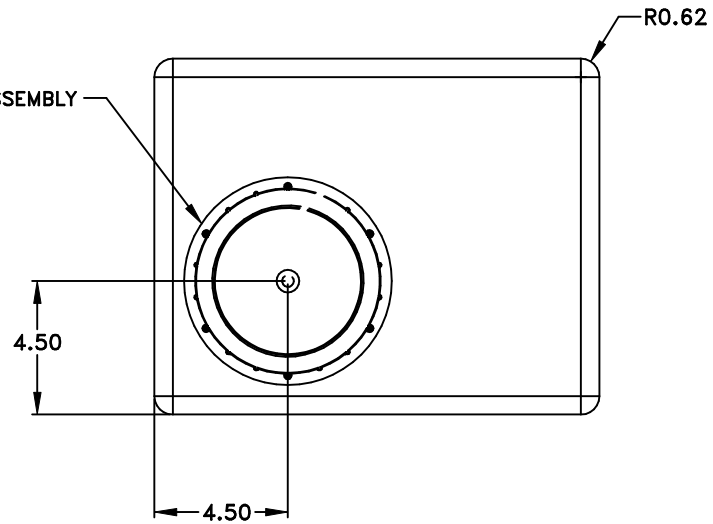
© DEN HARTOG INDUSTRIES, INC.

Copyright. All information furnished within this document, electronic file or design correspondence is the property of Den Hartog Industries, Inc. and shall not be used, disclosed to others or copied without the expressed written consent of Den Hartog Industries, Inc.

SP0006-5N

A

5" VENTED LID ASSEMBLY



.250-20 UNC X .50 DEEP THREADED INSERTS X 4

				DRAWN / DATE DHJ / 7/26/01	MATERIAL ⊗ 5 LB. MOBIL 134
A	SHOT WEIGHT CORRECTED CCN 1802	2/16/09	ADH	APPRD. / DATE REH / 7/26/01	
REV	DESCRIPTION	DATE	APPRD		
ALL DIMENSIONS ARE IN DECIMAL INCHES TOLERANCES UNLESS OTHERWISE SPECIFIED ± 1% @ 68° F				THIRD ANGLE PROJECTION ANSI 14.5M 	NOTES: 1. NATURAL COLOR 2. NOM. WALL .150



Den Hartog
INDUSTRIES, INC.
Ace Roto-Mold Injection Molding Blow Molding Sowjoy
4010 HOSPERS DRIVE S. BOX 425, HOSPERS, IOWA 51238-0421

CLIENT / DESCRIPTION	6 GAL. SPECIALTY TANK
SCALE	N.S.
PART NO.	SP0006-5N