

Copyright. All information furnished within this document, electronic file or design correspondence is the property of Den Hartog Industries, Inc. and shall not be used, disclosed to others or copied without the expressed written consent of Den Hartog Industries, Inc.

INSTALL TWO EYEBOLTS AT EACH ANCHOR LOCATION (BY CUSTOMER)

EYEBOLTS ARE TO BE ZINC PLATED AND RATED FOR THE WIRE ROPE SPECIFIED

10176 ANCHOR BLOCK WELDMENT  
4 REQUIRED

CABLE CLAMPS 2 PER CONNECTION (BY CUSTOMER)

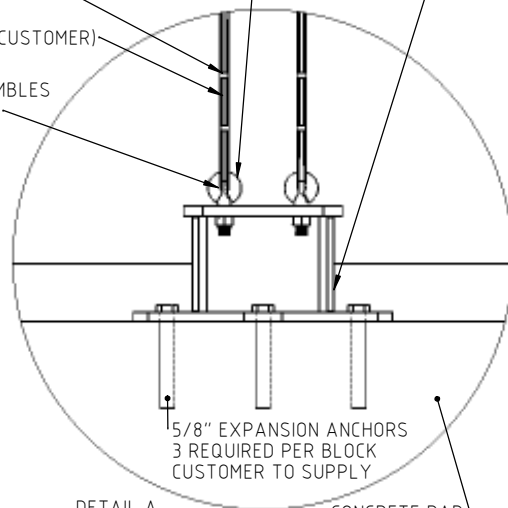
WIRE ROPE - SEE SCHEDULE FOR SIZE REQUIREMENT (CABLES BY CUSTOMER)

BE SURE TO USE CABLE THIMBLES AT ALL CONNECTION POINTS

IMPORTANT: PERIODICALLY CHECK CABLE TENSION AND ANCHOR BOLTS TO INSURE THEY HAVE NOT LOOSENED

INSULATE CABLE LOOP THRU TANK WITH HOSE SLEEVE (BY CUSTOMER)

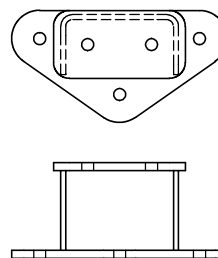
USE EYEBOLTS TO SNUG UP CABLES. DO NOT OVER TENSION



DETAIL A  
SCALE 1 : 10

CONCRETE PAD:  
BE SURE THAT PAD IS PROPERLY REINFORCED AND THICK ENOUGH FOR EXPANSION ANCHOR INSTALLATION

10176 ANCHOR BLOCK WELDMENT



1.00" SPACE BETWEEN BLOCKS AND TANK

| Tank Model  | Number Of Anchor Blocks Required | Number Of Anchor Bolts Required Per Block | V=110 MPH                                 | V=150 MPH                                 |
|-------------|----------------------------------|---|---|---|
|             |                                  |   | Required Min. Wire Rope Dia. (.250" min.) | Required Min. Wire Rope Dia. (.250" min.) |
|             | =Na                              | =Nb                                       | =Rd                                       | =Rd                                       |
| VT12500-142 | 4                                | 3   | 0.250                                     | 0.375                                     |
| VT10500-142 | 4                                | 3   | 0.250                                     | 0.250                                     |
| VT10500-142 | 4                                | 3   | 0.250                                     | 0.250                                     |
| VT9500-120  | 4                                | 3   | 0.250                                     | 0.375                                     |
| VT9150-120  | 4                                | 3   | 0.250                                     | 0.375                                     |
| VT8000-120  | 4                                | 3   | 0.250                                     | 0.250                                     |
| VT7800-120  | 4                                | 3   | 0.250                                     | 0.250                                     |
| VT7000-142  | 4                                | 3   | 0.250                                     | 0.250                                     |
| VT6500-120  | 4                                | 3   | 0.250                                     | 0.250                                     |
| VT6250-102  | 4                                | 3   | 0.250                                     | 0.250                                     |
| VT5150-102  | 4                                | 3   | 0.250                                     | 0.250                                     |
| VT5000-102  | 4                                | 3   | 0.250                                     | 0.250                                     |
| VT4200-96   | 4                                | 3   | 0.250                                     | 0.250                                     |
| VT4000-96   | 4                                | 3   | 0.250                                     | 0.250                                     |
| VT3400-102  | 4                                | 3   | 0.250                                     | 0.250                                     |
| VT3100-102  | 4                                | 3   | 0.250                                     | 0.250                                     |
| VT3000-90   | 4                                | 3   | 0.250                                     | 0.250                                     |
| VT2500-90   | 4                                | 3   | 0.250                                     | 0.250                                     |
| VT2150-102  | 4                                | 3   | 0.250                                     | 0.250                                     |
| VT2050-86   | 4                                | 3   | 0.250                                     | 0.250                                     |
| VT2000-90   | 4                                | 3   | 0.250                                     | 0.250                                     |
| VT2000-64   | 4                                | 3   | 0.250                                     | 0.250                                     |
| VT1650-85   | 4                                | 3   | 0.250                                     | 0.250                                     |
| VT1525-64   | 4                                | 3   | 0.250                                     | 0.250                                     |
| VT1500-85   | 4                                | 3   | 0.250                                     | 0.250                                     |
| VT1500-64   | 4                                | 3   | 0.250                                     | 0.250                                     |
| VT1350-85   | 4                                | 3   | 0.250                                     | 0.250                                     |
| VT1200-64   | 4                                | 3   | 0.250                                     | 0.250                                     |
| VT1050-85   | 4                                | 3   | 0.250                                     | 0.250                                     |
| VT1000-64   | 4                                | 3   | 0.250                                     | 0.250                                     |

|  |             |   |     |
|--|-------------|---|-----|
| DRAWN / DATE<br>REH/5/1/12   |             | MATERIAL  |     |
| APPRD. / DATE<br>DHJ/5/1/12  |             |   |     |
| REV  | DESCRIPTION | BY / DATE   | CCN |
| ALL DIMENSIONS ARE IN DECIMAL INCHES TOLERANCES UNLESS OTHERWISE SPECIFIED |             | THIRD ANGLE PROJECTION<br>ANSI 14.5M                      |     |
| POLYETHYLENE   |             | METAL<br>DECIMAL ± .125"<br>FRACTION ± 1/4"<br>ANGLE ± 1° |     |
| ±1% @ 68°F   |             | SHOT WEIGHT:<br>SHIPPING WEIGHT:<br>FINISH:               |     |
|  |             | NOTES:  |     |



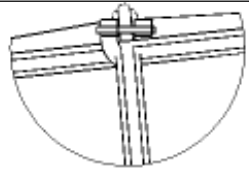
**Den Hartog**  
INDUSTRIES, INC.

Ace Roto-Mold Injection Molding Blow Molding Blowjey

4010 HOSPERS DRIVE S. BOX 425, HOSPERS, IOWA 51238-0425

|  |                   |
|--|-------------------|
| DESCRIPTION<br>ANCHOR INSTALLATION DETAILS VT5150 AND LARGER |                   |
| SCALE<br>N.S.  | PART NO.<br>10175 |

Copyright. All information furnished within this document, electronic file or design correspondence is the property of Den Hartog Industries, Inc. and shall not be used, disclosed to others or copied without the expressed written consent of Den Hartog Industries, Inc.



DETAIL B  
SCALE 1 : 3

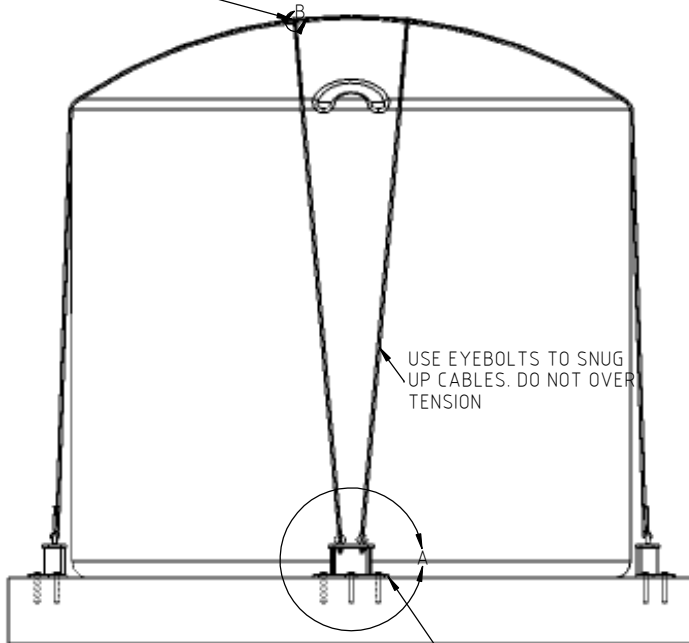
IMPORTANT: PERIODICALLY CHECK CABLE TENSION AND ANCHOR BOLTS TO INSURE THEY HAVE NOT LOOSENED

CABLE CLAMPS 2 PER CONNECTION (BY CUSTOMER)

WIRE ROPE - SEE SCHEDULE FOR SIZE REQUIREMENT (BY CUSTOMER)

BE SURE TO USE CABLE THIMBLES AT ALL CONNECTION POINTS (BY CUSTOMER)

ON DOMED TANKS W/O TIE DOWNS  
INSTALL CABLE ANCHORS TO HARNESS CABLES TOGETHER. THIS IS IMPORTANT TO PREVENT CABLES FROM SLIDING OFF TANK TOP.

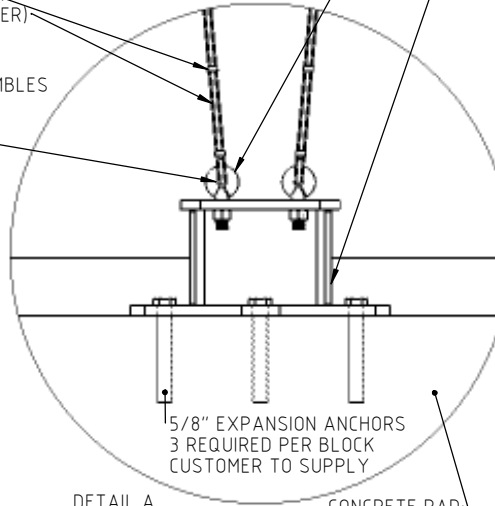


1.00" SPACE BETWEEN BLOCKS AND TANK

INSTALL TWO EYEBOLTS AT EACH ANCHOR LOCATION

EYEBOLTS ARE TO BE ZINC PLATED AND RATED FOR THE WIRE ROPE SPECIFIED (BY CUSTOMER)

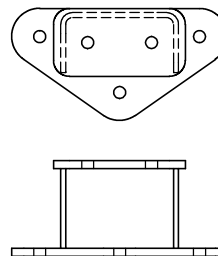
10176 ANCHOR BLOCK WELDMENT  
4 REQUIRED



DETAIL A  
SCALE 1 : 10

CONCRETE PAD: BE SURE THAT PAD IS PROPERLY REINFORCED AND THICK ENOUGH FOR EXPANSION ANCHOR INSTALLATION

10176 ANCHOR BLOCK WELDMENT



| Tank Model  | Number Of Anchor Blocks Required | Number Of Anchor Bolts Required Per Block | V=110 MPH                                 | V=150 MPH                                 |
|-------------|----------------------------------|---|---|---|
|             |                                  |   | Required Min. Wire Rope Dia. (.250" min.) | Required Min. Wire Rope Dia. (.250" min.) |
|             | =Na                              | =Nb                                       | =Rd                                       | =Rd                                       |
| VT12500-142 | 4                                | 3   | 0.250                                     | 0.375                                     |
| VT10500-142 | 4                                | 3   | 0.250                                     | 0.250                                     |
| VT10500-142 | 4                                | 3   | 0.250                                     | 0.250                                     |
| VT9500-120  | 4                                | 3   | 0.250                                     | 0.375                                     |
| VT9150-120  | 4                                | 3   | 0.250                                     | 0.375                                     |
| VT8000-120  | 4                                | 3   | 0.250                                     | 0.250                                     |
| VT7800-120  | 4                                | 3   | 0.250                                     | 0.250                                     |
| VT7000-142  | 4                                | 3   | 0.250                                     | 0.250                                     |
| VT6500-120  | 4                                | 3   | 0.250                                     | 0.250                                     |
| VT6250-102  | 4                                | 3   | 0.250                                     | 0.250                                     |
| VT5150-102  | 4                                | 3   | 0.250                                     | 0.250                                     |
| VT5000-102  | 4                                | 3   | 0.250                                     | 0.250                                     |
| VT4200-96   | 4                                | 3   | 0.250                                     | 0.250                                     |
| VT4000-96   | 4                                | 3   | 0.250                                     | 0.250                                     |
| VT3400-102  | 4                                | 3   | 0.250                                     | 0.250                                     |
| VT3100-102  | 4                                | 3   | 0.250                                     | 0.250                                     |
| VT3000-90   | 4                                | 3   | 0.250                                     | 0.250                                     |
| VT2500-90   | 4                                | 3   | 0.250                                     | 0.250                                     |
| VT2150-102  | 4                                | 3   | 0.250                                     | 0.250                                     |
| VT2050-86   | 4                                | 3   | 0.250                                     | 0.250                                     |
| VT2000-90   | 4                                | 3   | 0.250                                     | 0.250                                     |
| VT2000-64   | 4                                | 3   | 0.250                                     | 0.250                                     |
| VT1650-85   | 4                                | 3   | 0.250                                     | 0.250                                     |
| VT1525-64   | 4                                | 3   | 0.250                                     | 0.250                                     |
| VT1500-85   | 4                                | 3   | 0.250                                     | 0.250                                     |
| VT1500-64   | 4                                | 3   | 0.250                                     | 0.250                                     |
| VT1350-85   | 4                                | 3   | 0.250                                     | 0.250                                     |
| VT1200-64   | 4                                | 3   | 0.250                                     | 0.250                                     |
| VT1050-85   | 4                                | 3   | 0.250                                     | 0.250                                     |
| VT1000-64   | 4                                | 3   | 0.250                                     | 0.250                                     |

|   |             |   |     |                              |          |
|---|-------------|---|-----|------------------------------|----------|
| REV   | DESCRIPTION | BY / DATE   | CCN | DRAWN / DATE<br>REH/5/10/99  | MATERIAL |
|   |             |   |     | APPRD. / DATE<br>DHJ/5/10/99 |          |
| ALL DIMENSIONS ARE IN DECIMAL INCHES<br>TOLERANCES UNLESS OTHERWISE SPECIFIED |             | THIRD ANGLE PROJECTION<br>ANSI 14.5M                      |     | SHOT WEIGHT:                 | NOTES:   |
| POLYETHYLENE  |             | METAL<br>DECIMAL ± .125"<br>FRACTION ± 1/4"<br>ANGLE ± 1° |     | SHIPPING WEIGHT: XXXX        |          |
| ±1% @ 68°F  |             |   |     | FINISH:                      |          |



**Den Hartog**  
INDUSTRIES, INC.

Ace Roto-Mold Injection Molding Blow Molding Sowjoy

4010 HOSPERS DRIVE S. BOX 425, HOSPERS, IOWA 51238-0425

|   |                    |
|---|--------------------|
| DESCRIPTION<br>ANCHOR INSTALLATION DETAILS VT4200 AND SMALLER |                    |
| SCALE<br>N.S.   | PART NO.<br>10175A |