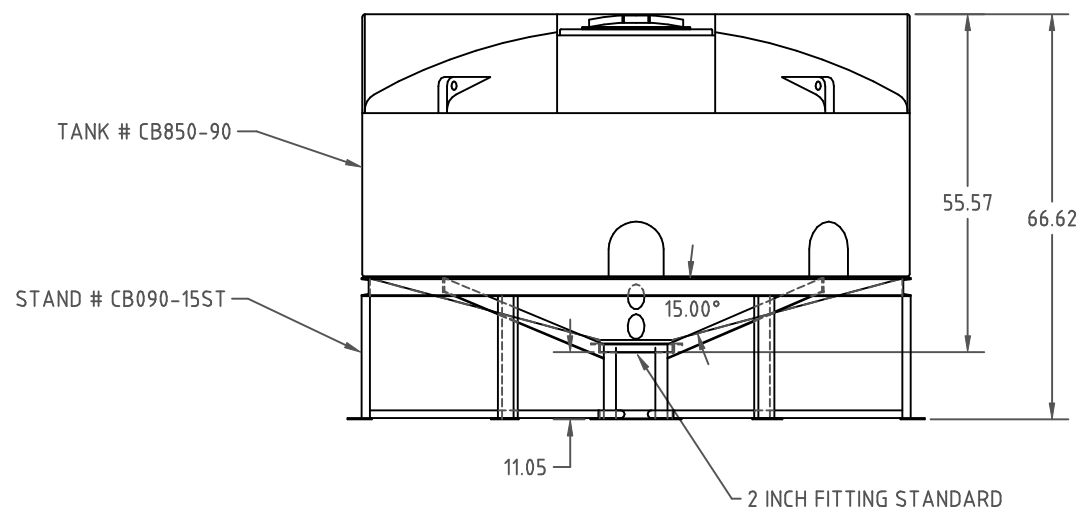
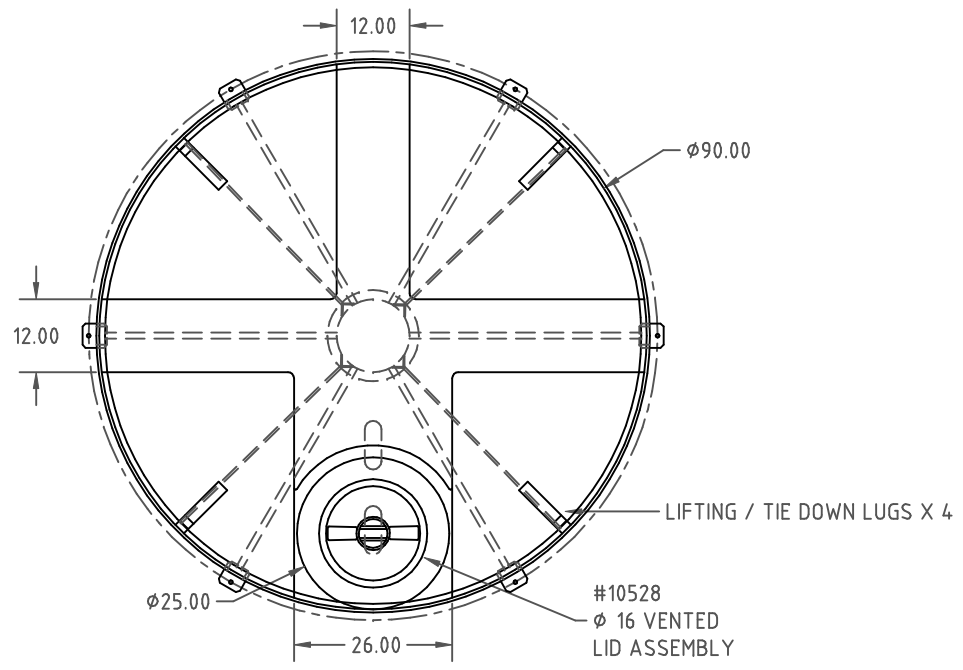


Copyright. All information furnished within this document, electronic file or design correspondence is the property of Den Hartog industries, Inc. and shall not be used, disclosed to others or copied without the expressed written consent of Den Hartog Industries, Inc.



DRAWN / DATE DHJ 3/9/11		MATERIAL TANK 10420 POLYETHYLENE	
APPRD. / DATE REH 3/9/11		STAND MILD STEEL BLACK POWDER COAT	
REV	DESCRIPTION	BY / DATE	CCN
ALL DIMENSIONS ARE IN DECIMAL INCHES TOLERANCES UNLESS OTHERWISE SPECIFIED		THIRD ANGLE PROJECTION ANSI 14.5M	
POLYETHYLENE ±1% @ 68° F		METAL DECIMAL ± .125" FRACTION ± 1/4" ANGLE ± 1°	
SHOT WEIGHT: SHIPPING WEIGHT: FINISH:		NOTES: 1. THICKNESS @ BOTTOM SIDE WALL .280	
592 LBS.			



# Den Hartog

INDUSTRIES, INC.

Ace Roto-Mold Injection Molding Blow Molding Saw-Joy  
4010 HOSPERS DRIVE S. BOX 425, HOSPERS, IOWA 51238-0425

DESCRIPTION 850 GALLON 90" DIA. X 15° CONE BOTTOM TANK W/ INDUSTRIAL TOP AND STAND	
SCALE N.S.	PART NO. CB0850-90+90-15ST