

# Ace Roto-Mold

## PRODUCT RELEASE

### DW3500-102 Double Wall Vertical Tank

*Product is a freestanding double wall vertical tank with a flat bottom for indoor or outdoor, stationary applications. Double wall construction provides containment in the event the inner or primary tank is compromised. An EPDM elastic seal is standard and seals the primary tank to the secondary tank to prevent dirt and moisture from entering the containment space between tanks.*

#### FEATURES:

- Furnished with a 16" vented lid assembly as standard.
- Three fitting flats are provided on the top for custom tank plumbing
- Tanks manufactured from high density polyethylene with U.V. stabilizers.
- Standard colors are white, yellow, and black.
- Designed for the containment of all chemicals rated for contact with polyethylene. Standard weight tank is designed for chemicals with a specific gravity of 1.7. Consult the Application Guideline Manual for known compatible chemicals and service temperatures. FDA compliant materials are available.

#### SPECIFICATIONS:

Overall Dimensions: 102" Diameter x 164" Tall

Shipping Weight : 1707 lbs.

**Dualine**  
BY DEN HARTOG INDUSTRIES, INC.  
Patent 9,162,816  
Other Patents Pending



 **Den Hartog**  
INDUSTRIES, INC.  
"Always at Your Service"



**Warning:** Cancer and Reproductive Harm.  
[www.p65Warnings.ca.gov](http://www.p65Warnings.ca.gov)

Ph: 800-342-3408  
Fax: 712-752-8222

[www.denhartogindustries.com](http://www.denhartogindustries.com)  
[sales@denhartogindustries.com](mailto:sales@denhartogindustries.com)

4010 Hospers Dr. South  
Hospers, IA 51238

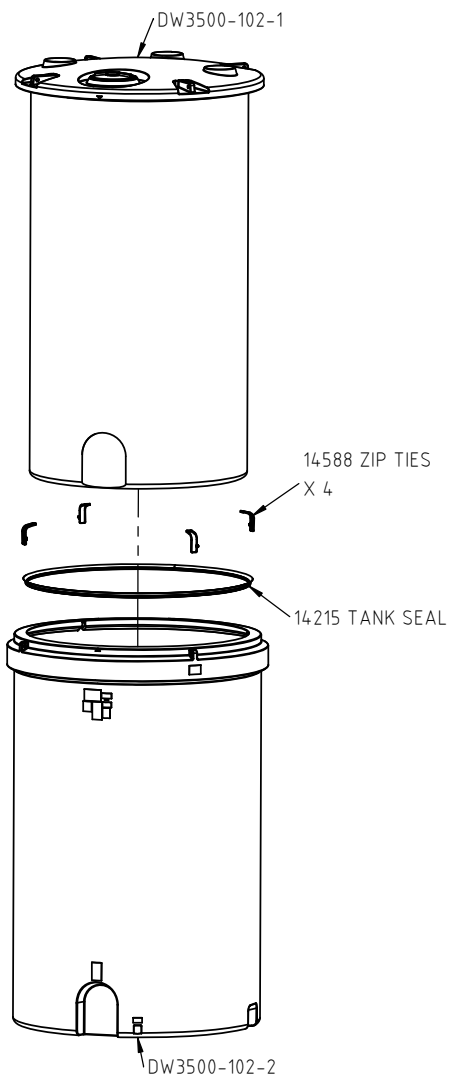
© DEN HARTOG INDUSTRIES, INC.

Copyright. All information furnished within this document, electronic file or design correspondence is the property of Den Hartog Industries, Inc. and shall not be used, disclosed to others or copied without the expressed written consent of Den Hartog Industries, Inc.

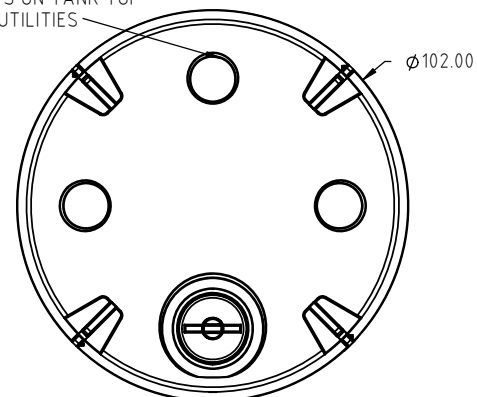
**IMPORTANT!**

NEVER FILL ABOVE THE ADVERTISED CAPACITY OF TANK.  
FAILURE TO HEED MAY EXCEED THE RATED CAPACITY  
OF THE OUTER CONTAINMENT TANK.

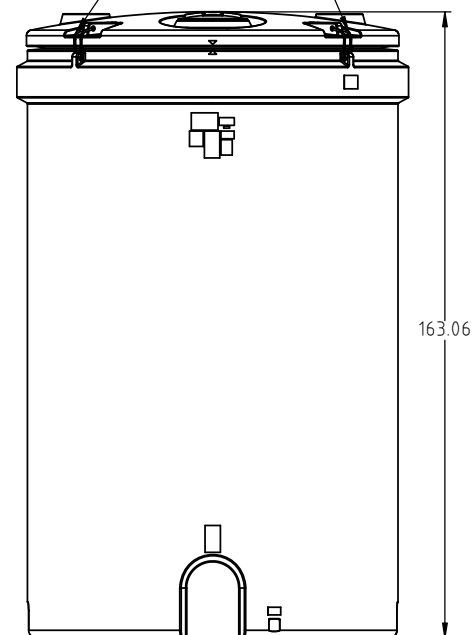
DW3500-102

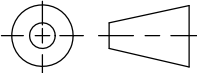


3 X 12.00" DIA. FITTING  
FLATS ON TANK TOP  
FOR UTILITIES



SECURE TANKS THROUGH  
LIFTING LUGS USING  
ZIP TIES



				DRAWN / DATE	MATERIAL  SEE NOTE 1
				ADH 10/23/14	
				APPRD. / DATE	
REV	DESCRIPTION	BY / DATE	CCN	REH 6/12/19	
ALL DIMENSIONS ARE IN DECIMAL INCHES TOLERANCES UNLESS OTHERWISE SPECIFIED		THIRD ANGLE PROJECTION ANSI 14.5M		SHOT WEIGHT:	NOTES:  1.) REFERENCE COMPONENT PRINTS FOR DETAILS 2.) PATENT 9,162,816
POLYETHYLENE				SHIPPING WEIGHT: 1707.00 LBS.	
±1% @ 68°F				FINISH:	
METAL DECIMAL ± .125" FRACTION ± 1/4" ANGLE ± 1°					



**Den Hartog**  
INDUSTRIES, INC.

Ace Roto-Mold Injection Molding Blow Molding Sowjoy

4010 HOSPERS DRIVE S. BOX 425, HOSPERS, IOWA 51238-0425

DESCRIPTION		3500 GALLON DUAL LINE™ TANK ASSEMBLY	
SCALE	N.S.	PART NO.	DW3500-102

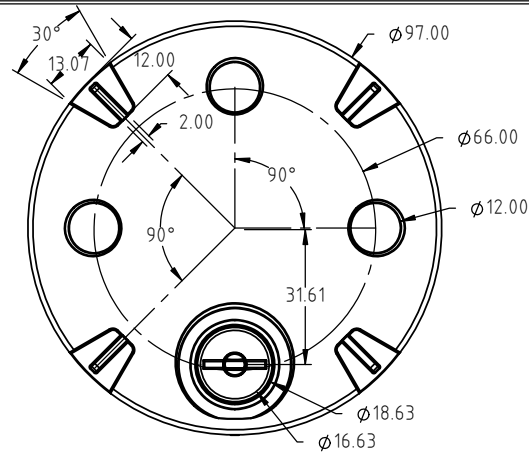
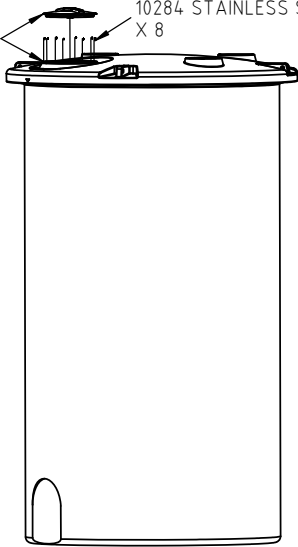
© DEN HARTOG INDUSTRIES, INC.

Copyright. All information furnished within this document, electronic file or design correspondence is the property of Den Hartog Industries, Inc. and shall not be used, disclosed to others or copied without the expressed written consent of Den Hartog Industries, Inc.

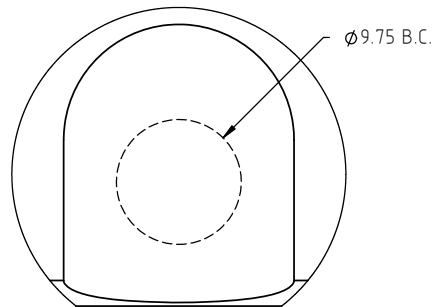
DW3500-102-1

10528  
16" LID

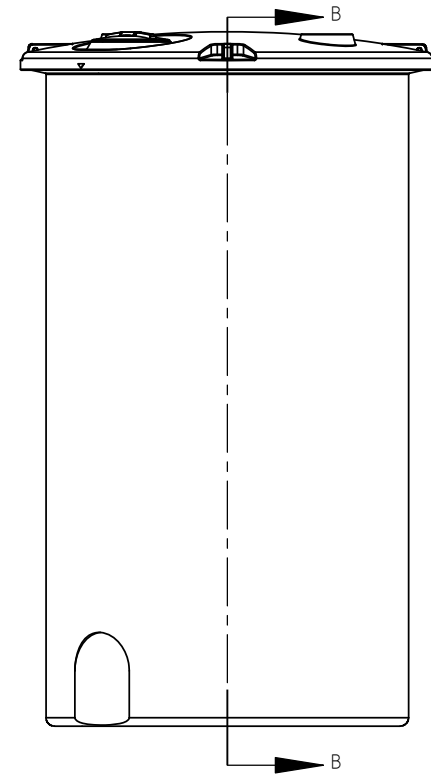
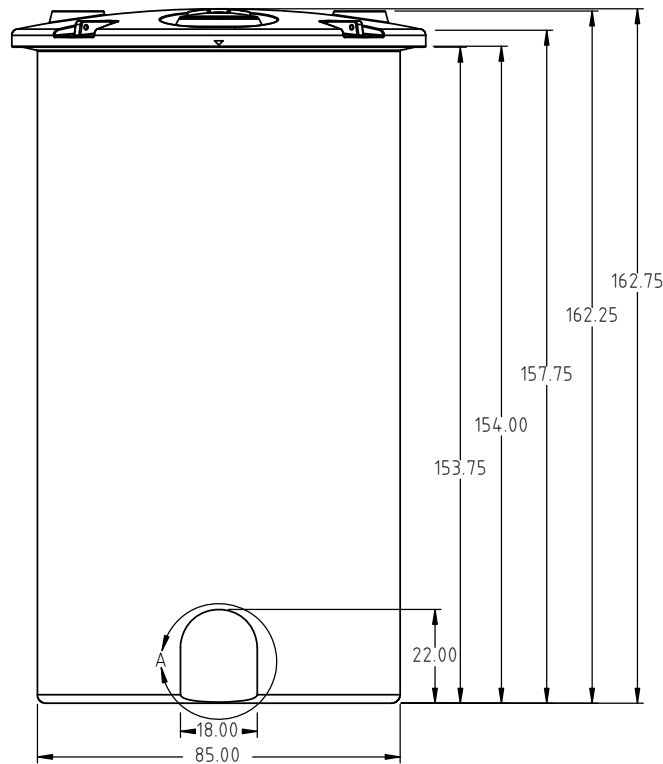
10284 STAINLESS STEEL SCREW  
X 8



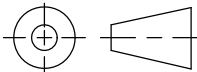
FITTING OPTIONAL

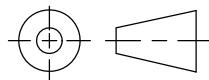


DETAIL A  
SCALE 1:15



SEE SHEET  
2 OF 2 FOR  
DETAILS

				DRAWN / DATE ADH 3/11/14	MATERIAL  10420
				APPRD. / DATE REH 6/12/19	
REV	DESCRIPTION	BY / DATE	CCN		
ALL DIMENSIONS ARE IN DECIMAL INCHES TOLERANCES UNLESS OTHERWISE SPECIFIED		THIRD ANGLE PROJECTION ANSI 14.5M		SHOT WEIGHT: 900.00 LBS	
POLYETHYLENE				SHIPPING WEIGHT: 902.00 LBS	
METAL DECIMAL ± .125" FRACTION ± 1/4" ANGLE ± 1°				FINISH:	
±1% @ 68°F					



**Den Hartog**  
INDUSTRIES, INC.


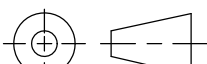
Ace Roto-Mold Injection Molding Blow Molding Sowjoy

4010 HOSPERS DRIVE S. BOX 425, HOSPERS, IOWA 51238-0425

DESCRIPTION		3500 GALLON DUAL LINE™ TANK-INNER TANK-1 OF 2	
SCALE	N.S.	PART NO.	DW3500-102-1

Copyright. All information furnished within this document, electronic file or design correspondence is the property of Den Hartog Industries, Inc. and shall not be used, disclosed to others or copied without the expressed written consent of Den Hartog Industries, Inc.

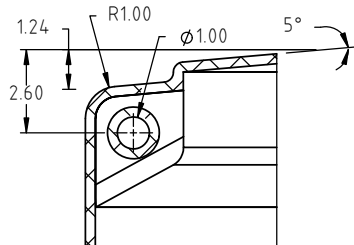
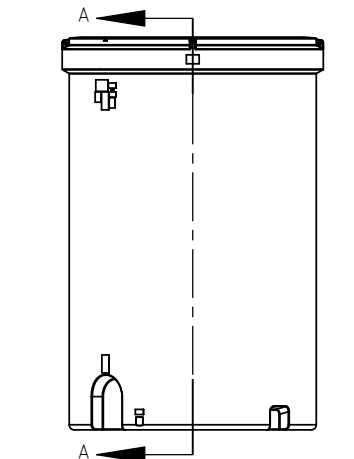


				DRAWN / DATE ADH 3/11/14	MATERIAL	<div><div><div>Den Hartog</div><div>INDUSTRIES, INC.</div><div>Ace Roto-Mold Injection Molding Blow Molding Sowjoy</div><div>4010 HOSPERS DRIVE S. BOX 425, HOSPERS, IOWA 51238-0425</div></div></div>
				APPRD. / DATE REH 6/12/19		
REV	DESCRIPTION	BY / DATE	CCN			
ALL DIMENSIONS ARE IN DECIMAL INCHES TOLERANCES UNLESS OTHERWISE SPECIFIED		THIRD ANGLE PROJECTION ANSI 14.5M		SHOT WEIGHT:	NOTES:  1.) PATENT PENDING	
<u>POLYETHYLENE</u>		METAL		SHIPPING WEIGHT:		
±1% @ 68°F		DECIMAL ± .125" FRACTION ± 1/4" ANGLE ± 1°		FINISH:		
				DESCRIPTION 3500 GALLON DUAL LINE™ TANK-INNER TANK- 2 OF 2		
				SCALE N.S.	PART NO.	

# © DEN HARTOG INDUSTRIES, INC.

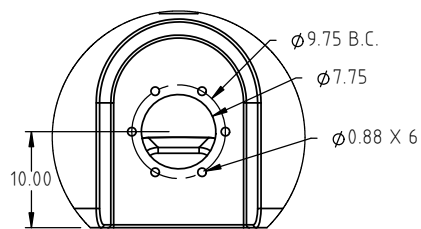
Copyright. All information furnished within this document, electronic file or design correspondence is the property of Den Hartog Industries, Inc. and shall not be used, disclosed to others or copied without the expressed written consent of Den Hartog Industries, Inc.

DW3500-102-2

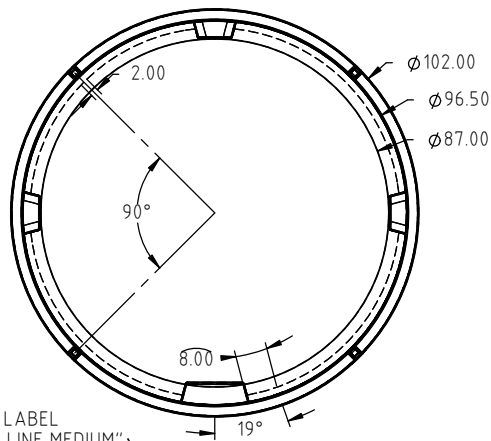


SECTION A-A  
SCALE 1: 6

FITTING OPTIONAL



DETAIL B  
SCALE 1:20



14231 LABEL  
"DUALLINE MEDIUM"

R0.31

10357 LABEL  
"BAR CODE"

14271 LABEL  
"LIFTING LUG"

14234 LABEL  
"PATENT PENDING"

19520 LABEL  
"SPECIFIC GRAVITY"

19496 LABEL  
"NSF"

10353 LABEL  
"WARNING"

10353 LABEL  
"WARNING"

19575 LABEL  
"SERVICE FITTING"

R0.31

R2.00

14.00

87.68

96.50

153.49

152.24

148.75

140.75

139.25

20.00

R0.31

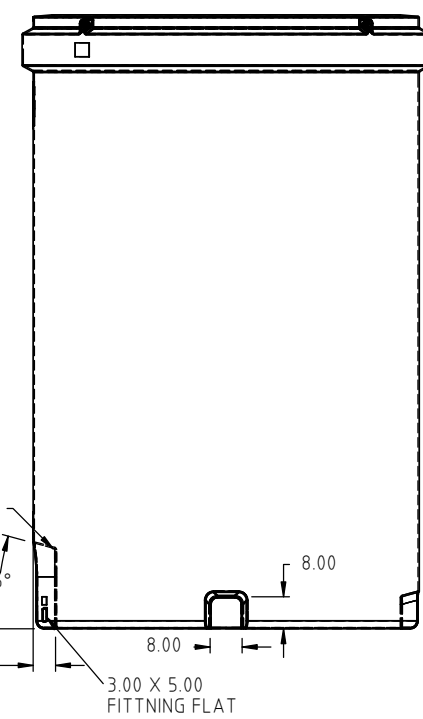
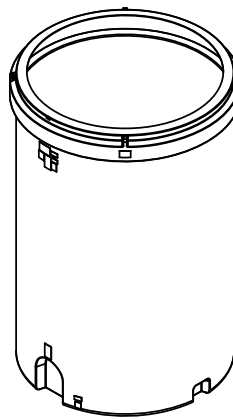
15°

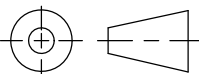
5.58

8.00

8.00

3.00 X 5.00  
FITTING FLAT



				DRAWN / DATE	MATERIAL
				ADH 3/10/14	
				APPRD. / DATE	
				REH 6/12/19	
REV	DESCRIPTION	BY / DATE	CCN		10420
ALL DIMENSIONS ARE IN DECIMAL INCHES TOLERANCES UNLESS OTHERWISE SPECIFIED		THIRD ANGLE PROJECTION ANSI 14.5M		SHOT WEIGHT: 850.00 LBS.	NOTES: 1.) 0.310 NOM. WALL THICKNESS 2.) PATENT 9,162,816
POLYETHYLENE				SHIPPING WEIGHT: 807.00 LBS.	
±1% @ 68°F				FINISH:	
METAL DECIMAL ± .125" FRACTION ± 1/4" ANGLE ± 1°					



**Den Hartog**  
INDUSTRIES, INC.

Ace Roto-Mold Injection Molding Blow Molding Sowjoy

4010 HOSPERS DRIVE S. BOX 425, HOSPERS, IOWA 51238-0425

DESCRIPTION		3500 GALLON DUAL LINE™ TANK- OUTER TANK	
SCALE	N.S.	PART NO.	DW3500-102-2