

## PRODUCT RELEASE

### NEW FLOAT DRUM

#### Foam-Filled 2448-18



*Den Hartog Industries is proud to expand its line of float drums. The product is designed as a foam-filled dock float. Float top and bottom are ribbed for strength. Sidewalls are ribbed at each connection point for strength. Foam filled products are tested in accordance to industry standards as established by IMANNA Laboratories.*

#### FEATURES:

- Furnished with one 3/8" NPT plug for thermal ventilation when out of water
- 8 mounting slots for attachment
- Foam fill is expanded Polystyrene (EPS) with a density of 1 lb/cubic foot. Polystyrene is CFC free.
- Encasement is produced from Linear Low Density Polyethylene.
- Standard color is black
- Maximum support buoyancy of foam filled float is 628 lbs.

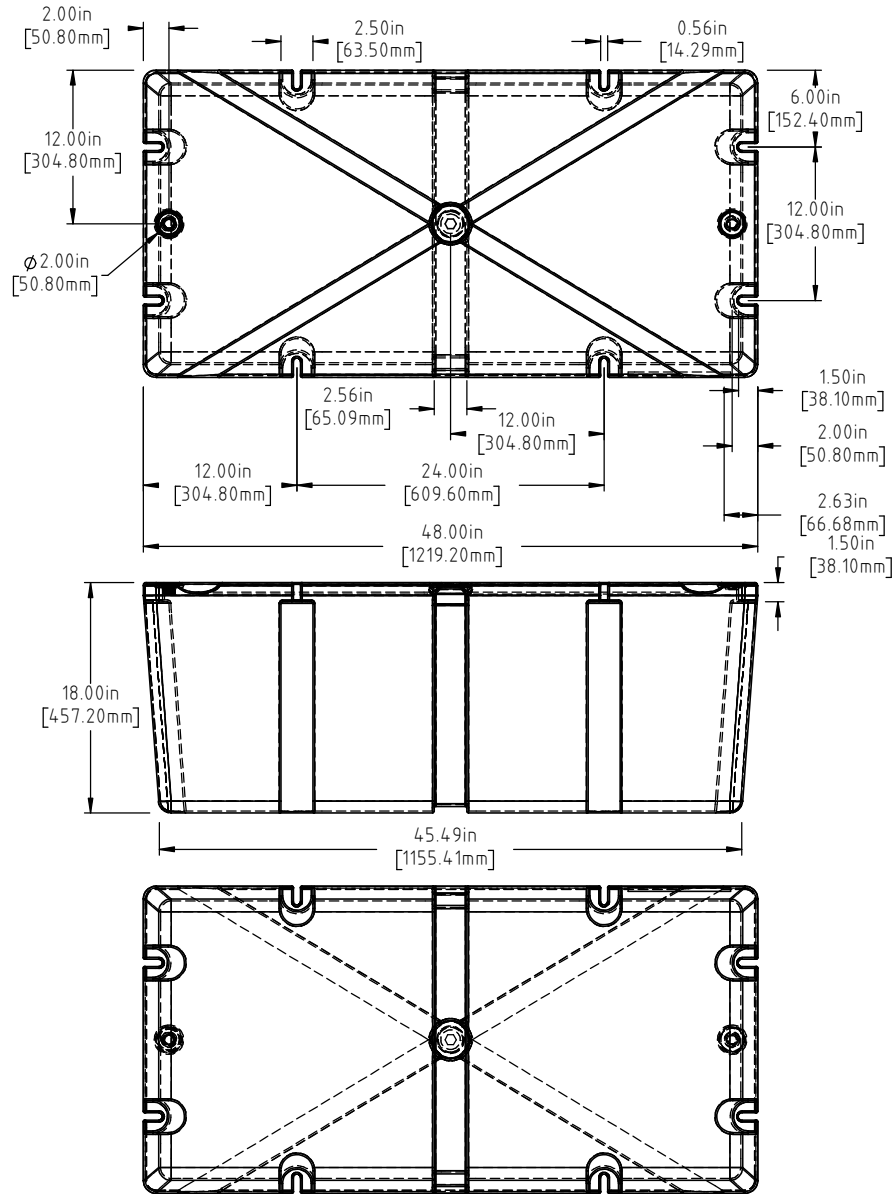
#### SPECIFICATIONS:

Overall Float Dimensions: 24" wide x 48" long x 18" tall  
Shipping Weight Foam-Filled Float FF2448-18: 39 lbs.


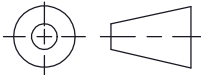


Warning: Cancer and Reproductive Harm.  
Www.p65Warnings.ca.gov

Copyright. All information furnished within this document, electronic file or design correspondence is the property of Den Hartog Industries, Inc. and shall not be used, disclosed to others or copied without the expressed written consent of Den Hartog Industries, Inc.



NOTE: BUOYANCY IS 628.00 LBS.(284.90 KG)

				DRAWN / DATE ADH 11/14/19	MATERIAL POLYETHYLENE	 <p><b>Den Hartog</b> INDUSTRIES, INC.</p> <p>Ace Roto-Mold Injection Molding Blow Molding Sowjoy</p> <p>4010 HOSPERS DRIVE S. BOX 425, HOSPERS, IOWA 51238-0425</p>
				APPRO. / DATE REH 11/21/19		
REV	DESCRIPTION	BY / DATE	CCN	SHOT WEIGHT: 28 LBS.(12.70 KG.)	NOTES: 1.) AF 28 LBS.(12.70 KG.) 2.) FF 38 LBS.(17.24 KG.) 3.) 0.150 IN (3.81 mm) NOM. WALL	DESCRIPTION 24 X 48 X 18 FLOAT
ALL DIMENSIONS ARE IN DECIMAL INCHES TOLERANCES UNLESS OTHERWISE SPECIFIED POLYETHYLENE		THIRD ANGLE PROJECTION ANSI 14.5M 		SHIPPING WEIGHT: SEE NOTES FINISH:		SCALE N.S.
±1% @ 68°F METAL DECIMAL ± .125" FRACTION ± 1/4" ANGLE ± 1°						PART NO. 2448-18