

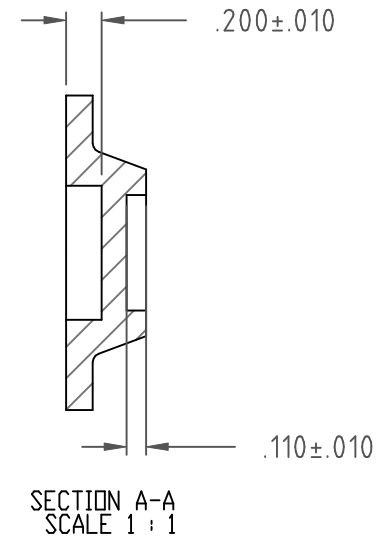
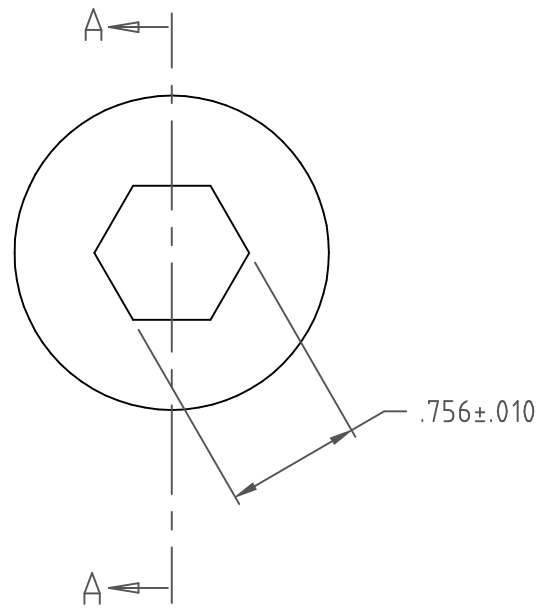
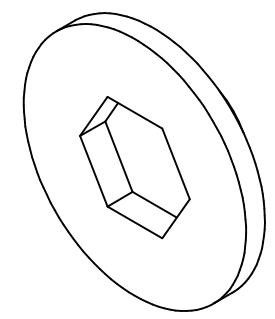
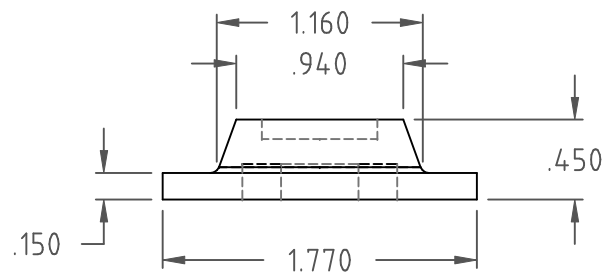
PROPRIETARY DATA

PROPERTY OF ACE ROTO-MOLD MFG., INC. INFORMATION FURNISHED HEREIN IS THE PROPERTY OF ACE ROTO-MOLD MFG., INC. AND SHALL NOT BE USED, DISCLOSED TO OTHERS, OR COPIED WITHOUT THE EXPRESSED WRITTEN CONSENT OF ACE ROTO-MOLD MFG., INC. ALL RIGHTS RESERVED.

PART NUMBER	DESCRIPTION	MATERIAL
12083	SPINWELD, 1" PATCH BLUE	66326
13008	SPINWELD, 1" PATCH GREY	66314
12090	SPINWELD, 1" PATCH GREEN	66328
12134	SPINWELD, 1" PATCH ORANGE	66444
10009	SPINWELD, 1" PATCH WHITE	60402W
12138	SPINWELD, 1" PATCH YELLOW	66445
10008	SPINWELD, 1" PATCH BLACK	60402B

10008

B



DRAWN / DATE GWC / 5-10-06				MATERIAL HDPE OR EQUIVALENT REFERENCE MATERIAL DATA SHEET FOR SPECIFIC PROPERTIES.		INJECTION MOLDING A DIVISION OF DEN HARTOG INDUSTRIES, INC. 4010 HOSPERS DRIVE S., BOX 425, HOSPERS, IOWA 51238-0425	
APPRD. / DATE REH 4/18/07							
B	ADDED P.N. TABLE CCN 1509	11-16-07	ADH	CLIENT / DESCRIPTION			
A	UPDATE LOGO CCN 1296	4-17-06	GWC	1 Inch Spinweld			
REV	DESCRIPTION	DATE	APPRD	NOTES:		SCALE	PART NO.
ALL DIMENSIONS ARE IN DECIMAL INCHES TOLERANCES UNLESS OTHERWISE SPECIFIED .XXX +/- .006 .XX +/- .016 .X +/- .032				THIRD ANGLE PROJECTION ANSI 14.5M 		1. SHOT WEIGHT 10 GRAMS	N.S.
							SEE SCH.