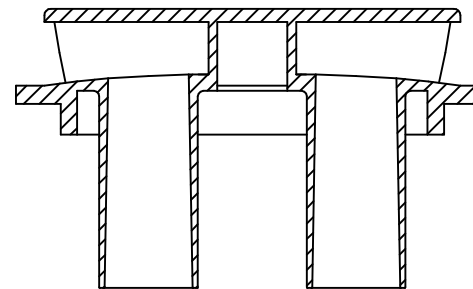
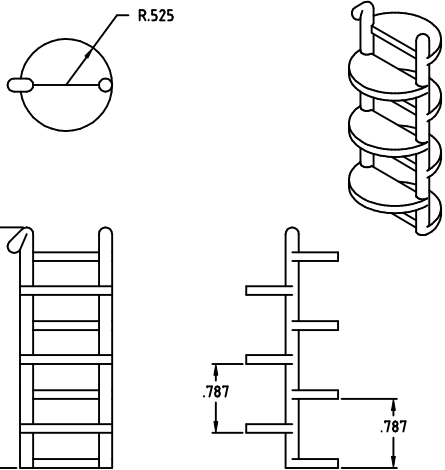
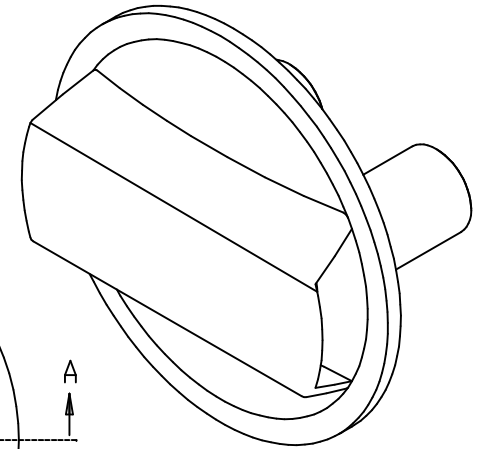
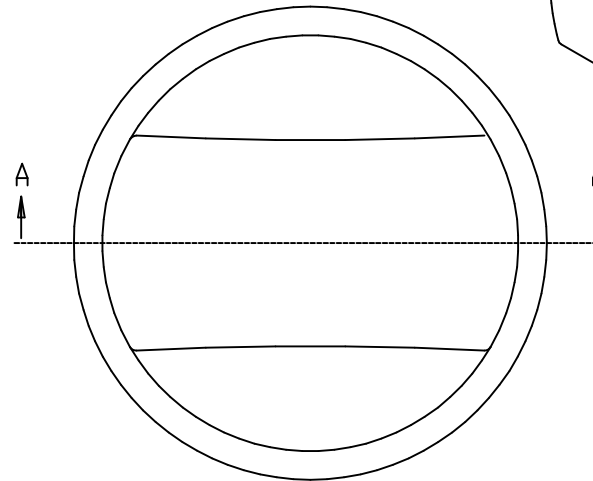
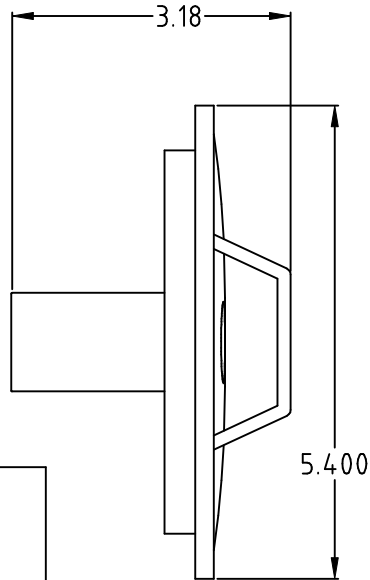
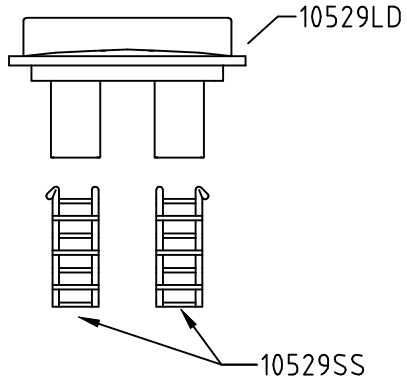


PROPRIETARY DATA

PROPERTY OF ACE ROTO-MOLD MFG., INC. INFORMATION FURNISHED HEREIN IS THE PROPERTY OF ACE ROTO-MOLD MFG., INC. AND SHALL NOT BE USED, DISCLOSED TO OTHERS, OR COPIED WITHOUT THE EXPRESSED WRITTEN CONSENT OF ACE ROTO-MOLD MFG., INC. ALL RIGHTS RESERVED.

10529

B



SECTION A-A
SCALE 1 : 1

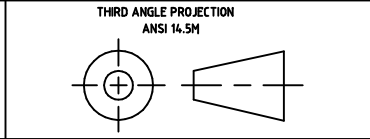
| | | | |
|-----|-------------------------------|---------|-------|
| B | CHANGE DESCRIPTION | 5/8/07 | GWC |
| A | UPDATE LOGO AND TOL. CCN 1296 | 4/20/07 | GWC |
| REV | DESCRIPTION | DATE | APPRD |

| | |
|---------------|---------------|
| DRAWN / DATE | GWC / 5-16-06 |
| APPRD. / DATE | DHJ 4/26/07 |

| | |
|----------|--|
| MATERIAL | POLYPROPYLENE REFERENCE MATERIAL DATA SHEET FOR SPECIFIC PROPERTIES. |
|----------|--|

INJECTION MOLDING
A DIVISION OF DEN HARTOG INDUSTRIES, INC.
4010 HOSPERS DRIVE S., BOX 425, HOSPERS, IOWA 51238-0425

ALL DIMENSIONS ARE IN DECIMAL INCHES
TOLERANCES UNLESS OTHERWISE SPECIFIED
.XXX +/- .016
.XX +/- .032
.X +/- .062



NOTES:
1. NOM. WALL @
2. BLACK COLOR
3. PART WEIGHT 170 GRAMS.

| | | | |
|----------------------|------|---|-------|
| CLIENT / DESCRIPTION | | 4" CENTER BREATHER ASSEMBLY FOR 16" LID | |
| SCALE | N.S. | PART NO. | 10529 |