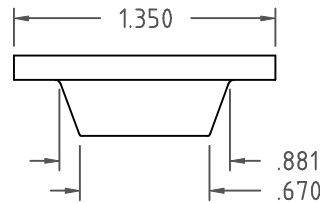
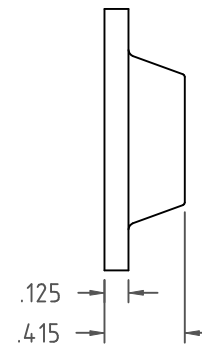
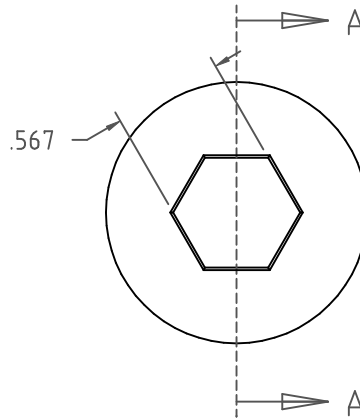
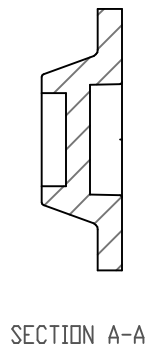
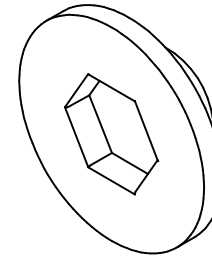
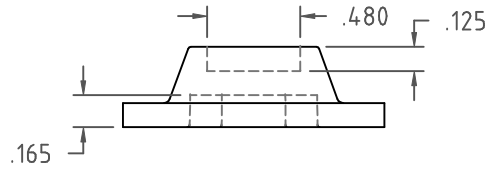



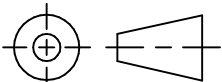
PROPRIETARY DATA

PROPERTY OF ACE ROTO-MOLD MFG., INC. INFORMATION FURNISHED HEREIN IS THE PROPERTY OF ACE ROTO-MOLD MFG., INC. AND SHALL NOT BE USED, DISCLOSED TO OTHERS, OR COPIED WITHOUT THE EXPRESSED WRITTEN CONSENT OF ACE ROTO-MOLD MFG., INC. ALL RIGHTS RESERVED.

12104

A



				DRAWN / DATE GWC / 12-21-06		MATERIAL		 INJECTION MOLDING A DIVISION OF DEN HARTOG INDUSTRIES, INC. 4010 HOSPERS DRIVE S., BOX 425, HOSPERS, IOWA 51238-0425	
				APPRD. / DATE REH / 2-19-07		LLDPE OR EQUIVILANT REFERENCE MATERIAL DATA SHEET FOR SPECIFIC PROPERTIES.			
A	UPDATE LOGO	CCN 1296	4/17/07	GWC			CLIENT / DESCRIPTION		
REV	DESCRIPTION	DATE	APPRD			3/4" SPINWELD PATCH - BLACK			
ALL DIMENSIONS ARE IN DECIMAL INCHES TOLERANCES UNLESS OTHERWISE SPECIFIED .XXX +/- .006 .XX +/- .015 .X +/- .032				THIRD ANGLE PROJECTION ANSI 14.5M 		NOTES: 1. NOM. WALL @ .125 2. BLACK COLOR 3. PART WEIGHT 5 GRAMS.		SCALE	PART NO.
						N.S.		12104	