

PROPRIETARY DATA

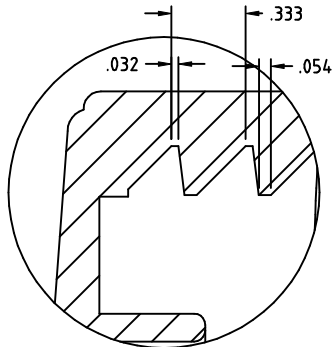
PROPERTY OF ACE ROTO-MOLD MFG., INC. INFORMATION FURNISHED HEREIN IS THE PROPERTY OF ACE ROTO-MOLD MFG., INC. AND SHALL NOT BE USED, DISCLOSED TO OTHERS, OR COPIED WITHOUT THE EXPRESSED WRITTEN CONSENT OF ACE ROTO-MOLD MFG., INC. ALL RIGHTS RESERVED.

12415

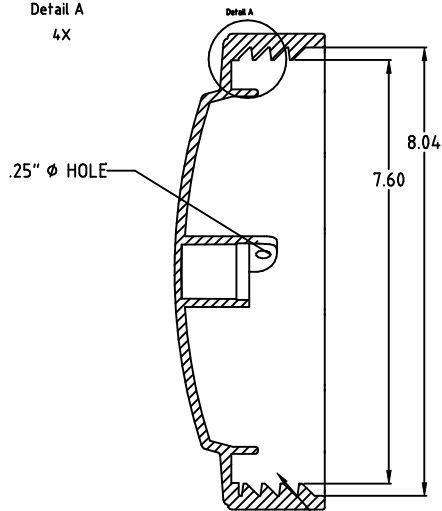
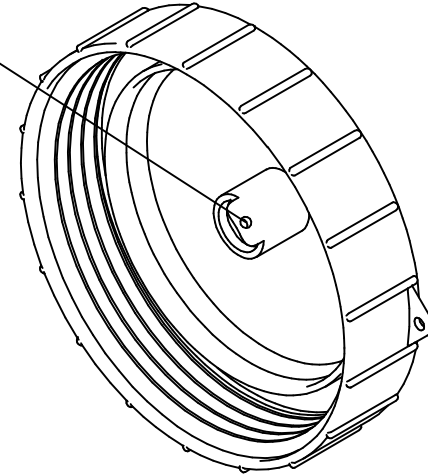
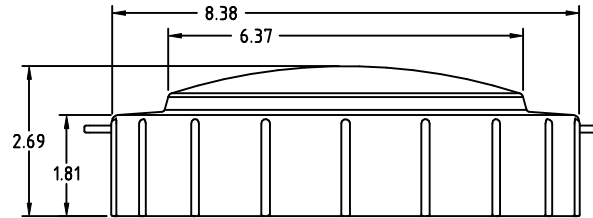
B

1/4" lanyard hole

ⓑ



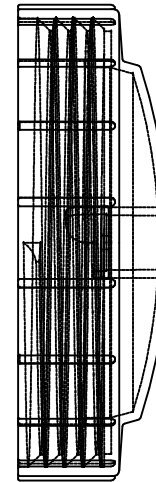
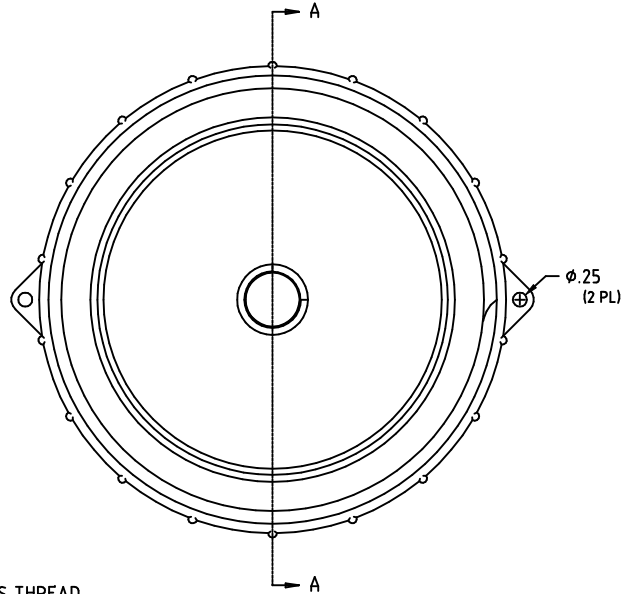
Detail A  
4X


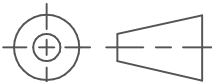


.25"  $\phi$  HOLE

SECTION A-A  
SCALE 1:1

8"-3 BUTTRESS THREAD



				DRAWN / DATE GWC 11/30/06		MATERIAL NO BREAK POLYPROPYLENE REFERENCE MATERIAL DATA SHEET FOR SPECIFIC PROPERTIES.		 <b>INJECTION MOLDING</b> A DIVISION OF DEN HARTOG INDUSTRIES, INC. 4010 HOSPERS DRIVE S., BOX 425, HOSPERS, IOWA 51238-0425		
B	ADD LANYARD HOLE	CCN 1343	6/4/07	GWC	APPRD. / DATE REH 4/24/07	CLIENT / DESCRIPTION 7 INCH LID NON-VENTED LID				
A	UPDATE LOGO	CCN 1296	4/23/07	GWC		SCALE N.S.		PART NO. 12415		
REV	DESCRIPTION	DATE	APPRD							
ALL DIMENSIONS ARE IN DECIMAL INCHES TOLERANCES UNLESS OTHERWISE SPECIFIED .XXX +/- .016 .XX +/- .032 .X +/- .064					THIRD ANGLE PROJECTION ANSI 14.5M 		NOTES: 1. NOM. WALL @ .167" 2. BLACK COLOR 3. PART WEIGHT 384 GRAMS.			