

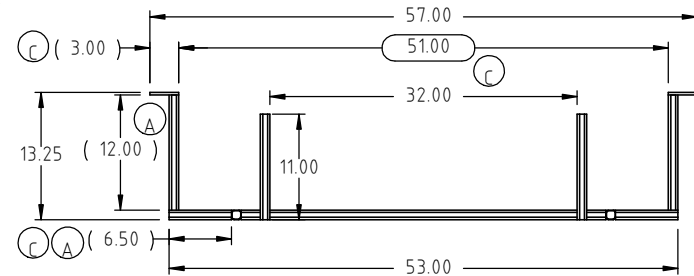
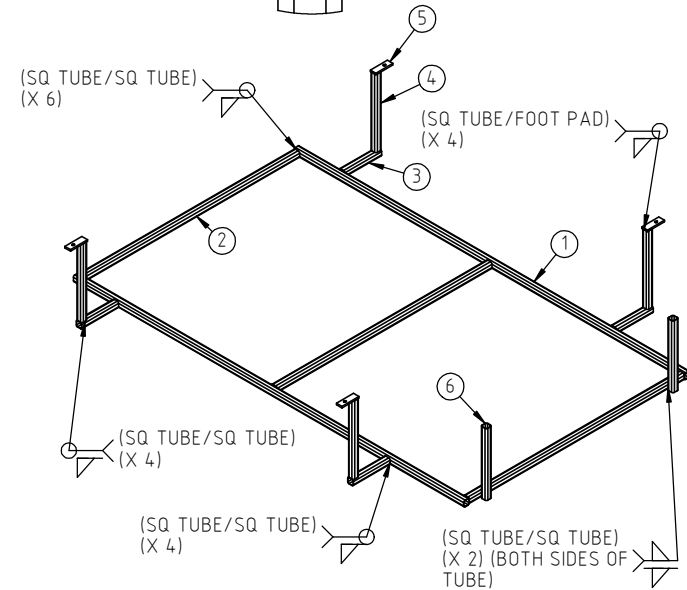
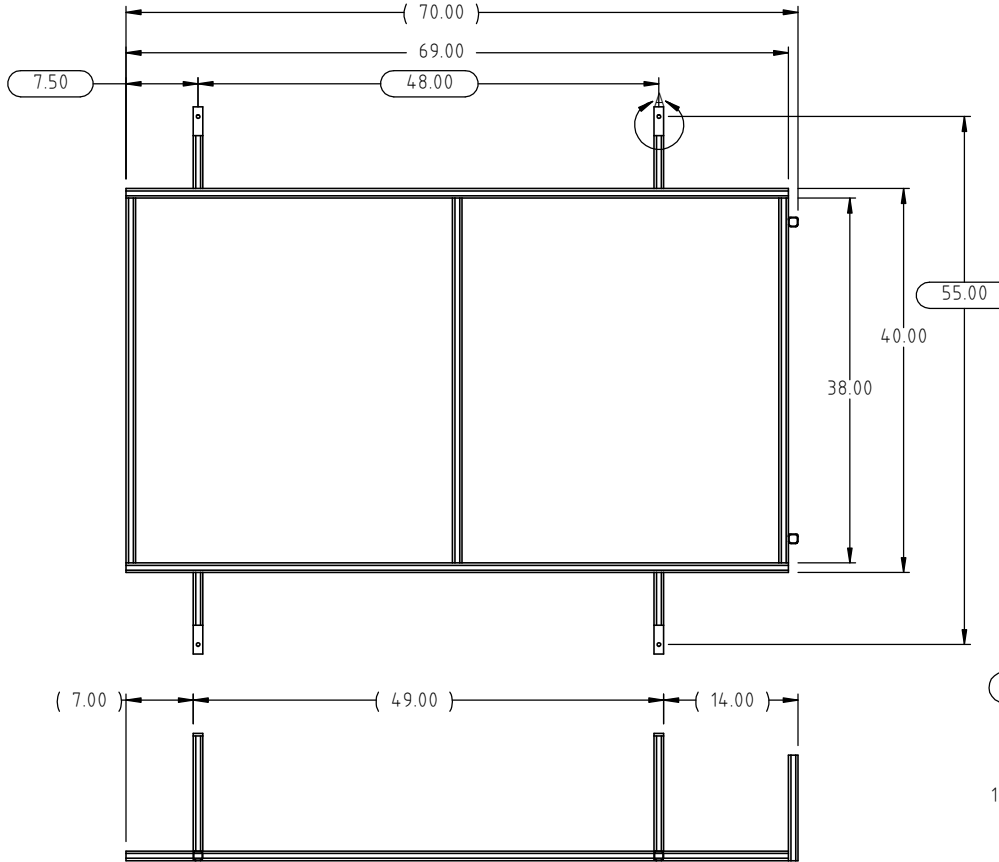
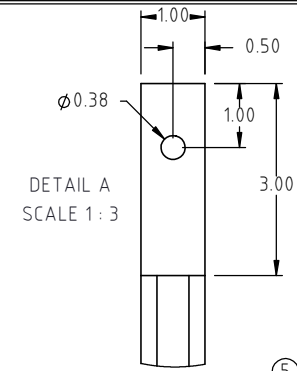
© DEN HARTOG INDUSTRIES, INC.

Copyright. All information furnished within this document, electronic file or design correspondence is the property of Den Hartog Industries, Inc. and shall not be used, disclosed to others or copied without the expressed written consent of Den Hartog Industries, Inc.

KEY	PART NUMBER	DESCRIPTION	QTY.
1	12652-1	RACK LENGTH SQ TUBE	2
2	12652-2	RACK WIDTH SQ TUBE	3
3	12652-3	RACK LEG WIDTH SQ TUBE	4
4	12652-4	RACK LEG HEIGHT SQ TUBE	4
5	12652-5	RACK LEG FOOTPAD	4
6	12652-6	RACK STOPPER SQ TUBE	2

12652

C



C	51.00" WAS 49.00". TABLE/PART NUMBERS WFLD SYMBOLS ADDED.	ADH 3/17/16	3224	DRAWN / DATE	MATERIAL SEE COMPONENTS
B	SHIPPING WEIGHT ADDED TO PRINT	ADH 1/13/15	3001	ADH 2/11/09	
A	12.00" WAS 13.00", 5.50" WAS 4.50"	ADH 2/14/11	2171	APPRD. / DATE KGJ 2/24/09	
REV	DESCRIPTION	BY / DATE	CCN		
ALL DIMENSIONS ARE IN DECIMAL INCHES TOLERANCES UNLESS OTHERWISE SPECIFIED		THIRD ANGLE PROJECTION ANSI 14.5M		SHOT WEIGHT:	NOTES: 1.) ALL ANGLES ARE 90° UNLESS OTHERWISE SPECIFIED.
POLYETHYLENE ±1% @ 68°F		METAL DECIMAL ± .125" FRACTION ± 1/4" ANGLE ± 1°		SHIPPING WEIGHT: 24.00 LBS FINISH: POWDER COATING, BLACK TILE, 40012	



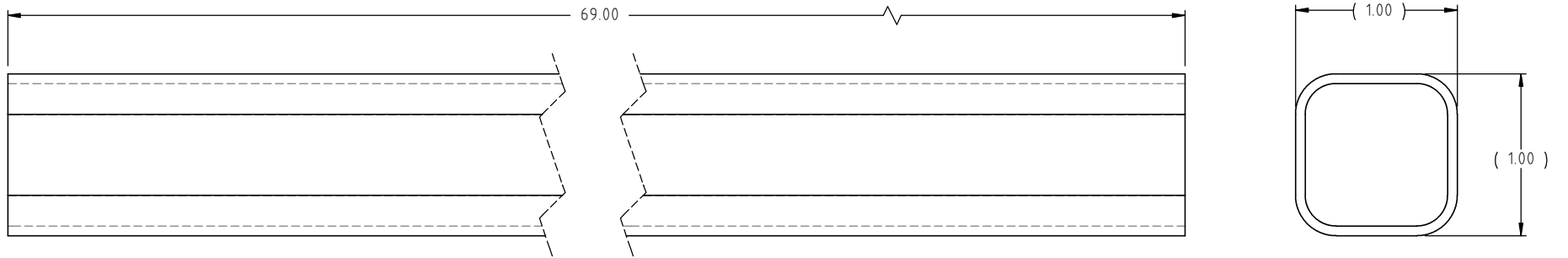
Den Hartog
INDUSTRIES, INC.


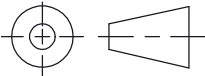
Ace Roto-Mold Injection Molding Blow Molding Sowjoy

4010 HOSPERS DRIVE S. BOX 425, HOSPERS, IOWA 51238-0425

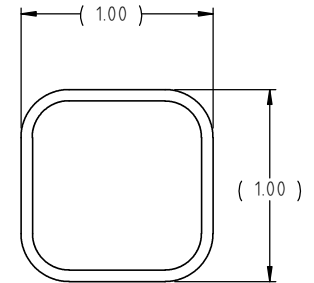
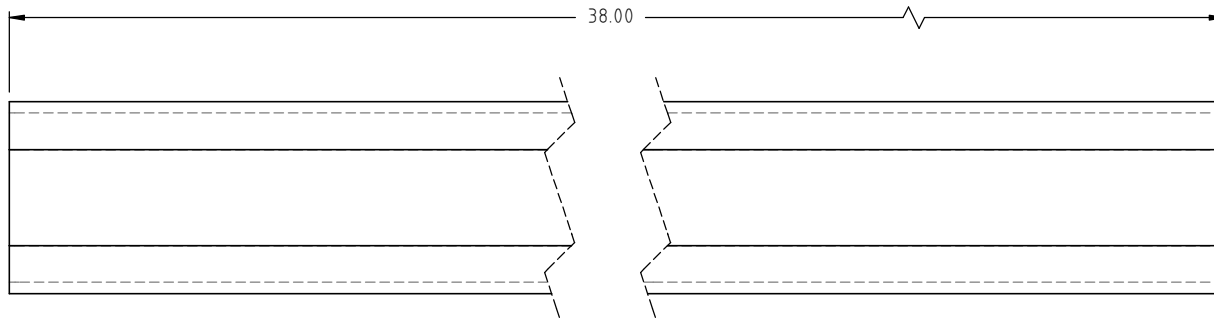
DESCRIPTION	CREEP MAT RACK	
SCALE	N.S.	PART NO. 12652

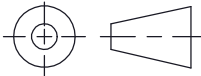
Copyright. All information furnished within this document, electronic file or design correspondence is the property of Den Hartog industries, Inc. and shall not be used, disclosed to others or copied without the expressed written consent of Den Hartog Industries, Inc.



				DRAWN / DATE ADH 3/17/16	MATERIAL TUBING, 1" SQUARE MILD STEEL	 <p>Den Hartog INDUSTRIES, INC.</p> <p>Ace Roto-Mold Injection Molding Blow Molding Sowjoy</p> <p>4010 HOSPERS DRIVE S. BOX 425, HOSPERS, IOWA 51238-0425</p>
				APPROD. / DATE KGJ 3/17/16		
REV	DESCRIPTION	BY / DATE	CCN			
ALL DIMENSIONS ARE IN DECIMAL INCHES TOLERANCES UNLESS OTHERWISE SPECIFIED		THIRD ANGLE PROJECTION ANSI 14.5M		SHOT WEIGHT: N.A.	NOTES:	DESCRIPTION CREEP MAT RACK-RACK LENGTH SQ TUBE
POLYETHYLENE ±1% @ 68°F				SHIPPING WEIGHT: N.A.		
METAL DECIMAL ± .125" FRACTION ± 1/4" ANGLE ± 1°				FINISH: DEBUR		
				SCALE	N.S.	PART NO. 12652-1

Copyright. All information furnished within this document, electronic file or design correspondence is the property of Den Hartog industries, Inc. and shall not be used, disclosed to others or copied without the expressed written consent of Den Hartog Industries, Inc.



				DRAWN / DATE ADH 3/17/16	MATERIAL TUBING, 1" SQUARE MILD STEEL
				APPRD. / DATE KGJ 3/17/16	
REV	DESCRIPTION	BY / DATE	CCN		
ALL DIMENSIONS ARE IN DECIMAL INCHES TOLERANCES UNLESS OTHERWISE SPECIFIED		THIRD ANGLE PROJECTION ANSI 14.5M		SHOT WEIGHT: N.A.	NOTES:
POLYETHYLENE		METAL DECIMAL ± .125" FRACTION ± 1/4" ANGLE ± 1°		SHIPPING WEIGHT: N.A.	
±1% @ 68°F				FINISH: DEBUR	



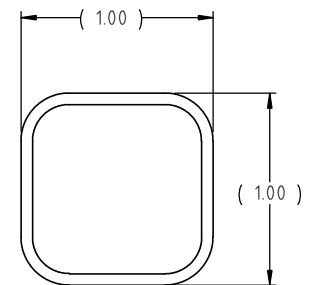
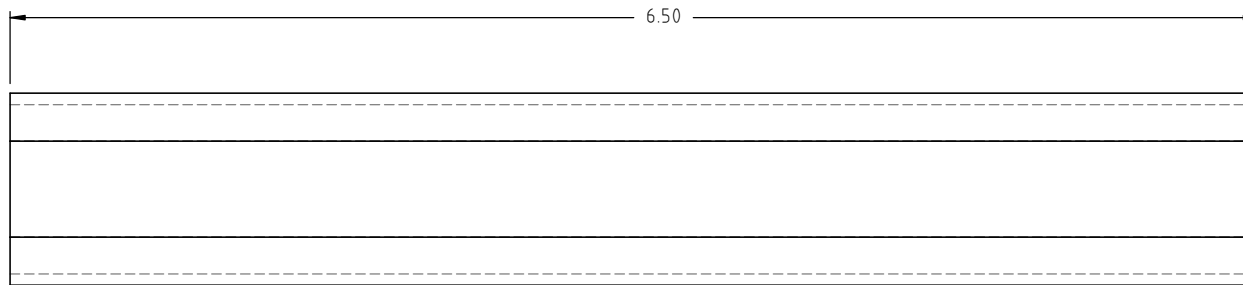
Den Hartog
INDUSTRIES, INC.


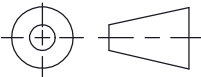
Ace Roto-Mold Injection Molding Blow Molding Sowjoy

4010 HOSPERS DRIVE S. BOX 425, HOSPERS, IOWA 51238-0425

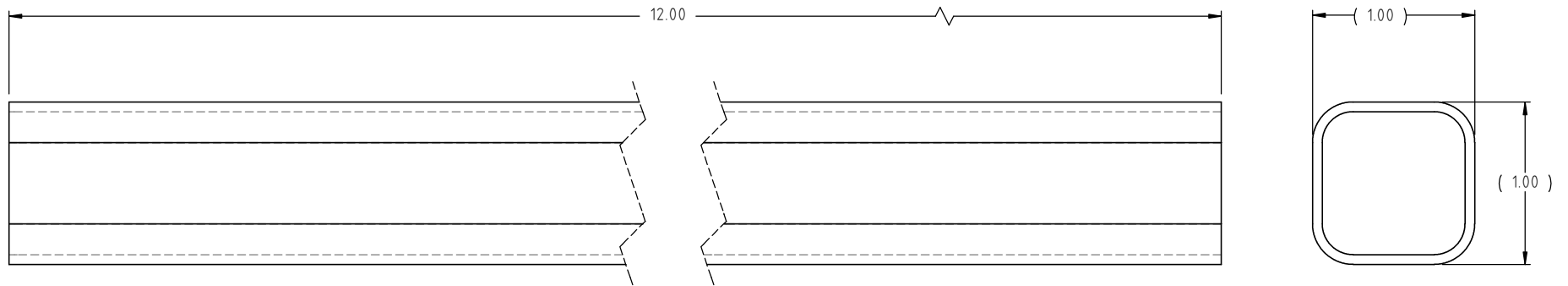
DESCRIPTION CREEP MAT RACK-RACK WIDTH SQ TUBE	
SCALE N.S.	PART NO. 12652-2


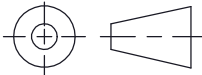
Copyright. All information furnished within this document, electronic file or design correspondence is the property of Den Hartog industries, Inc. and shall not be used, disclosed to others or copied without the expressed written consent of Den Hartog Industries, Inc.



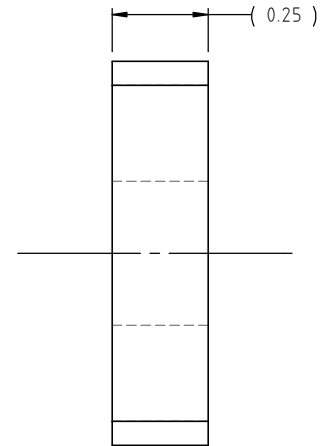
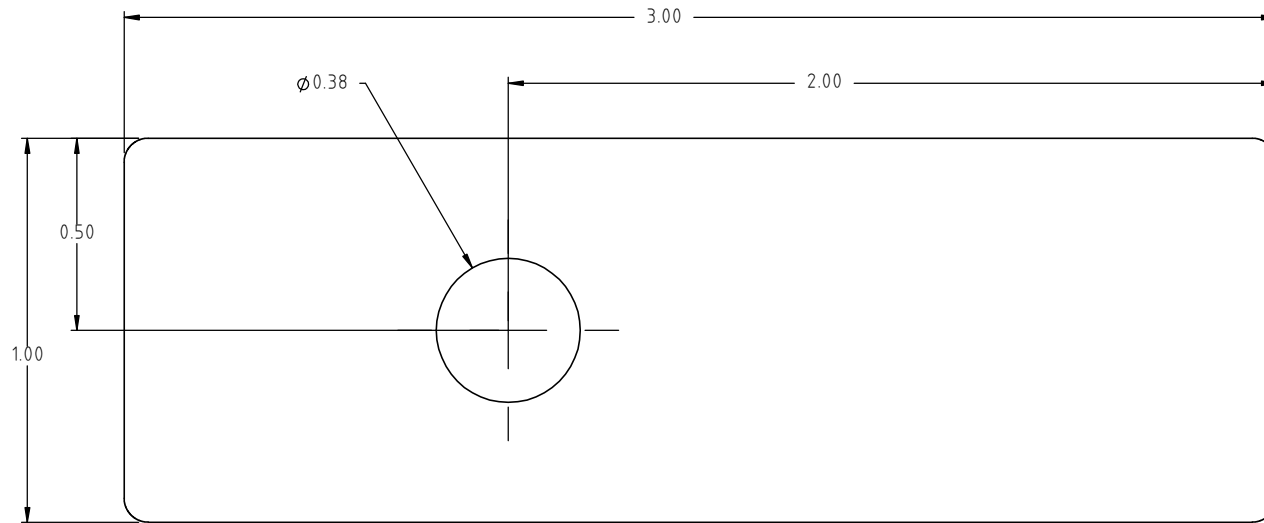
				DRAWN / DATE ADH 3/17/16	MATERIAL TUBING, 1" SQUARE MILD STEEL	 <p>Den Hartog INDUSTRIES, INC.</p> <p>Ace Roto-Mold Injection Molding Blow Molding Sowjoy</p> <p>4010 HOSPERS DRIVE S. BOX 425, HOSPERS, IOWA 51238-0425</p>
				APPROD. / DATE KGJ 3/17/16		
REV	DESCRIPTION	BY / DATE	CCN			
ALL DIMENSIONS ARE IN DECIMAL INCHES TOLERANCES UNLESS OTHERWISE SPECIFIED POLYETHYLENE ±1% @ 68°F		THIRD ANGLE PROJECTION ANSI 14.5M 		SHOT WEIGHT: N.A.	NOTES:	DESCRIPTION CREEP MAT RACK-RACK LEG WIDTH SQ TUBE
				SHIPPING WEIGHT: N.A.		SCALE N.S.
				FINISH: DEBUR		


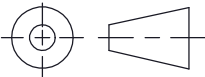
Copyright. All information furnished within this document, electronic file or design correspondence is the property of Den Hartog industries, Inc. and shall not be used, disclosed to others or copied without the expressed written consent of Den Hartog Industries, Inc.



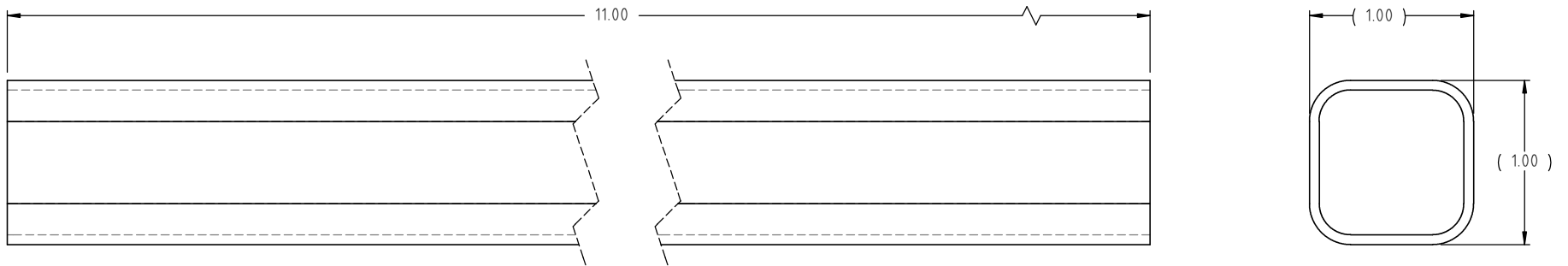
				DRAWN / DATE ADH 3/17/16	MATERIAL TUBING, 1" SQUARE MILD STEEL	 <p>Den Hartog INDUSTRIES, INC.</p> <p>Ace Roto-Mold Injection Molding Blow Molding Sowjoy</p> <p>4010 HOSPERS DRIVE S. BOX 425, HOSPERS, IOWA 51238-0425</p>	
				APPROD. / DATE KGJ 3/17/16			
REV	DESCRIPTION	BY / DATE	CCN				
ALL DIMENSIONS ARE IN DECIMAL INCHES TOLERANCES UNLESS OTHERWISE SPECIFIED		THIRD ANGLE PROJECTION ANSI 14.5M		SHOT WEIGHT: N.A.	NOTES:	DESCRIPTION CREEP MAT RACK-RACK LEG HEIGHT SQ TUBE	
POLYETHYLENE		METAL DECIMAL ± .125" FRACTION ± 1/4" ANGLE ± 1°		SHIPPING WEIGHT: N.A.		SCALE N.S.	PART NO. 12652-4
±1% @ 68°F				FINISH: DEBUR			


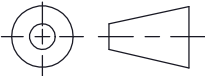
Copyright. All information furnished within this document, electronic file or design correspondence is the property of Den Hartog industries, Inc. and shall not be used, disclosed to others or copied without the expressed written consent of Den Hartog Industries, Inc.



				DRAWN / DATE ADH 3/17/16		MATERIAL FLAT, 1/4" X 1 MILD STEEL		 Den Hartog INDUSTRIES, INC. Ace Roto-Mold Injection Molding Blow Molding Sowjoy 4010 HOSPERS DRIVE S. BOX 425, HOSPERS, IOWA 51238-0425	
				APPROD. / DATE KGJ 3/17/16					
REV	DESCRIPTION	BY / DATE	CCN	SHOT WEIGHT: N.A.		NOTES:		DESCRIPTION CREEP MAT RACK-RACK LEG FOOTPAD	
ALL DIMENSIONS ARE IN DECIMAL INCHES TOLERANCES UNLESS OTHERWISE SPECIFIED POLYETHYLENE ±1% @ 68°F METAL DECIMAL ±.125" FRACTION ± 1/4" ANGLE ± 1°		THIRD ANGLE PROJECTION ANSI 14.5M 		SHIPPING WEIGHT: N.A.					
				FINISH: DEBUR		SCALE N.S.		PART NO. 12652-5	

Copyright. All information furnished within this document, electronic file or design correspondence is the property of Den Hartog industries, Inc. and shall not be used, disclosed to others or copied without the expressed written consent of Den Hartog Industries, Inc.



				DRAWN / DATE ADH 3/17/16	MATERIAL TUBING, 1" SQUARE MILD STEEL	 <p>Den Hartog INDUSTRIES, INC.</p> <p>Ace Roto-Mold Injection Molding Blow Molding Sowjoy</p> <p>4010 HOSPERS DRIVE S. BOX 425, HOSPERS, IOWA 51238-0425</p>	
				APPROD. / DATE KGJ 3/17/16			
REV	DESCRIPTION	BY / DATE	CCN				
ALL DIMENSIONS ARE IN DECIMAL INCHES TOLERANCES UNLESS OTHERWISE SPECIFIED		THIRD ANGLE PROJECTION ANSI 14.5M		SHOT WEIGHT: N.A.	NOTES:	DESCRIPTION CREEP MAT RACK-RACK STOPPER SQ TUBE	
POLYETHYLENE		METAL DECIMAL ± .125" FRACTION ± 1/4" ANGLE ± 1°		SHIPPING WEIGHT: N.A.		SCALE N.S.	PART NO. 12652-6
±1% @ 68°F				FINISH: DEBUR			