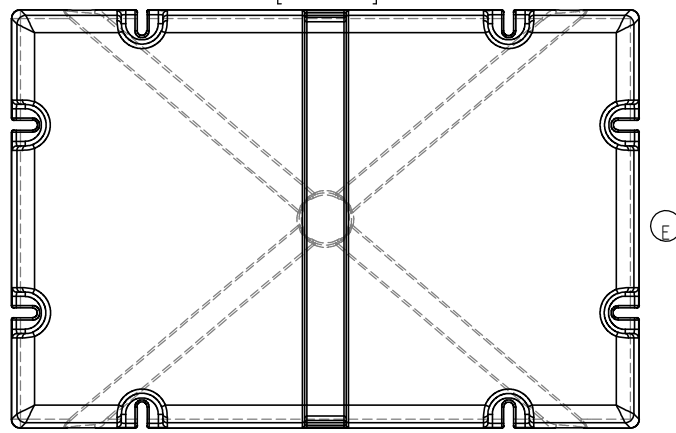
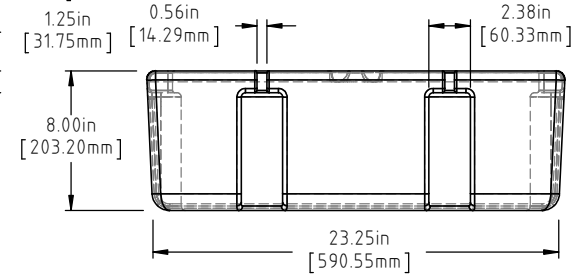
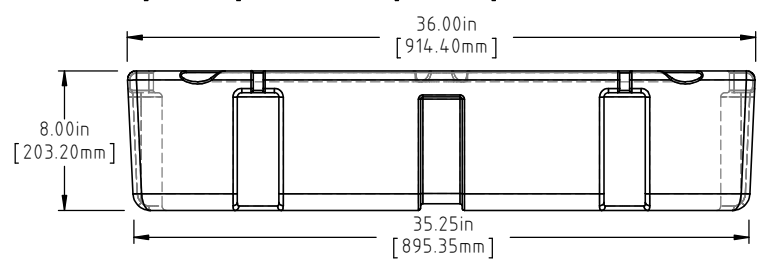
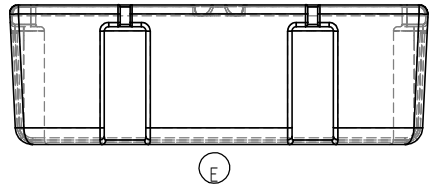
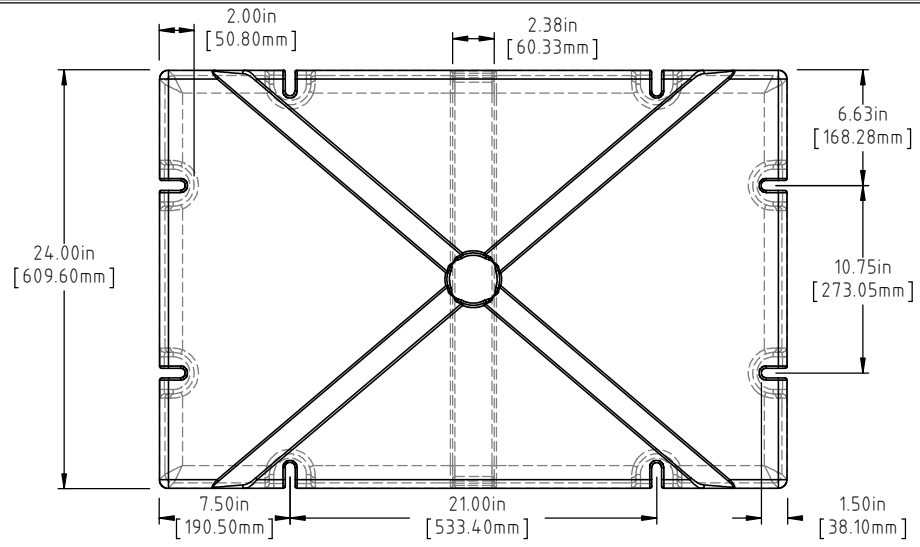


Copyright. All information furnished within this document, electronic file or design correspondence is the property of Den Hartog industries, Inc. and shall not be used, disclosed to others or copied without the expressed written consent of Den Hartog Industries, Inc.



E	BOTTOM AND SIDE VIEWS ADDED TO PRINT	ADH 12/5/14	2971
D	21 LBS WAS 20 LBS, 211 LBS WAS 215 LBS	GWC 11/30/06	2420
C	METRIC DIMENSIONS ADDED	ADH 7/1/08	1685
B	CHANGE WEIGHT	GWC 11/30/06	
A	ADDED BUOYANCY	GWC 11/30/06	
REV	DESCRIPTION	BY / DATE	CCN

DRAWN / DATE REH 12/24/98	MATERIAL POLYETHYLENE
APPRD. / DATE ADH 11/5/07	
SHOT WEIGHT: 16 LBS.(7.26 KG.)	NOTES: (B)(D) 1.) AF 16 LBS.(7.26 KG.) 2.) FF 21 LBS.(9.53KG.) 3.) 0.150in (3.81mm) NOM. WALL
SHIPPING WEIGHT: SEE NOTES	
FINISH:	

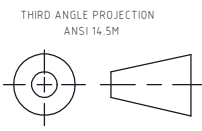
(A)(D) NOTE: BUOYANCY 211 LBS.(95.71 KG.)



Den Hartog
INDUSTRIES, INC.

Ace Roto-Mold Injection Molding Blow Molding Sowjoy
4010 HOSPERS DRIVE S. BOX 425, HOSPERS, IOWA 51238-0425

ALL DIMENSIONS ARE IN DECIMAL INCHES
TOLERANCES UNLESS OTHERWISE SPECIFIED
POLYETHYLENE METAL
DECIMAL ± .125"
FRACTION ± 1/4"
ANGLE ± 1°
±1% @ 68°F



DESCRIPTION	24 X 36 X 08 FLOAT	
SCALE	N.S.	PART NO. 2436-08