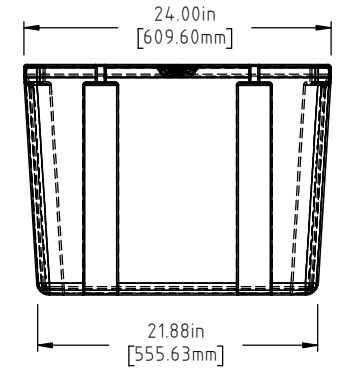
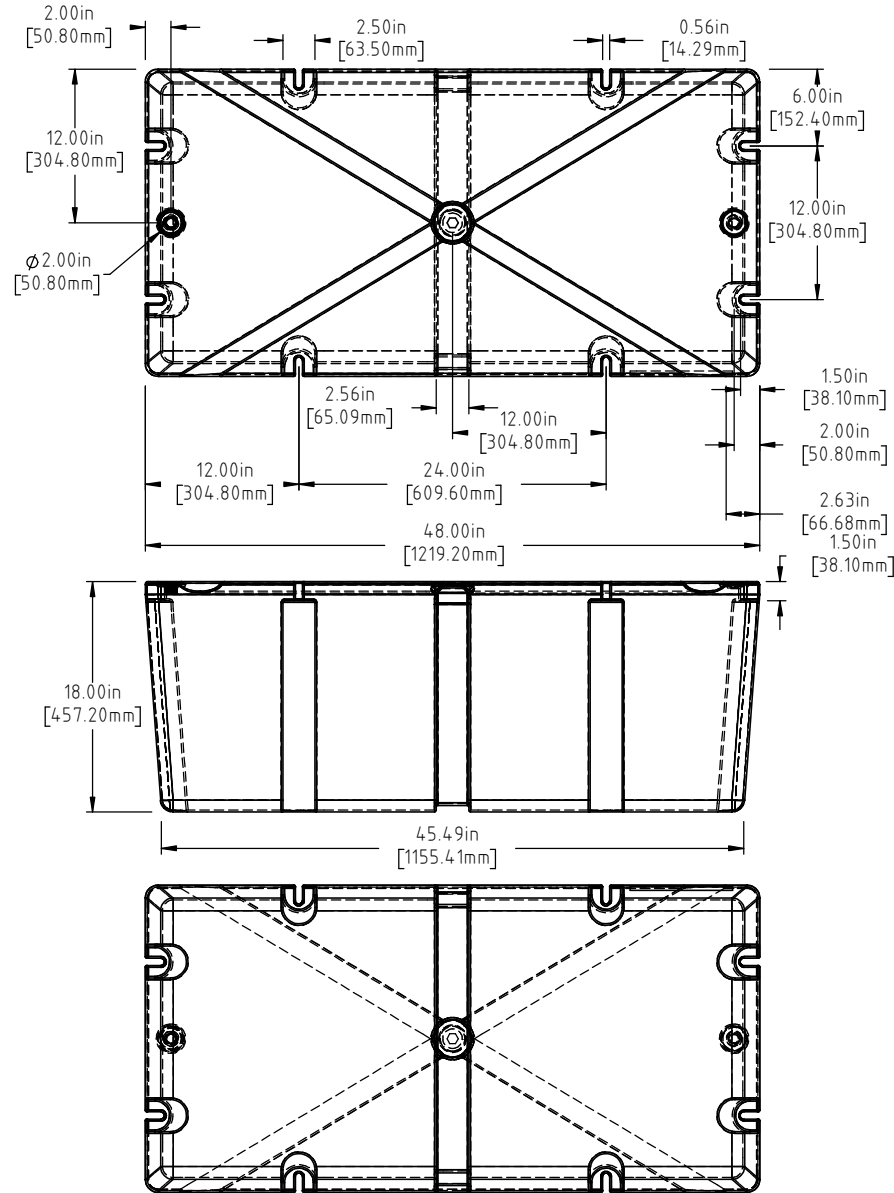



Copyright. All information furnished within this document, electronic file or design correspondence is the property of Den Hartog Industries, Inc. and shall not be used, disclosed to others or copied without the expressed written consent of Den Hartog Industries, Inc.



NOTE: BUOYANCY IS 628.00 LBS.(284.90 KG)

REV	DESCRIPTION	BY / DATE	CCN	DRAWN / DATE ADH 11/14/19	MATERIAL POLYETHYLENE
				APPRO. / DATE REH 11/21/19	
ALL DIMENSIONS ARE IN DECIMAL INCHES TOLERANCES UNLESS OTHERWISE SPECIFIED		THIRD ANGLE PROJECTION ANSI 14.5M		SHOT WEIGHT: 28 LBS.(12.70 KG.)	NOTES: 1.) AF 28 LBS.(12.70 KG.) 2.) FF 38 LBS.(17.24 KG.) 3.) 0.150 IN (3.81 mm) NOM. WALL
POLYETHYLENE	METAL DECIMAL ± .125" FRACTION ± 1/4" ANGLE ± 1°			SHIPPING WEIGHT: SEE NOTES	
±1% @ 68°F				FINISH:	



Den Hartog

INDUSTRIES, INC.

Ace Roto-Mold Injection Molding Blow Molding Sowjoy

4010 HOSPERS DRIVE S. BOX 425, HOSPERS, IOWA 51238-0425

DESCRIPTION 24 X 48 X 18 FLOAT	
SCALE N.S.	PART NO. 2448-18