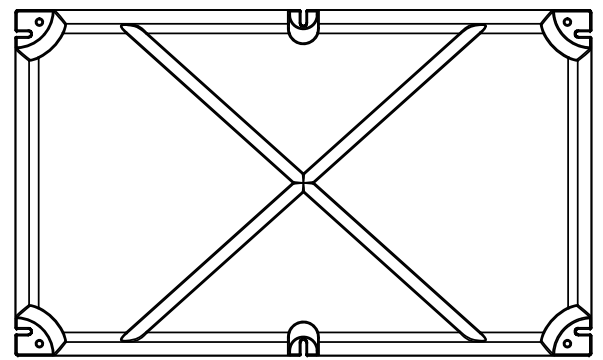
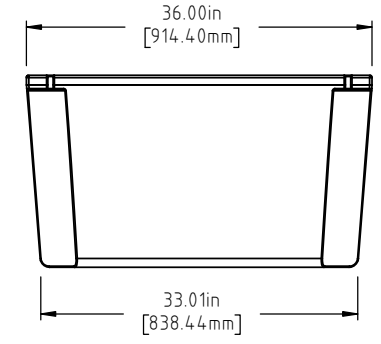
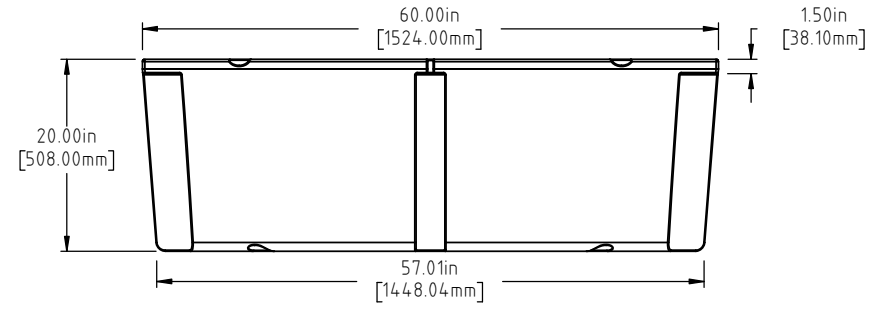
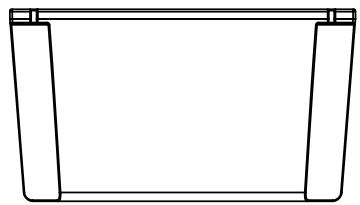
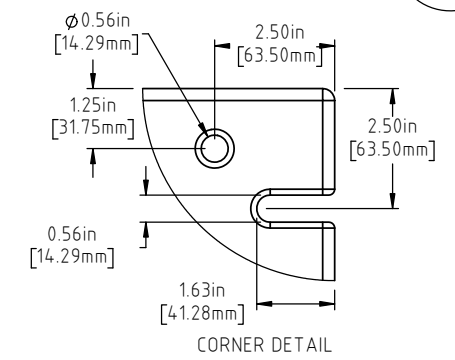
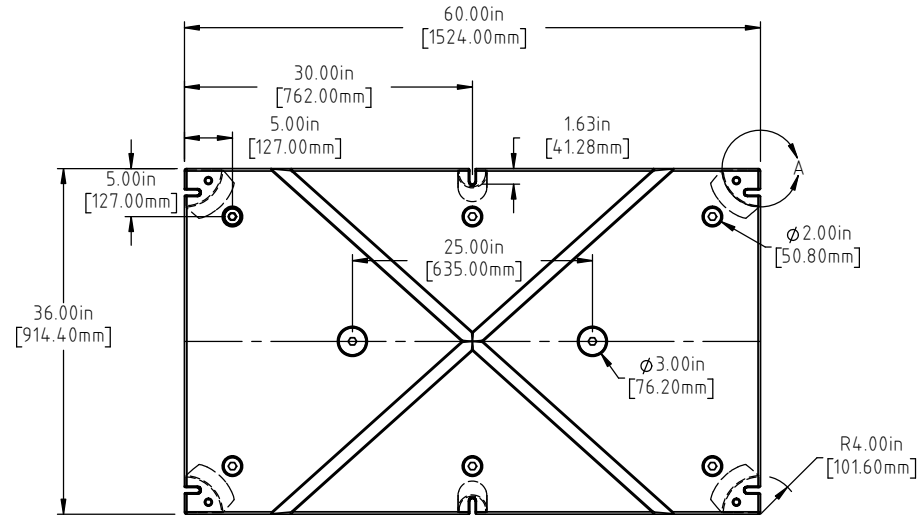


© DEN HARTOG INDUSTRIES, INC.

Copyright. All information furnished within this document, electronic file or design correspondence is the property of Den Hartog Industries, Inc. and shall not be used, disclosed to others or copied without the expressed written consent of Den Hartog Industries, Inc.

3660-20



NOTE: FOAM FILLED BUOYANCY IS 1328 LBS.(602.4 KG)

				DRAWN / DATE ADH 10/6/16	MATERIAL POLYETHYLENE
				APPROD. / DATE REH 10/7/16	
REV	DESCRIPTION	BY / DATE	CCN	SHOT WEIGHT: 52 LBS.	NOTES: 1.) AF = 52 LB.(23.6 KG) 2.) FF = 74 LB. (33.6 KG)
	ALL DIMENSIONS ARE IN DECIMAL INCHES TOLERANCES UNLESS OTHERWISE SPECIFIED POLYETHYLENE ±1% @ 68°F			SHIPPING WEIGHT: SEE NOTES	
	METAL DECIMAL ± .125" FRACTION ± 1/4" ANGLE ± 1°	THIRD ANGLE PROJECTION ANSI 14.5M		FINISH:	



Den Hartog
INDUSTRIES, INC.

Ace Roto-Mold Injection Molding Blow Molding Sowjoy

4010 HOSPERS DRIVE S. BOX 425, HOSPERS, IOWA 51238-0425

DESCRIPTION	36 x 60 x 20 FLOAT	
SCALE	N.S.	PART NO. 3660-20