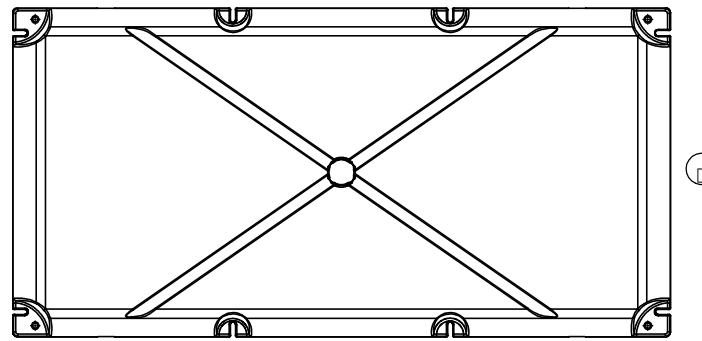
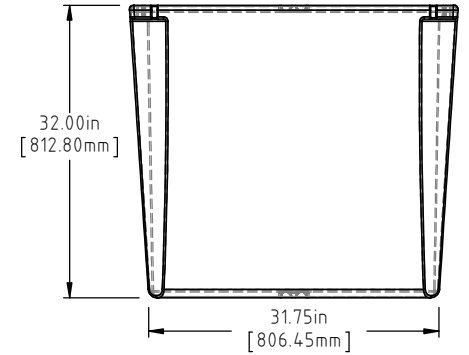
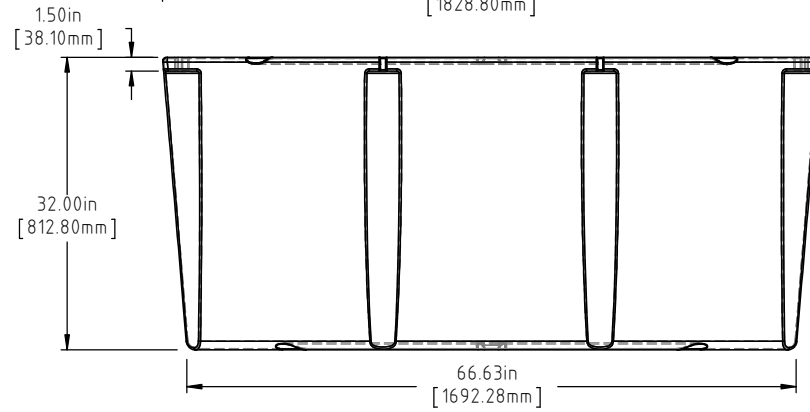
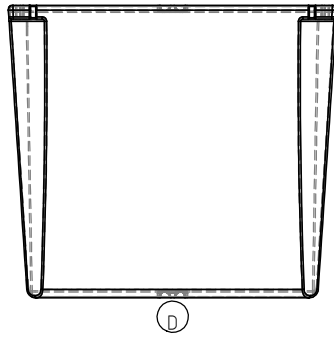
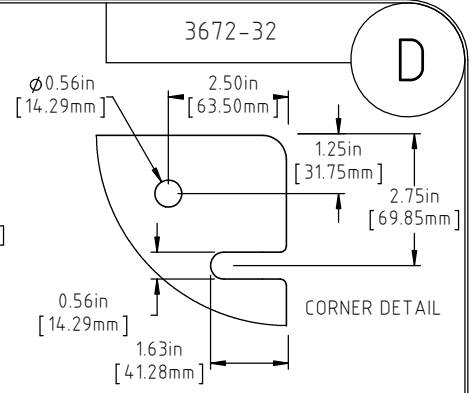
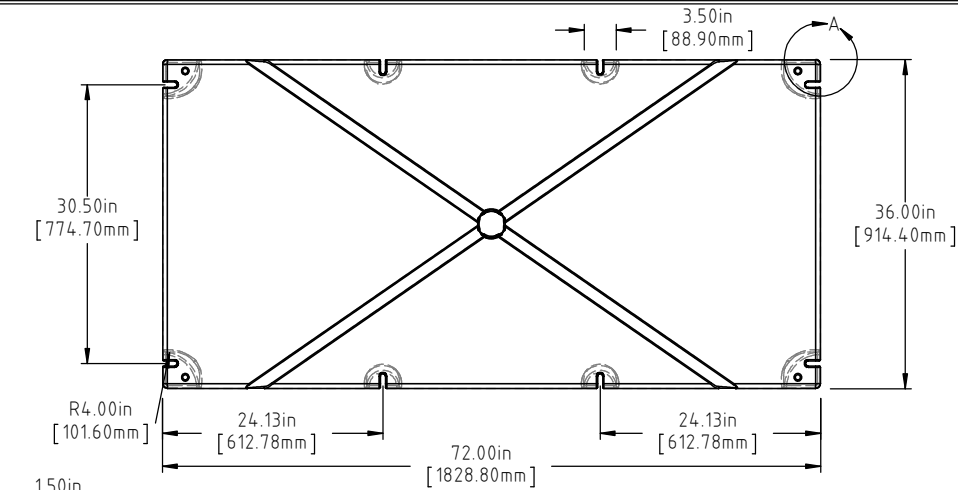


© DEN HARTOG INDUSTRIES, INC.

Copyright. All information furnished within this document, electronic file or design correspondence is the property of Den Hartog Industries, Inc. and shall not be used, disclosed to others or copied without the expressed written consent of Den Hartog Industries, Inc.



(A)(C)  
NOTE: BUOYANCY 2553.00 LBS.(1158.02 KG.)

D	BOTTOM/SIDE VIEWS ADDED TO PRINT.	ADH 12/4/14	2971
C	120 LBS WAS 107 LBS, 2553 LBS WAS 2544 LBS	ADH 6/22/12	2420
B	METRIC DIMENSIONS ADDED	ADH 6/17/08	1685
A	ADD BUOYANCY NOTE	GWC 1/9/07	
A	CHANGE WEIGHT FF WAS 115	GWC 1/9/07	
REV	DESCRIPTION	BY / DATE	CCN

DRAWN / DATE REH 1/5/01	MATERIAL POLYETHYLENE
APPRD. / DATE ADH 11/5/07	

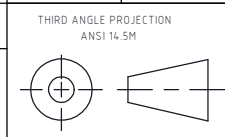


**Den Hartog**  
INDUSTRIES, INC.

Ace Roto-Mold Injection Molding Blow Molding Sowjoy

4010 HOSPERS DRIVE S. BOX 425, HOSPERS, IOWA 51238-0425

ALL DIMENSIONS ARE IN DECIMAL INCHES  
TOLERANCES UNLESS OTHERWISE SPECIFIED  
POLYETHYLENE  
±1% @ 68°F



THIRD ANGLE PROJECTION  
ANSI 14.5M

SHOT WEIGHT:  
72 LBS.(32.66 KG.)

SHIPPING WEIGHT:  
SEE NOTES

FINISH:

NOTES: (A)(C)  
1.) AF 72 LBS.(32.66 KG.)  
2.) FF 120 LBS.(54.43 KG.)  
3.) 0.175in(4.45mm) NOM. WALL

DESCRIPTION	36 X 72 X 32 FLOAT	
SCALE	N.S.	PART NO. 3672-32