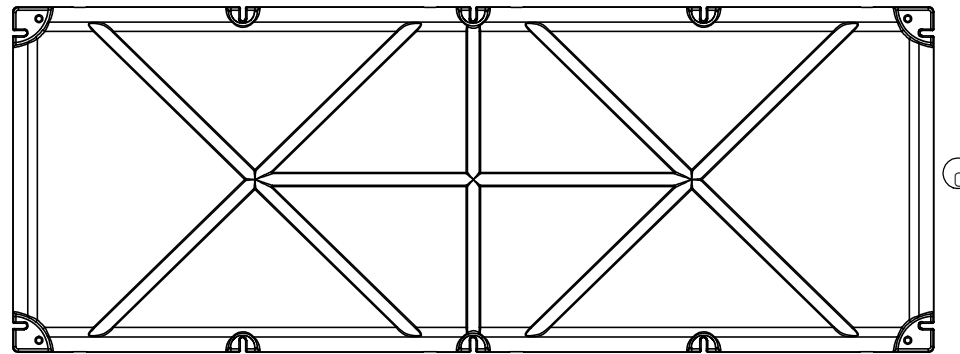
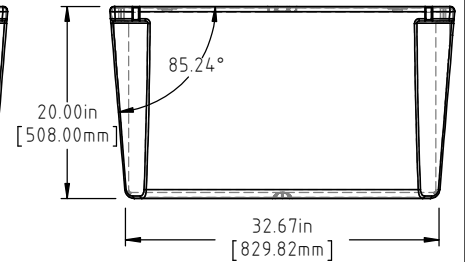
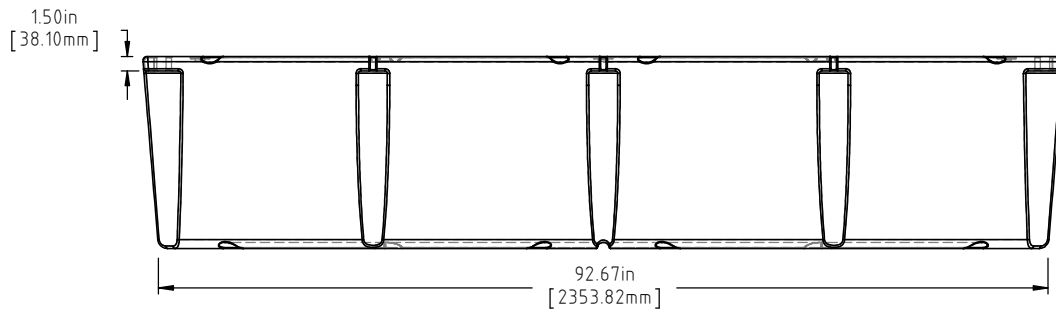
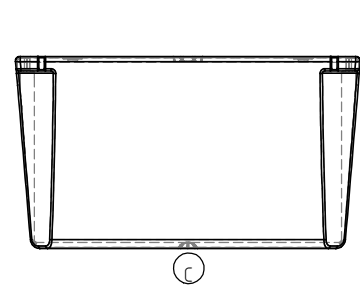
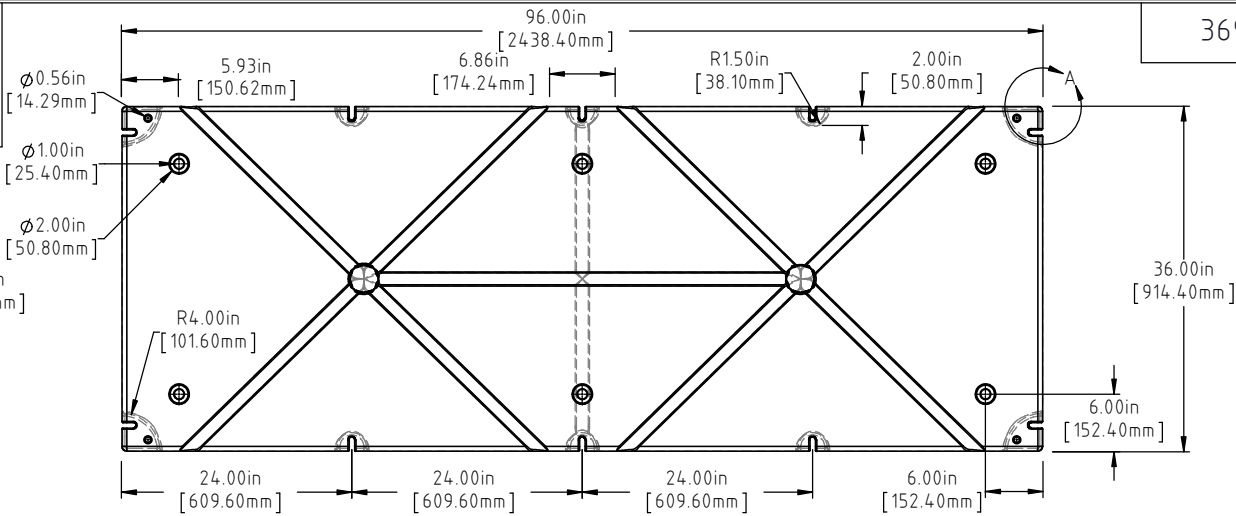
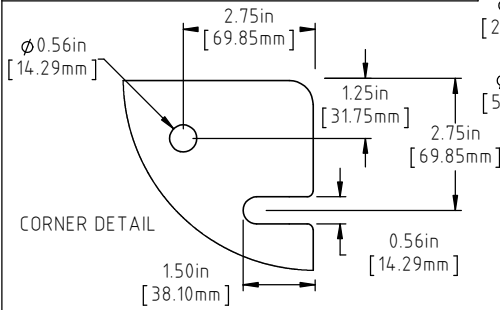


© DEN HARTOG INDUSTRIES, INC.

Copyright. All information furnished within this document, electronic file or design correspondence is the property of Den Hartog Industries, Inc. and shall not be used, disclosed to others or copied without the expressed written consent of Den Hartog Industries, Inc.


3696-20

C



NOTE: BUOYANCY 2172.00 LBS.(985.20 KG.)

C	BOTTOM AND SIDE VIEWS ADDED TO PRINT	ADH 12/4/14	2971	DRAWN / DATE	MATERIAL
B	112 LBS WAS 114 LBS, 2172 LBS WAS 2170 LBS	ADH 6/22/12	24-20	DHJ 11/12/06	
A	METRIC DIMENSIONS ADDED	ADH 6/18/08	1685	APPRD. / DATE	
REV	DESCRIPTION	BY / DATE	CCN	ADH 11/5/07	POLYETHYLENE
ALL DIMENSIONS ARE IN DECIMAL INCHES TOLERANCES UNLESS OTHERWISE SPECIFIED		THIRD ANGLE PROJECTION ANSI 14.5M		SHOT WEIGHT: 74 LBS.(33.57 KG.)	
POLYETHYLENE		METAL DECIMAL ± .125" FRACTION ± 1/4" ANGLE ± 1°		SHIPPING WEIGHT: SEE NOTES	1.) AF 74 LBS.(33.57 KG.)
±1% @ 68°F				FINISH:	2.) FF 112 LBS.(50.80 KG.)



Den Hartog
INDUSTRIES, INC.

Ace Roto-Mold Injection Molding Blow Molding Sowjoy

4010 HOSPERS DRIVE S. BOX 425, HOSPERS, IOWA 51238-0425

DESCRIPTION	36 X 96 X 20 FLOAT	
SCALE	N.S.	PART NO. 3696-20