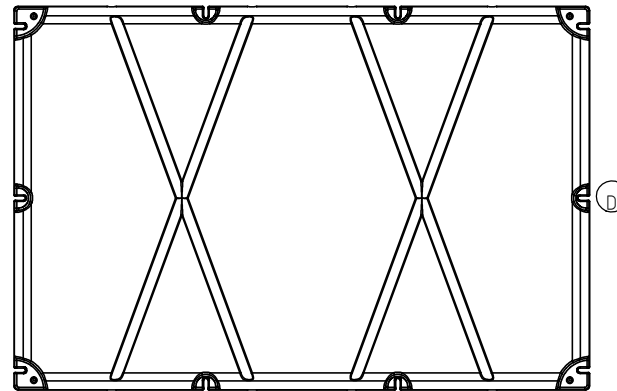
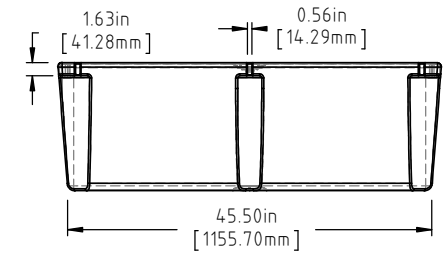
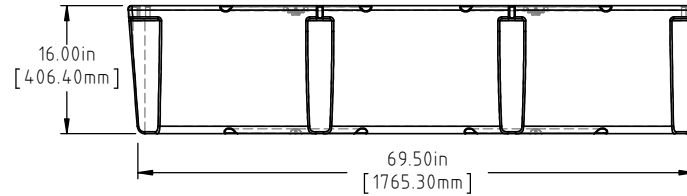
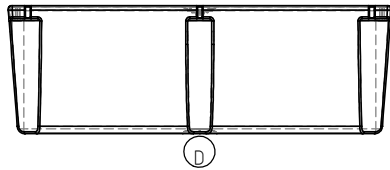
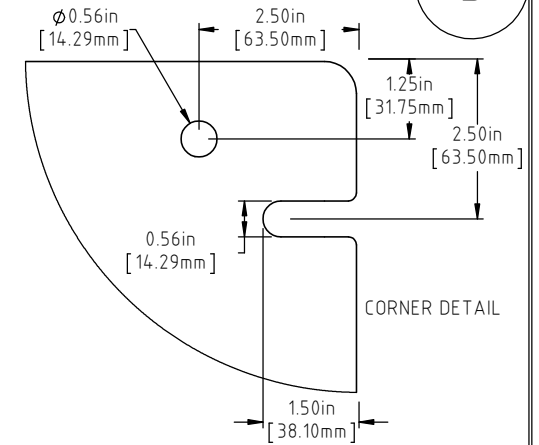
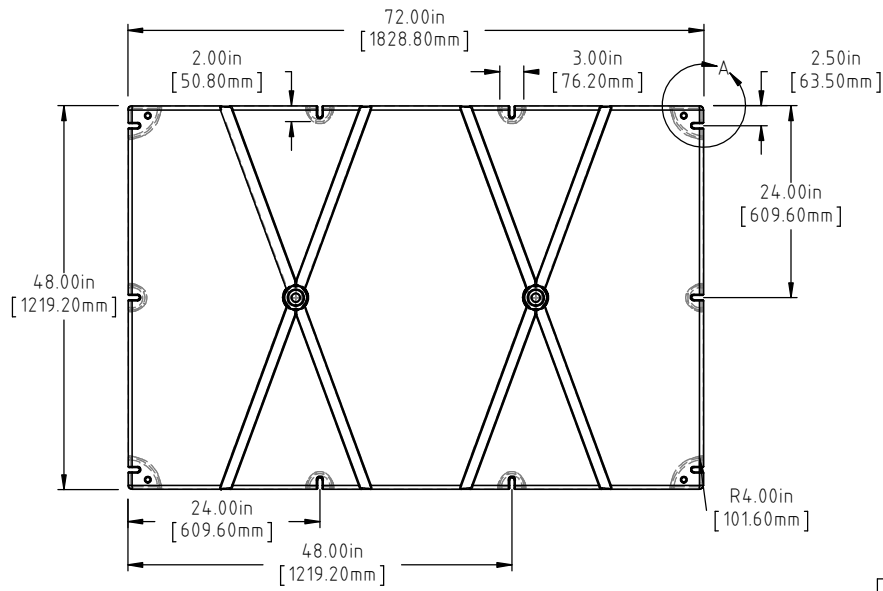


© DEN HARTOG INDUSTRIES, INC.

Copyright. All information furnished within this document, electronic file or design correspondence is the property of Den Hartog industries, Inc. and shall not be used, disclosed to others or copied without the expressed written consent of Den Hartog Industries, Inc.

4872-16

D



D	BOTTOM/SIDE VIEWS ADDED TO PRINT.	ADH 12/4/14	2971
C	98 LBS WAS 95 LBS, 1823 LBS WAS 1769 LBS	ADH 6/25/12	2420
B	METRIC DIMENSIONS ADDED	ADH 6/18/08	1685
A	ADD BUOYANCY NOTE	GWC 1/10/07	
A	CHANGE WEIGHTS FF WAS 97	GWC 1/10/07	
REV	DESCRIPTION	BY / DATE	CCN

DRAWN / DATE DEAN 11/18/94	MATERIAL POLYETHYLENE
APPRD. / DATE ADH 11/6/07	

(A)(C) NOTE: BUOYANCY IS 1823 LBS.(826.90 KG)

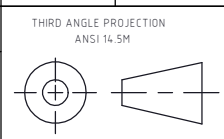


Den Hartog
INDUSTRIES, INC.

Ace Roto-Mold Injection Molding Blow Molding Sowjoy

4010 HOSPERS DRIVE S. BOX 425, HOSPERS, IOWA 51238-0425

ALL DIMENSIONS ARE IN DECIMAL INCHES
TOLERANCES UNLESS OTHERWISE SPECIFIED
POLYETHYLENE METAL
DECIMAL ± .125"
FRACTION ± 1/4"
ANGLE ± 1°
±1% @ 68°F



SHOT WEIGHT: 65 LBS. (29.48 KG.)	NOTES: (A)(C) 1.) AF 65 LBS. (29.48 KG.) 2.) FF 98 LBS. (44.45 KG.) 3.) 0.150 IN (3.81 mm) NOM. WALL
SHIPPING WEIGHT: SEE NOTES	
FINISH:	

DESCRIPTION 48 X 72 X 16 FLOAT	SCALE N.S.	PART NO. 4872-16
-----------------------------------	---------------	---------------------