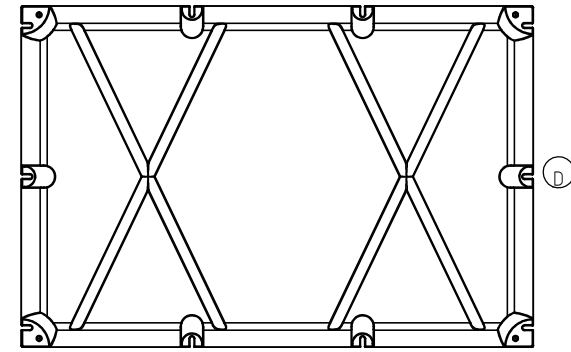
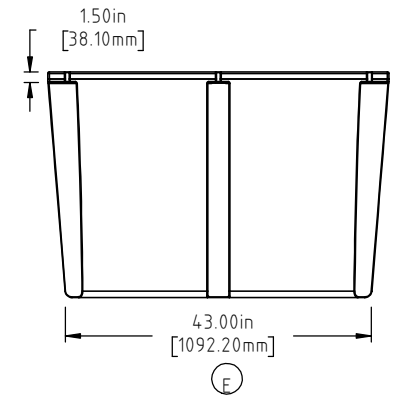
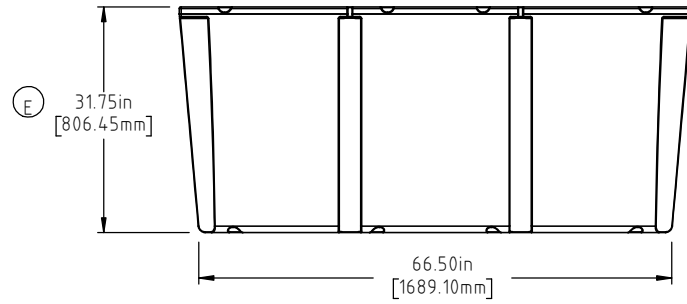
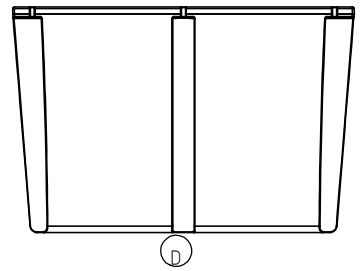
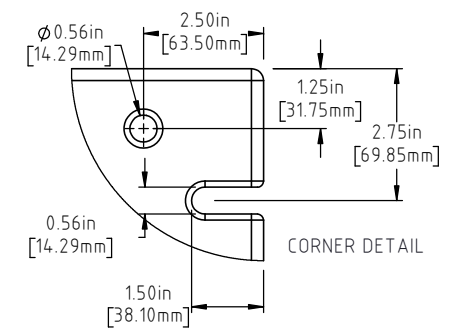
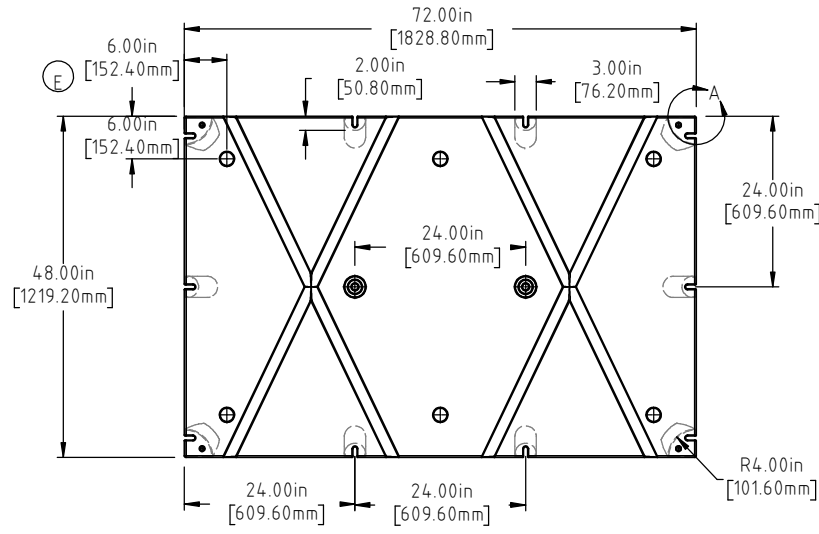


Copyright. All information furnished within this document, electronic file or design correspondence is the property of Den Hartog Industries, Inc. and shall not be used, disclosed to others or copied without the expressed written consent of Den Hartog Industries, Inc.



E	VENT/FOAMING LOCATIONS SHOWN ON PRINT. 31.75" WAS 32.00", 43.00" WAS 43.50"	ADH 11/16/16	3321
D	BOTTOM/SIDE VIEWS ADDED TO PRINT	ADH 12/4/14	2971
C	154 LBS WAS 153 LBS, 3457 LBS WAS 3365 LBS	ADH 6/26/12	2420
B	METRIC DIMENSIONS ADDED	ADH 6/23/08	1685
A	ADD BUOYANCY NOTE	GWC 1/11/07	
A	CHANGE WEIGHTS: FF WAS 172	GWC 1/11/07	
REV	DESCRIPTION	BY / DATE	CCN

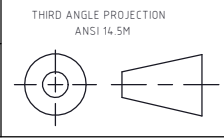
DRAWN / DATE DEAN 9/21/95	MATERIAL POLYETHYLENE
APPRD. / DATE ADH 11/6/07	



Den Hartog
INDUSTRIES, INC.

Ace Roto-Mold Injection Molding Blow Molding Sowjoy
4010 HOSPERS DRIVE S. BOX 425, HOSPERS, IOWA 51238-0425

ALL DIMENSIONS ARE IN DECIMAL INCHES TOLERANCES UNLESS OTHERWISE SPECIFIED
POLYETHYLENE
±1% @ 68°F



SHOT WEIGHT: 95 LBS. (43.09 KG)
SHIPPING WEIGHT: SEE NOTES
FINISH:

NOTES: (A) (C)
1.) AF 95 LBS (43.09 KG)
2.) FF 154 LBS (69.85 KG)
3.) .150IN (3.82mm) NOM. WALL

DESCRIPTION	48 X 72 X 32 FLOAT	
SCALE	N.S.	PART NO. 4872-32