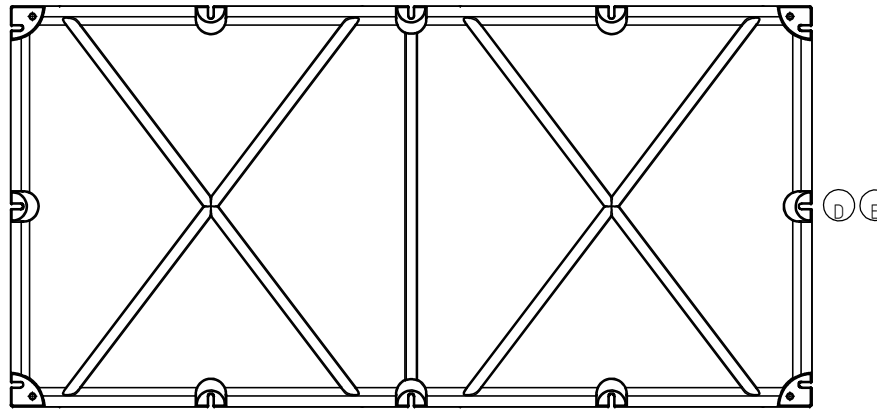
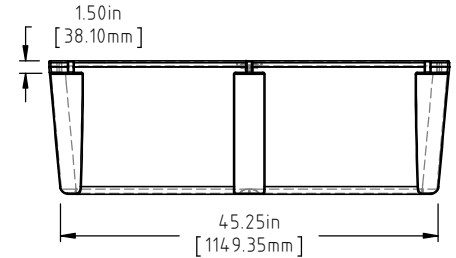
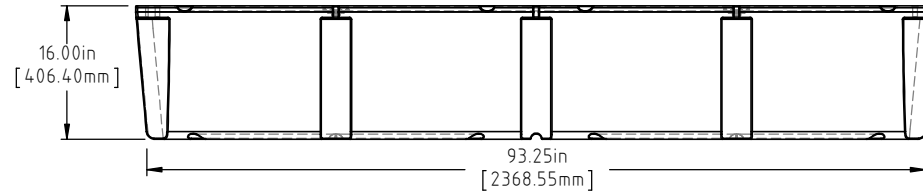
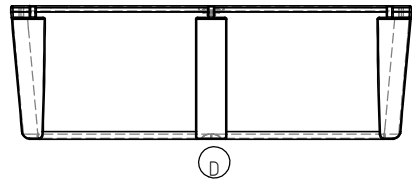
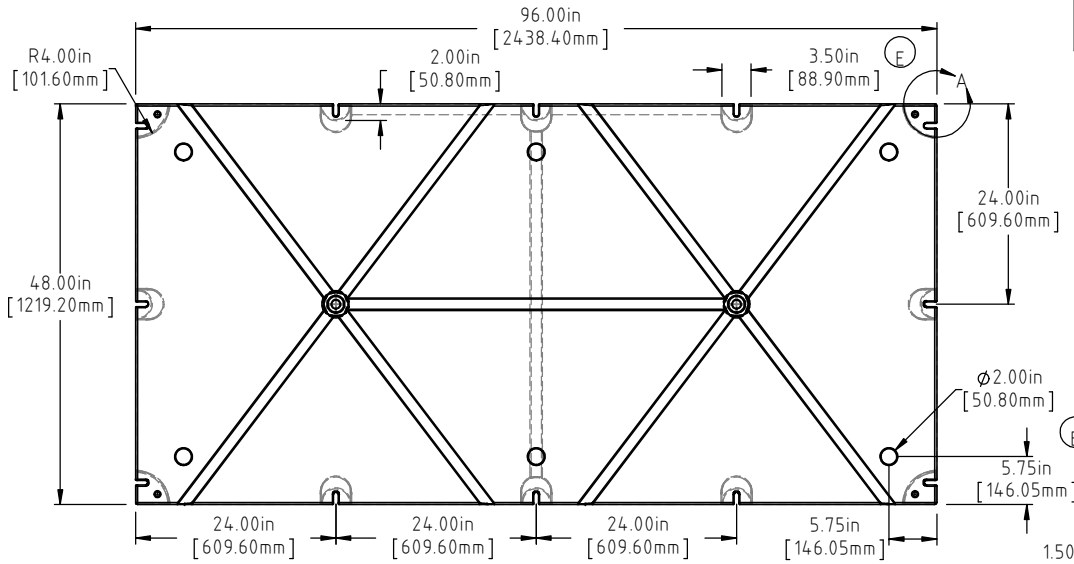
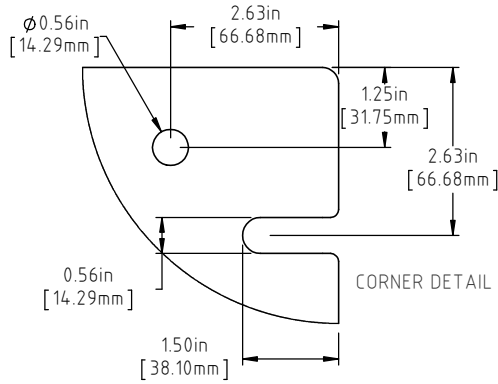


Copyright. All information furnished within this document, electronic file or design correspondence is the property of Den Hartog Industries, Inc. and shall not be used, disclosed to others or copied without the expressed written consent of Den Hartog Industries, Inc.



(A) (C)
NOTE: BUOYANCY 2396.00 LBS.(1086.81 KG.)

| | | | |
|-----|--|-------------|------|
| E | DRAFT ON COLUMNS, SPINWELD FLATS SHOWN ON PRINT. 3.50" WAS 3.00" | ADH 5/19/15 | 3072 |
| D | BOTTOM/SIDE VIEWS ADDED TO PRINT. | ADH 12/4/14 | 2971 |
| C | 131 LBS WAS 124 LBS, 2396 LBS WAS 2420 LBS | ADH 6/27/12 | 2420 |
| B | METRIC DIMENSIONS ADDED | ADH 6/23/08 | 1685 |
| A | ADD BUOYANCY NOTE | GWC 1/11/07 | |
| A | CHANGE WEIGHT AF WAS 82 FF WAS 134 | GWC 1/11/07 | |
| 1 | CHANGE WEIGHT | 11/17/94 | |
| REV | DESCRIPTION | BY / DATE | CCN |

| | |
|---------------|--------------|
| DRAWN / DATE | MATERIAL |
| DEAN 11/17/94 | POLYETHYLENE |
| APPRD. / DATE | |
| ADH 11/6/07 | |

| | |
|--------------------|-------------------------------|
| SHOT WEIGHT: | NOTES: (A) (C) |
| 84 LBS.(38.10 KG.) | 1.) AF 84 LBS.(38.10 KG.) |
| SHIPPING WEIGHT: | 2.) FF 131 LBS.(59.42 KG) |
| SEE NOTES | 3.) 0.150in(3.81mm) NOM. WALL |
| FINISH: | |

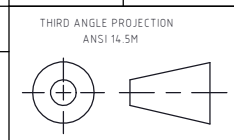


Den Hartog
INDUSTRIES, INC.

Ace Roto-Mold Injection Molding Blow Molding Sowjoy

4010 HOSPERS DRIVE S. BOX 425, HOSPERS, IOWA 51238-0425

| | |
|--|--|
| ALL DIMENSIONS ARE IN DECIMAL INCHES TOLERANCES UNLESS OTHERWISE SPECIFIED | |
| POLYETHYLENE | METAL DECIMAL ± .125" FRACTION ± 1/4" ANGLE ± 1° |
| ±1% @ 68°F | |



| | |
|-------------|--------------------|
| DESCRIPTION | 48 X 96 X 16 FLOAT |
| SCALE | N.S. |
| PART NO. | 4896-16 |