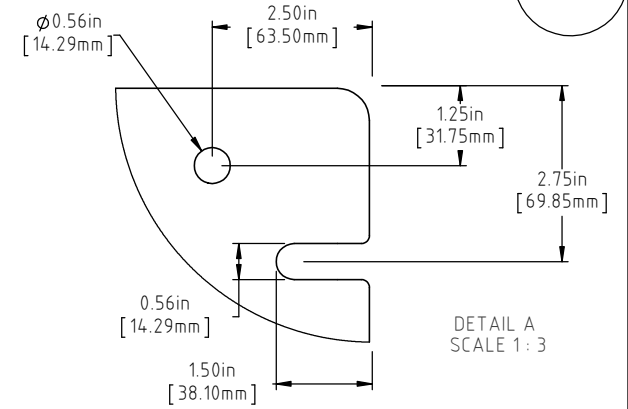
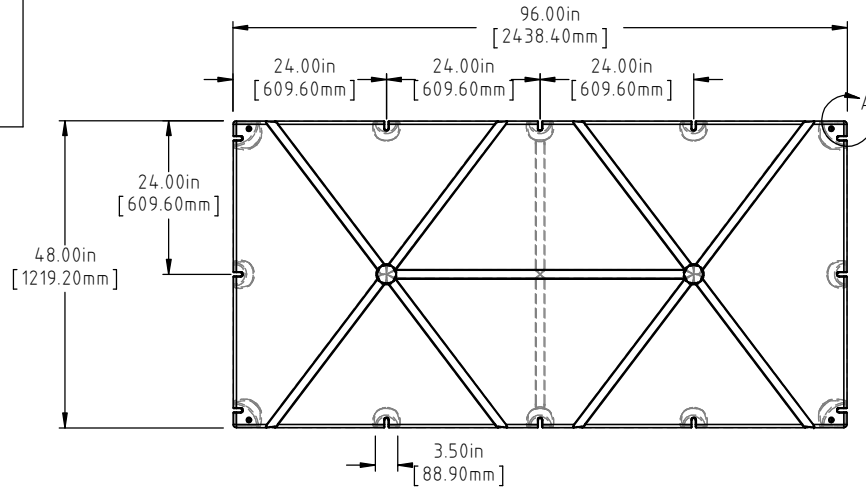


© DEN HARTOG INDUSTRIES, INC.

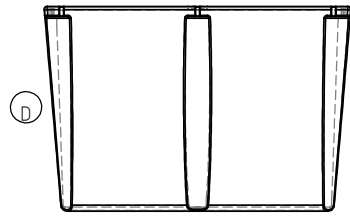
Copyright. All information furnished within this document, electronic file or design correspondence is the property of Den Hartog Industries, Inc. and shall not be used, disclosed to others or copied without the expressed written consent of Den Hartog Industries, Inc.

4896-32

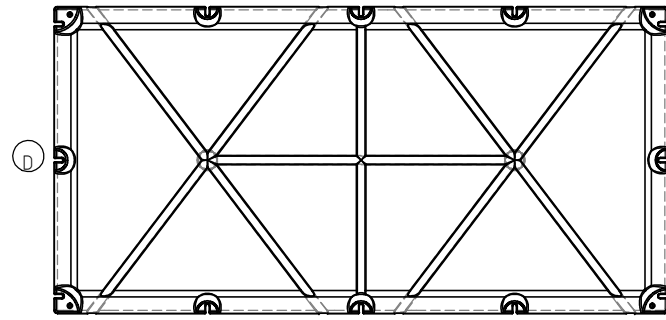
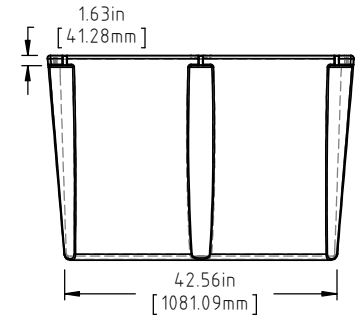
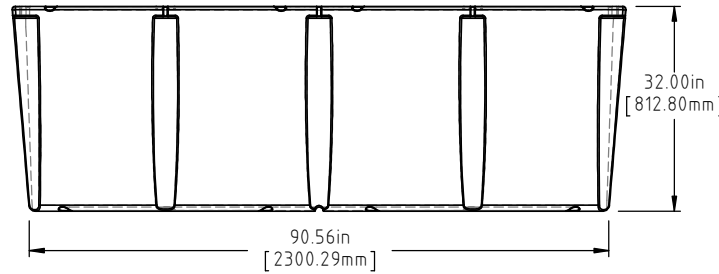
D



DETAIL A
SCALE 1 : 3



D



D

A D

NOTE: BUOYANCY 4631.00 LBS.(2100.59 KG.)

D	BOTTOM AND SIDE VIEWS ADDED TO PRINT	ADH 11/13/14	2959
C	193 LBS WAS 188 LBS, 4631 LBS WAS 4585 LBS	ADH 6/28/12	2420
B	CORNER DETAIL ADDED	ADH 8/28/08	1710
A	ADD BUOYANCY NOTE	GWC 1/11/07	
REV	DESCRIPTION	BY / DATE	CCN
ALL DIMENSIONS ARE IN DECIMAL INCHES TOLERANCES UNLESS OTHERWISE SPECIFIED		THIRD ANGLE PROJECTION ANSI 14.5M	
POLYETHYLENE			
±1% @ 68°F		METAL DECIMAL ± .125" FRACTION ± 1/4" ANGLE ± 1°	

DRAWN / DATE DHJ 8/29/03	MATERIAL POLYETHYLENE
APPRO. / DATE ADH 11/6/07	
SHOT WEIGHT: 110 LBS.(49.90 KG.)	NOTES: C 1.) AF 110 LBS.(49.90 KG.) 2.) FF 193 LBS.(87.54 KG.) 3.) 0.150in(3.81mm) NOM. WALL
SHIPPING WEIGHT: SEE NOTES	
FINISH:	

Den Hartog

INDUSTRIES, INC.

Ace Roto-Mold Injection Molding Blow Molding Sowjoy

4010 HOSPERS DRIVE S. BOX 425, HOSPERS, IOWA 51238-0425

DESCRIPTION 48 X 96 X 32 FLOAT	
SCALE N.S.	PART NO. 4896-32