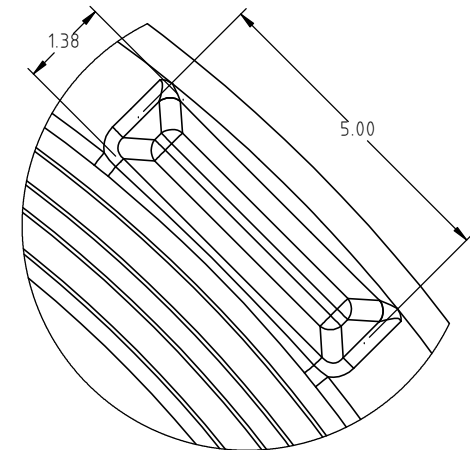
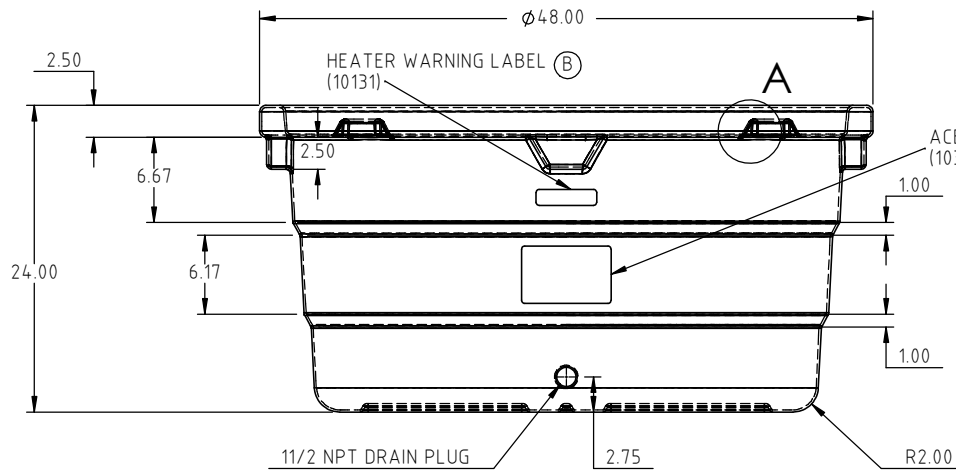


DETAIL A
SCALE 1:3



DETAIL B
SCALE 1:3

				DRAWN / DATE ADH 5/7/08	MATERIAL 1.) 10577 - RESIN, GREEN -SPRUCE, 5 MELT
B	LABEL LOCATION CORRECTED, SHIPPING WEIGHT ADDED	ADH 12/11/12	2539	APPRD. / DATE REH 5/8/08	
A	LABEL ADDED, DRAWING TEMPLATE UPDATED	ADH 8/31/09	1916		
REV	DESCRIPTION	BY / DATE	CCN		
ALL DIMENSIONS ARE IN DECIMAL INCHES TOLERANCES UNLESS OTHERWISE SPECIFIED		THIRD ANGLE PROJECTION ANSI 14.5M		SHOT WEIGHT: 32 LBS	NOTES:
POLYETHYLENE		METAL DECIMAL $\pm .125$ " FRACTION $\pm 1/4$ " ANGLE $\pm 1^\circ$		SHIPPING WEIGHT: 30 LBS	
$\pm 1\%$ @ 68°F				FINISH: (B)	



Den Hartog
INDUSTRIES, INC.

Ace Roto-Mold Injection Molding Blow Molding Sowjoy

4010 HOSPERS DRIVE S. BOX 425, HOSPERS, IOWA 51238-0425

DESCRIPTION ACE / R42 POLY STOCK TANK	
SCALE N.S.	PART NO. ARM-19455