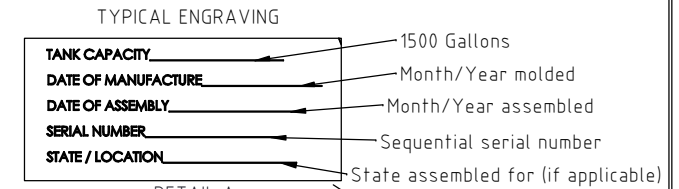
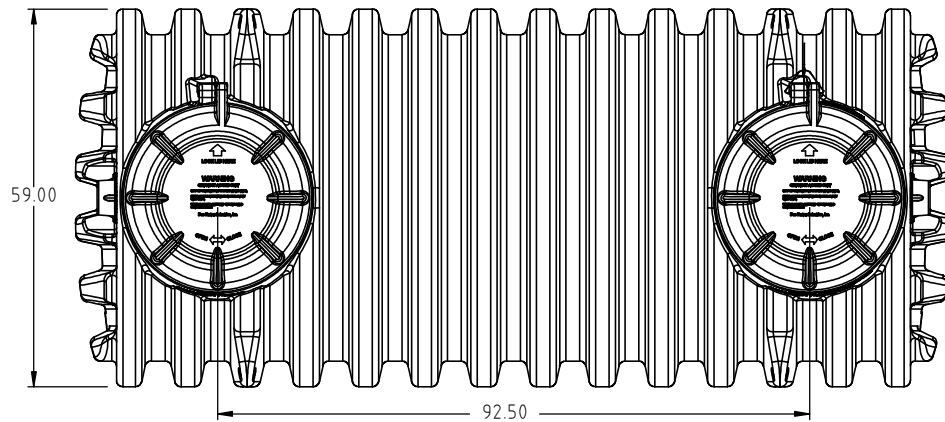
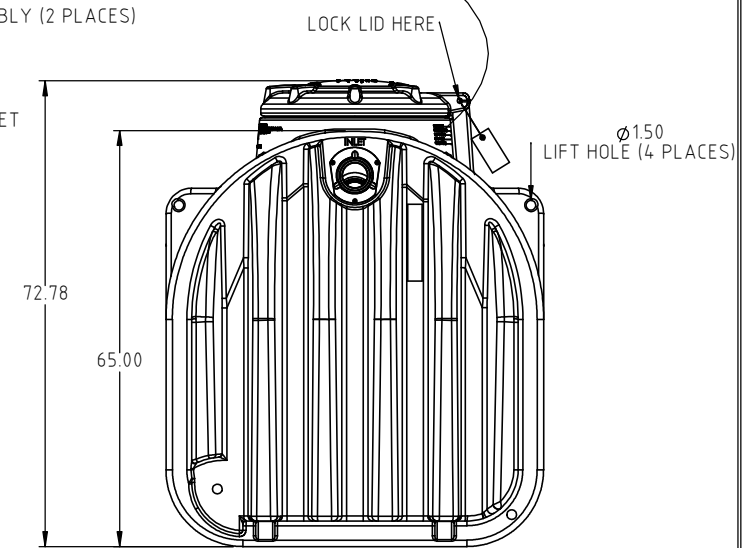
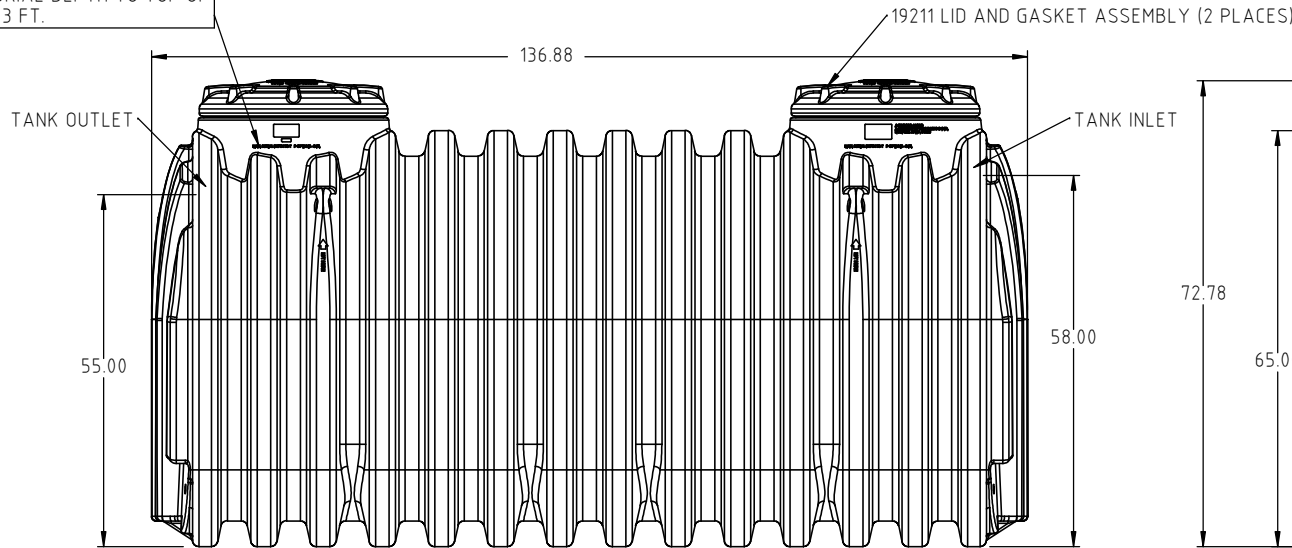


Copyright. All information furnished within this document, electronic file or design correspondence is the property of Den Hartog Industries, Inc. and shall not be used, disclosed to others or copied without the expressed written consent of Den Hartog Industries, Inc.



DETAIL A
SCALE 1:5

MAX. BURIAL DEPTH TO TOP OF TANK - 3 FT.



				DRAWN / DATE REH 3/15/04	MATERIAL SEE COMPONENTS
B	550.00 LBS WAS 500.00 LBS. PRINT LAYOUT UPDATED.	ADH 3/1/17	3358	APPRD. / DATE REH 3/15/04	
A	ADD PUBLICATION REF.	NVE 9/30/05			
REV	DESCRIPTION	BY / DATE	CCN		
ALL DIMENSIONS ARE IN DECIMAL INCHES TOLERANCES UNLESS OTHERWISE SPECIFIED		THIRD ANGLE PROJECTION ANSI 14.5M		SHOT WEIGHT: 550.00 LBS.	NOTES: 1.) TANK NOM. WALL @ .250 2.) YELLOW COLOR
POLYETHYLENE				SHIPPING WEIGHT: 584.00 LBS.	
±1% @ 68°F				FINISH:	



Den Hartog
INDUSTRIES, INC.

Ace Roto-Mold Injection Molding Blow Molding Sowjoy

4010 HOSPERS DRIVE S. BOX 425, HOSPERS, IOWA 51238-0425

DESCRIPTION	1500 GAL. SINGLE COMPARTMENT SEPTIC TANK ASSEMBLY	
SCALE	N.S.	PART NO. AST-1500-1