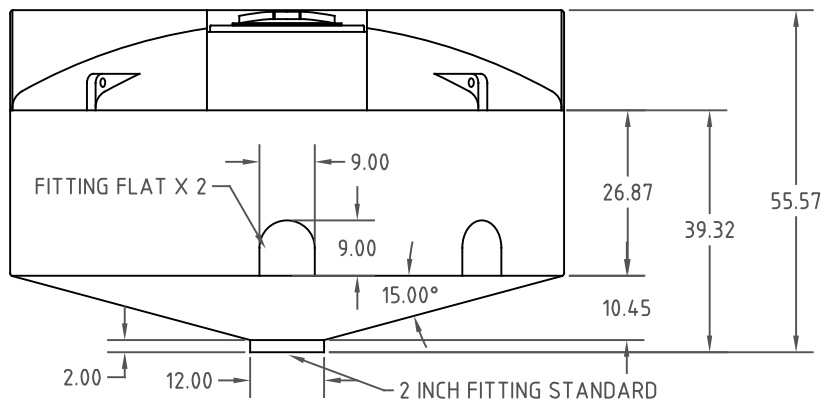
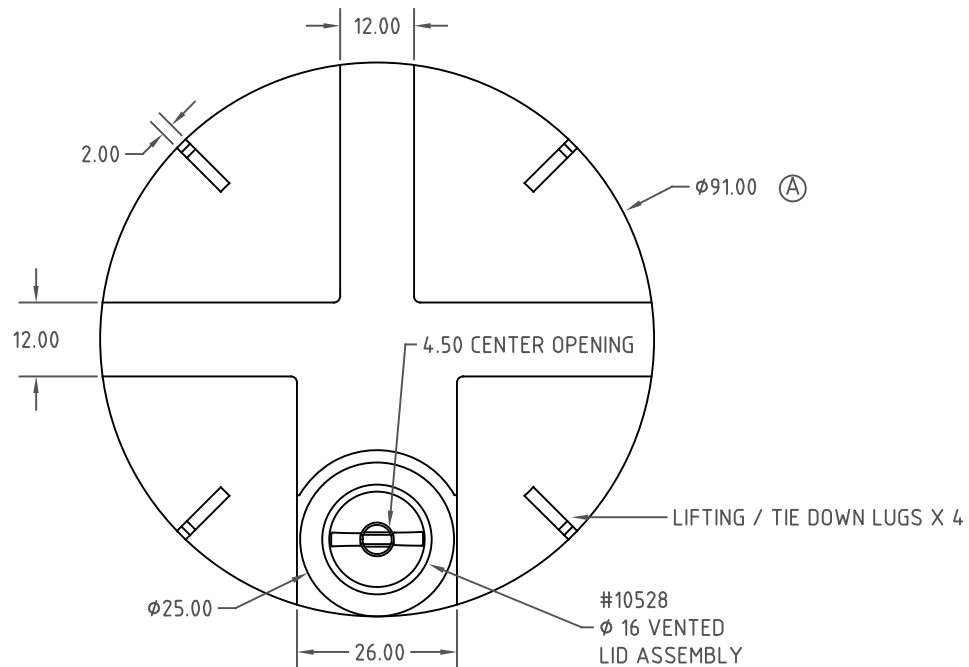


Copyright. All information furnished within this document, electronic file or design correspondence is the property of Den Hartog Industries, Inc. and shall not be used, disclosed to others or copied without the expressed written consent of Den Hartog Industries, Inc.



DRAWN / DATE DHJ 1/7/11		MATERIAL 104-20	
APPRD. / DATE REH 2/2/11			
SHOT WEIGHT: 210 LBS.		NOTES: 1. THICKNESS @ BOTTOM SIDE WALL .280	
SHIPPING WEIGHT: 212 LBS.			
FINISH:			



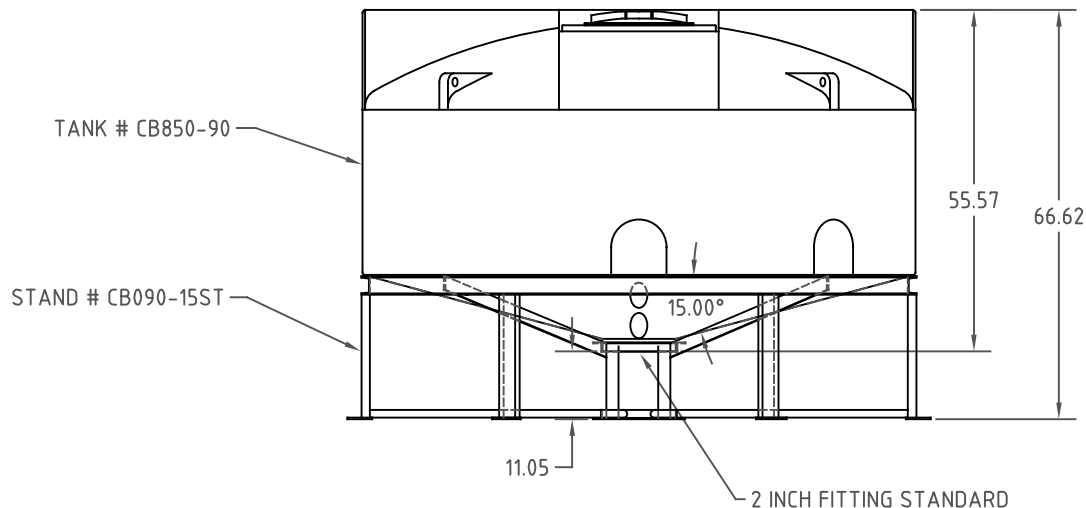
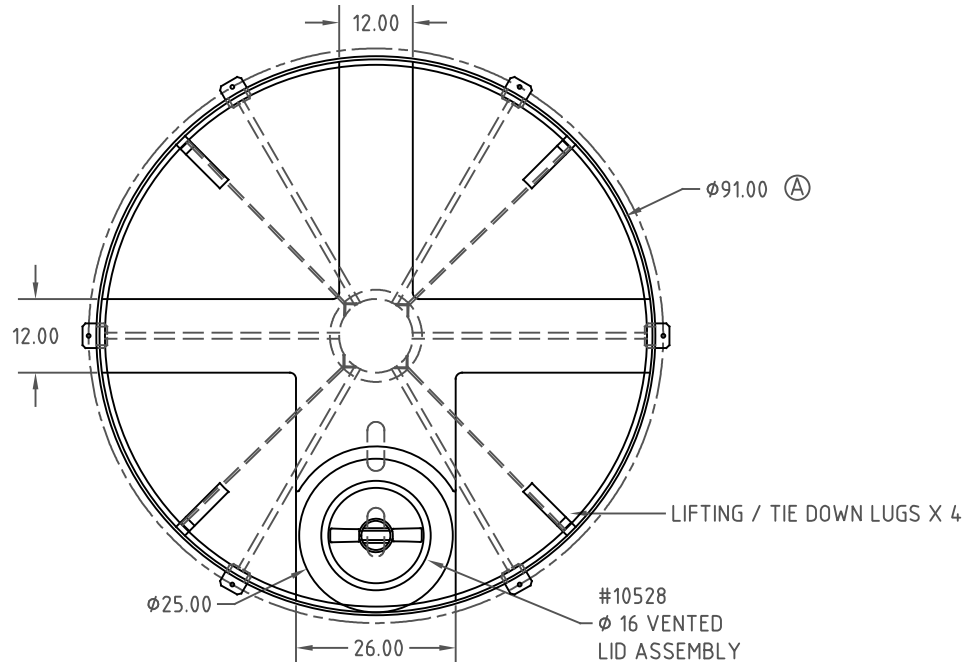
Den Hartog
INDUSTRIES, INC.

Ace Roto-Mold Injection Molding Blow Molding Sow-Joy
4010 HOSPERS DRIVE S. BOX 425, HOSPERS, IOWA 51238-0425

A	WAS 90	DHJ 5/11/17	3385
REV	DESCRIPTION	BY / DATE	CCN
ALL DIMENSIONS ARE IN DECIMAL INCHES TOLERANCES UNLESS OTHERWISE SPECIFIED		THIRD ANGLE PROJECTION ANSI 14.5M	
POLYETHYLENE ±1% @ 68° F			
METAL DECIMAL ± .125" FRACTION ± 1/4" ANGLE ± 1°			

DESCRIPTION 850 GALLON 90" DIA. X 15° CONE BOTTOM TANK W/ INDUSTRIAL TOP	
SCALE N.S.	PART NO. CB0850-90

Copyright. All information furnished within this document, electronic file or design correspondence is the property of Den Hartog industries, Inc. and shall not be used, disclosed to others or copied without the expressed written consent of Den Hartog Industries, Inc.



		DRAWN / DATE		MATERIAL	
		DHJ 3/9/11		TANK 10420 POLYETHYLENE	
A		DHJ 5/11/17		STAND MILD STEEL BLACK POWDER COAT	
WAS 90		3385		REH 3/9/11	
REV	DESCRIPTION	BY / DATE	CCN	SHIPPING WEIGHT: 592 LBS.	
ALL DIMENSIONS ARE IN DECIMAL INCHES TOLERANCES UNLESS OTHERWISE SPECIFIED		THIRD ANGLE PROJECTION ANSI 14.5M		NOTES: 1. THICKNESS @ BOTTOM SIDE WALL .280	
POLYETHYLENE		METAL		FINISH:	
±1% @ 68° F		DECIMAL ± .125" FRACTION ± 1/4" ANGLE ± 1°			



Den Hartog
INDUSTRIES, INC.

Ace Roto-Mold Injection Molding Blow Molding SowJoy
4010 HOSPERS DRIVE S. BOX 425, HOSPERS, IOWA 51238-0425

DESCRIPTION 850 GALLON 90" DIA. X 15° CONE BOTTOM TANK W/ INDUSTRIAL TOP AND STAND	
SCALE N.S.	PART NO. CB0850-90+90-15ST