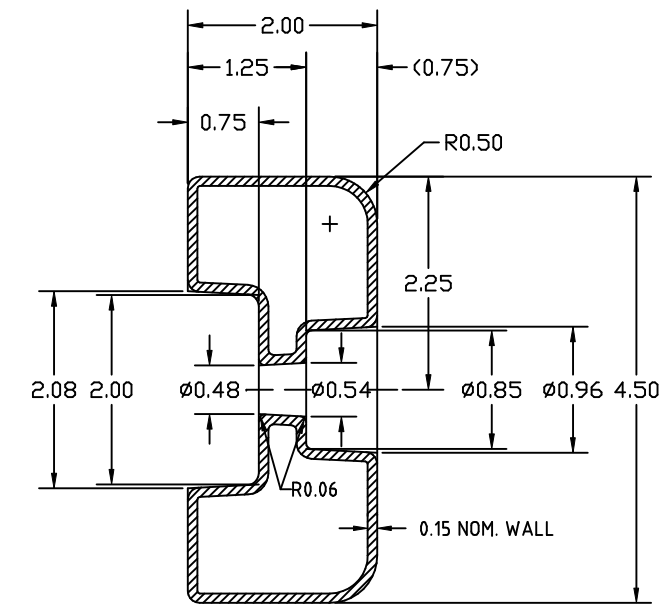


PROPRIETARY DATA

PROPERTY OF ACE ROTO-MOLD MFG., INC. INFORMATION FURNISHED HEREIN IS THE PROPERTY OF ACE ROTO-MOLD MFG., INC. AND SHALL NOT BE USED, DISCLOSED TO OTHERS, OR COPIED WITHOUT THE EXPRESSED WRITTEN CONSENT OF ACE ROTO-MOLD MFG., INC. ALL RIGHTS RESERVED.

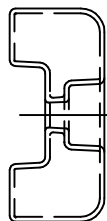
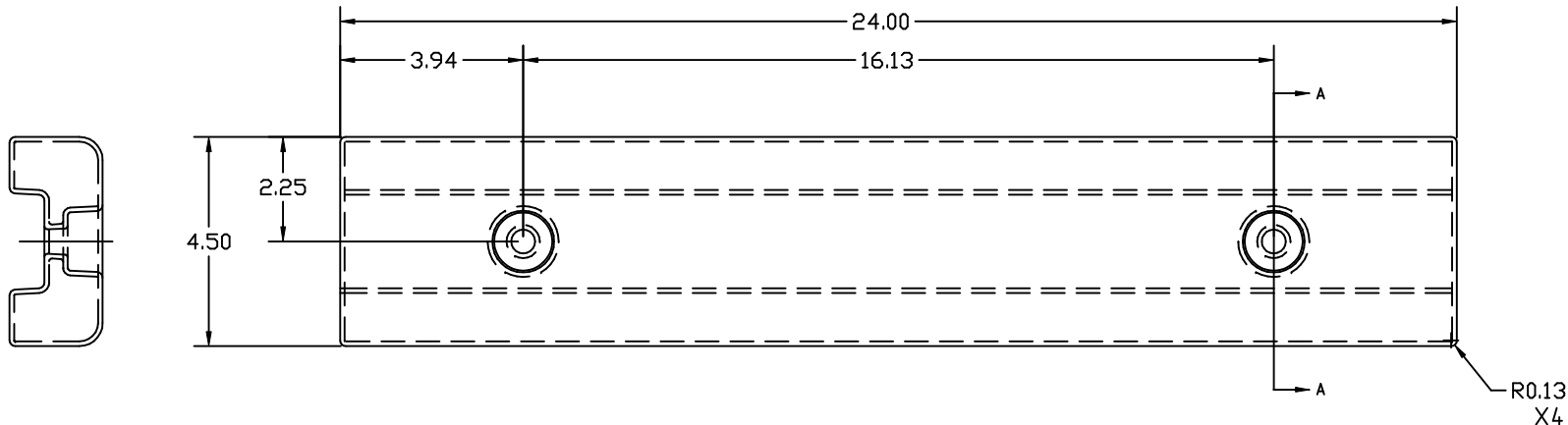
DC-6ST-WE

A



A-A  
X2

ALL RADII .13  
UNLESS SPECIFIED



				DRAWN / DATE NVE 3/30/06		MATERIAL FLEX $\text{\textcircled{A}}$ MU736-00 OR EQUAL EVA @ 15 LB.	
				APPRD. / DATE REH/4/17/06		FIRM $\text{\textcircled{A}}$ MOBIL 135 OR EQUAL @ 15 LB.	
REV	DESCRIPTION	DATE	APPRD	THIRD ANGLE PROJECTION ANSI 14.5M			
ALL DIMENSIONS ARE IN DECIMAL INCHES TOLERANCES UNLESS OTHERWISE SPECIFIED $\pm$ 1% @ 68° F						NOTES: 1. NOM. WALL @ .150 2. BLACK OR WHITE COLOR 3. ADD U.V. INHIBITOR TO EVA RESIN MIX	

<p>ACE ROTO-MOLD A DIVISION OF DEN HARTOG INDUSTRIES, INC. 4010 HOSPERS DRIVE S. BOX 425, HOSPERS, IOWA 51238-0421</p>	
CLIENT / DESCRIPTION ACE NO. 6 DOCK CUSHION X 2 FT.	
SCALE N.S.	PART NO. DC-6ST-WE