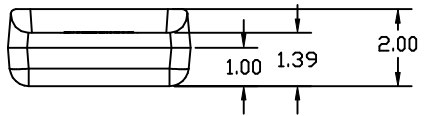
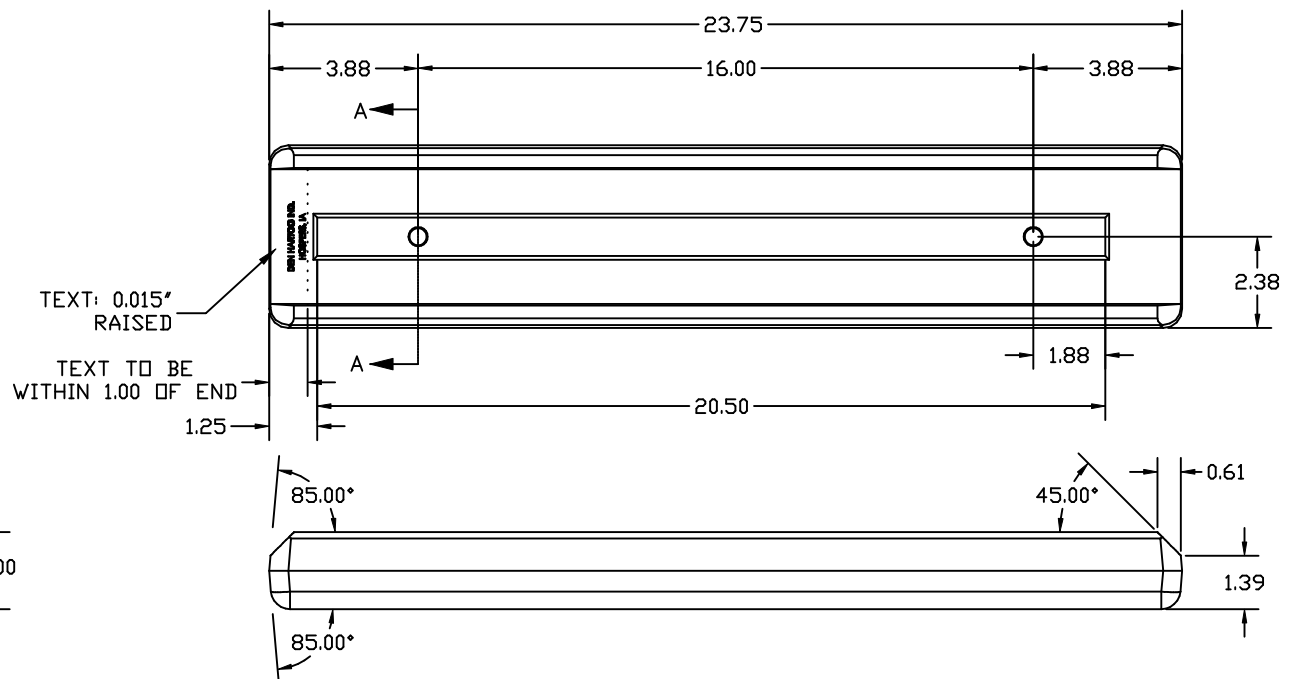
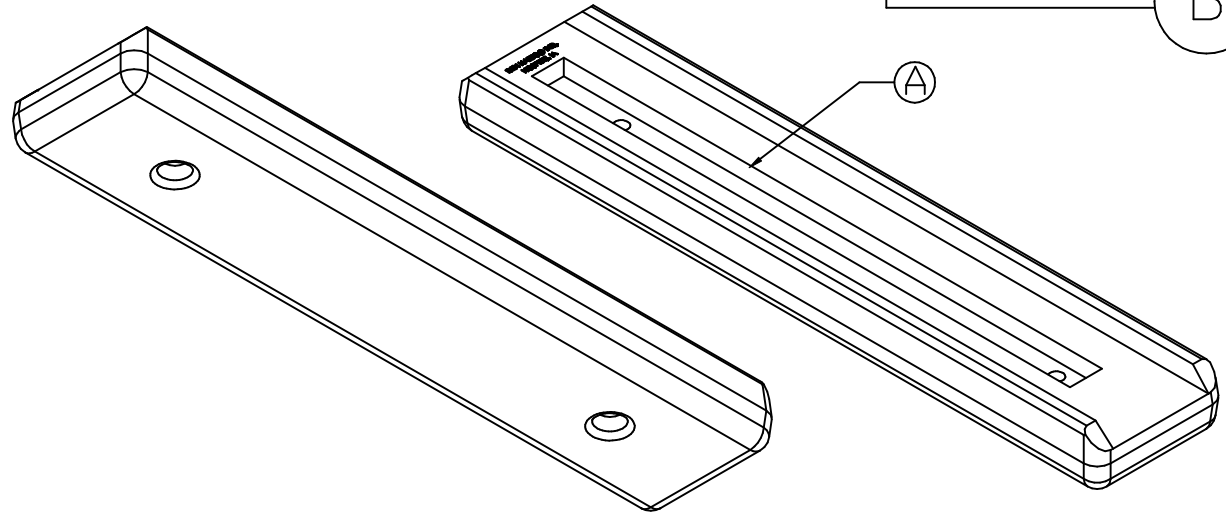
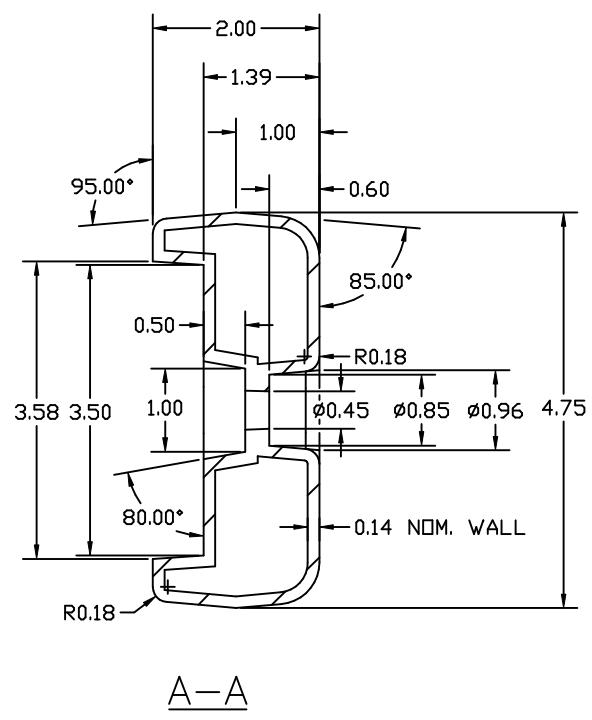


Copyright. All information furnished within this document, electronic file or design correspondence is the property of Den Hartog Industries, Inc. and shall not be used, disclosed to others or copied without the expressed written consent of Den Hartog Industries, Inc.



ALL RADII 0.50 UNLESS SPECIFIED

B	MATERIALS IDENTIFIED, DRAWING TEMPLATE UPDATED	ADH 9/14/09	1931	DRAWN / DATE NVE 5/25/06	MATERIAL ⑧ 80007=80% 80001=20%
A	FASTENER RECESS ADDED	NVE 7/19/06		APPRD. / DATE ADH 11/8/07	
REV	DESCRIPTION	BY / DATE	CCN	SHOT WEIGHT: 1.67 LBS.	NOTES: 1.) NOM. WALL @ .140 2.) COMPOUNDED U.V. INHIBITOR 3.) BLACK OR WHITE COLOR
ALL DIMENSIONS ARE IN DECIMAL INCHES TOLERANCES UNLESS OTHERWISE SPECIFIED				SHIPPING WEIGHT:	
POLYETHYLENE ±1% @ 68° F		THIRD ANGLE PROJECTION ANSI 14.5M		FINISH:	
METAL DECIMAL ± .125" FRACTION ± 1/4" ANGLE ± 1°					



Den Hartog
INDUSTRIES, INC.

Ace Roto-Mold Injection Molding Blow Molding Sowjoy
4010 HOSPERS DRIVE S. BOX 425, HOSPERS, IOWA 51238-0425

DESCRIPTION	BLOW-MOLDED 3.5" GROOVE BACK CUSHION - 2 FEET LONG	
SCALE	N.S.	PART NO. DCBM2-3.50