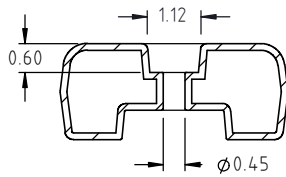


© DEN HARTOG INDUSTRIES, INC.

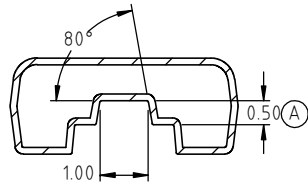
Copyright. All information furnished within this document, electronic file or design correspondence is the property of Den Hartog industries, Inc. and shall not be used, disclosed to others or copied without the expressed written consent of Den Hartog Industries, Inc.

DCBM3-2.00

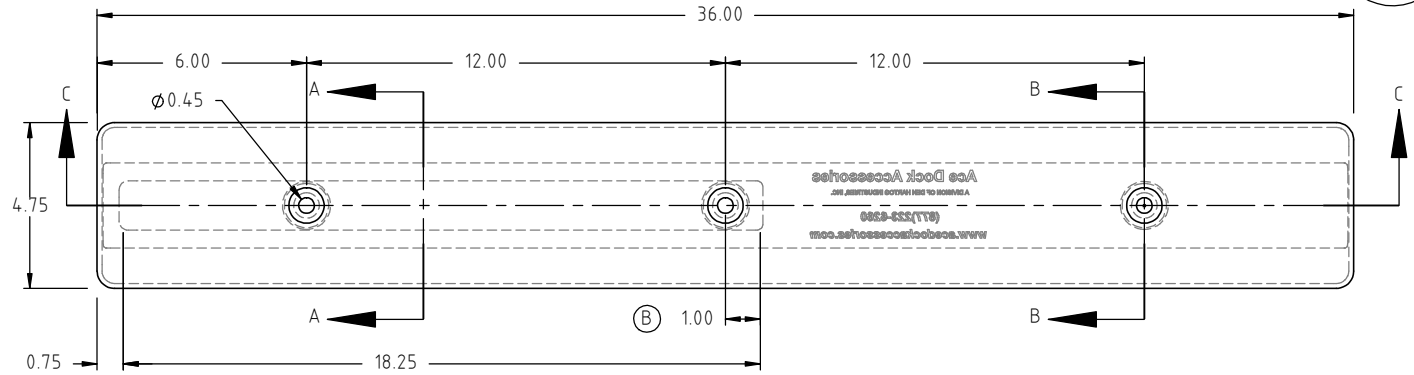
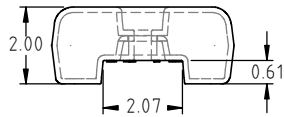
D



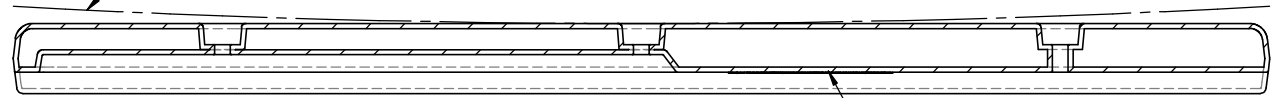
SECTION A-A
SCALE 1: 4



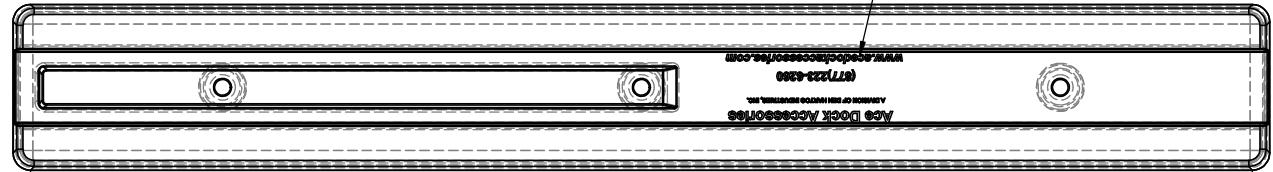
SECTION B-B
SCALE 1: 4



FLATNESS OF FRONT OR BACK SURFACES TO BE WITHIN 0.50"



SECTION C-C
SCALE 1: 5.5



BACK VIEW

D	MOLDED IN LOGO REDESIGNED AND RELOCATED.	ADH 4/15/14	2834
C	MATERIALS IDENTIFIED, DRAWING TEMPLATE UPDATED	ADH 9/15/09	1931
B	PN WAS DCBM-7, DIM WAS 0.75	NVE 7/18/06	
A	FASTENER RECESS ADDED	12/29/03	
REV	DESCRIPTION	BY / DATE	CCN

DRAWN / DATE	MATERIAL
REH /2/3/03	LT5704
APPRD. / DATE	Ⓒ 80007=80% 80001=20%
REH /2/3/03	



Den Hartog
INDUSTRIES, INC.

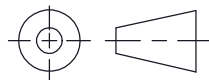
Ace Roto-Mold Injection Molding Blow Molding Sowjoy

4010 HOSPERS DRIVE S. BOX 425, HOSPERS, IOWA 51238-0425

ALL DIMENSIONS ARE IN DECIMAL INCHES
TOLERANCES UNLESS OTHERWISE SPECIFIED

POLYETHYLENE	METAL DECIMAL ± .125" FRACTION ± 1/4" ANGLE ± 1°
±1% @ 68°F	

THIRD ANGLE PROJECTION
ANSI 14.5M



SHOT WEIGHT:	2.0 LBS
SHIPPING WEIGHT:	
FINISH:	

NOTES:
1.) NOM. WALL @ .140
2.) BLACK OR WHITE COLOR
3.) COMPOUNDED U.V. INHIBITOR

DESCRIPTION	BLOW-MOLDED 2" GROOVE BACK CUSHION-3 FEET LONG	
SCALE	N.S.	PART NO. DCBM3-2.00